

(GLADZ4.GLADZ) 24305

AL-256 (FAA)

MIAMI-OPA LOCKA EXEC (OPF)
MIAMI, FLORIDA

GLADZ FOUR DEPARTURE (RNAV)

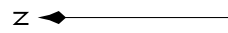
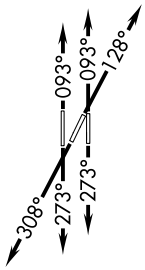
SE-3, 26 DEC 2024 to 23 JAN 2025

RNAV-1 DME/DME/IRU or GPS.
 RADAR required for NON-GPS equipped aircraft.
 RADAR required.

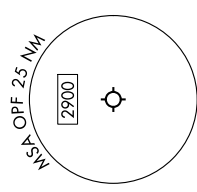
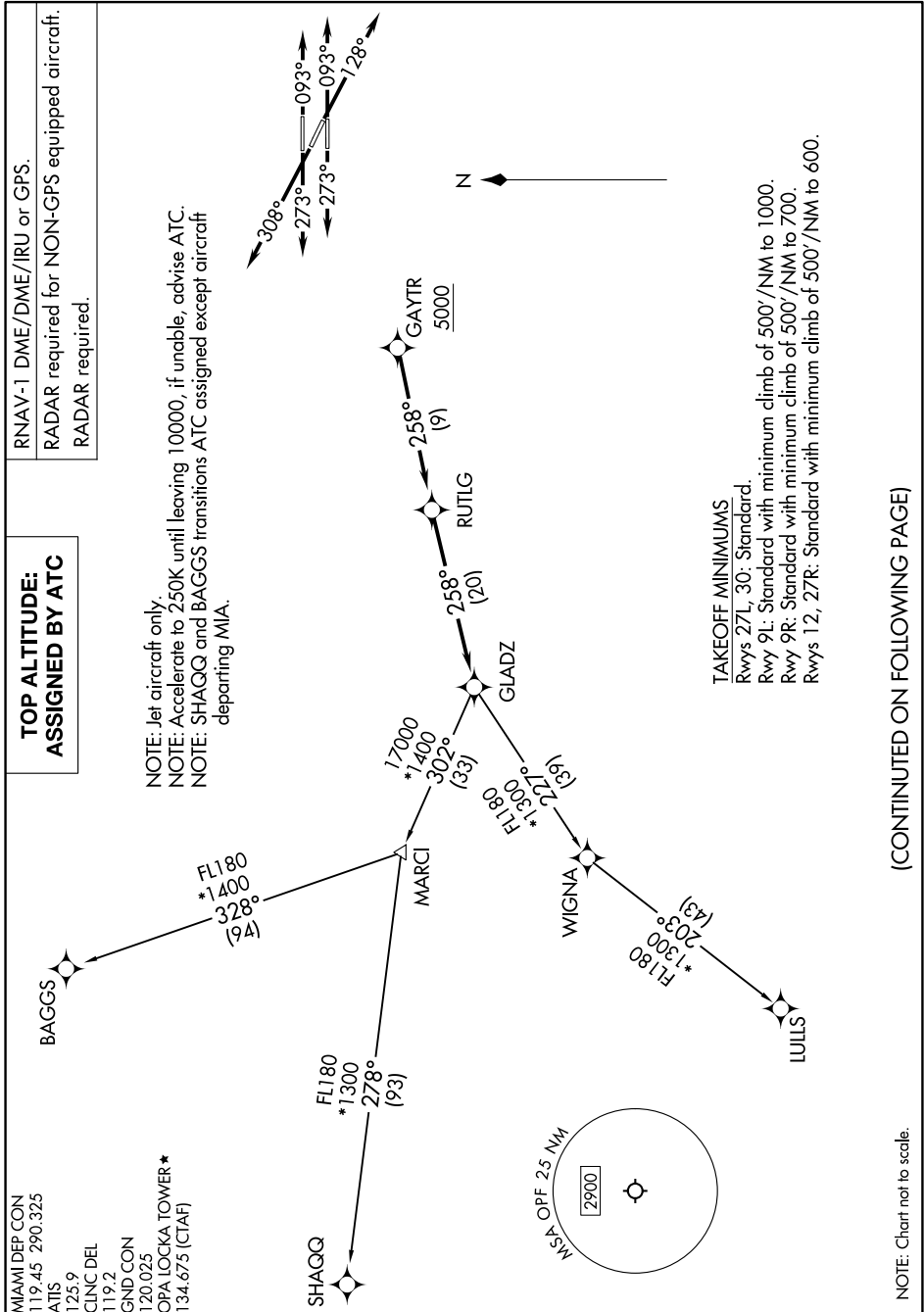
TOP ALTITUDE: ASSIGNED BY ATC

MIAMI DEP CON
119.45 290.325
 ATIS
125.9
 CLNC DEL
119.2
 GND CON
120.025
 OPA LOCKA TOWER *
134.675 (CTAF)

NOTE: Jet aircraft only.
 NOTE: Accelerate to 250K until leaving 10000, if unable, advise ATC.
 NOTE: SHAGQ and BAGGS transitions ATC assigned except aircraft departing MIA.



TAKEOFF MINIMUMS
 Rwy 27L, 30: Standard
 Rwy 9L: Standard with minimum climb of 500'/NM to 1000.
 Rwy 9R: Standard with minimum climb of 500'/NM to 700.
 Rwy 12, 27R: Standard with minimum climb of 500'/NM to 600.



(CONTINUED ON FOLLOWING PAGE)

NOTE: Chart not to scale.

SE-3, 26 DEC 2024 to 23 JAN 2025

GLADZ FOUR DEPARTURE (RNAV)
(GLADZ4.GLADZ) 31OCT24

MIAMI, FLORIDA
MIAMI-OPA LOCKA EXEC (OPF)