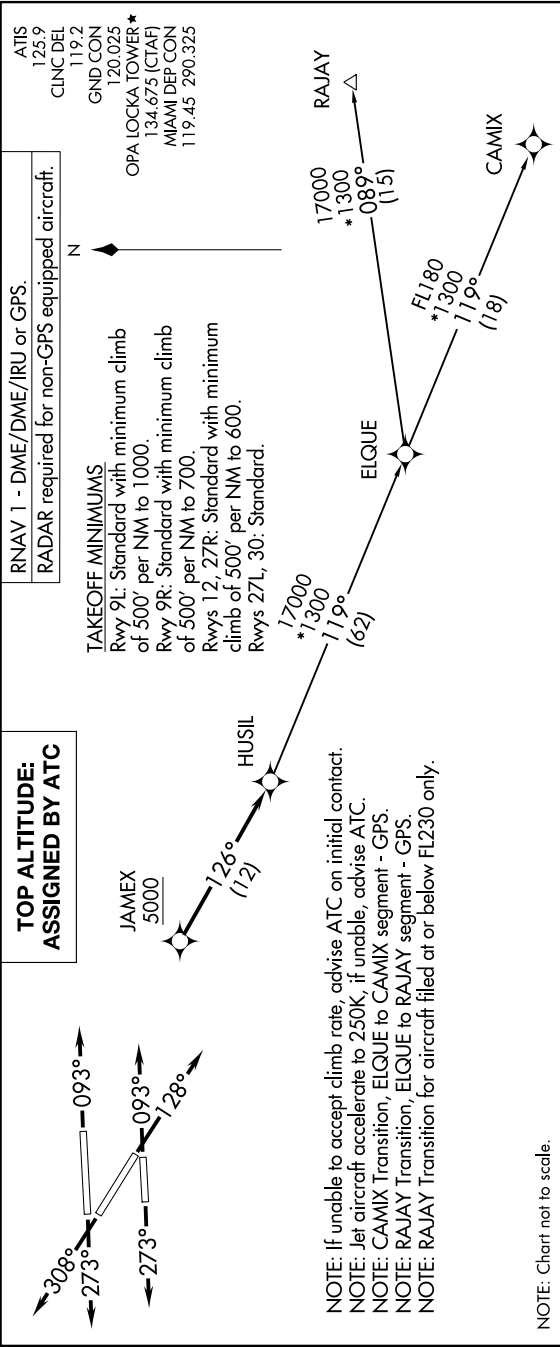


HUSIL THREE DEPARTURE(RNAV)

SE-3, 26 DEC 2024 to 23 JAN 2025



DEPARTURE ROUTE DESCRIPTION

TAKEOFF RUNWAYS 9L/R: Climb on heading 093° or as assigned by ATC for RADAR vectors to cross JAMEX at or above 5000, thence...

TAKEOFF RUNWAY 12: Climb on heading 128° or as assigned by ATC for RADAR vectors to cross JAMEX at or above 5000, thence...

TAKEOFF RUNWAYS 27L/R: Climb on heading 273° or as assigned by ATC for RADAR vectors to cross JAMEX at or above 5000, thence...

TAKEOFF RUNWAY 30: Climb on heading 308° or as assigned by ATC for RADAR vectors to cross JAMEX at or above 5000, thence... on track 126° to HUSIL. Then on assigned transition. Maintain ATC assigned altitude, expect clearance to filed altitude within 10 minutes after departure.

CAMIX TRANSITION (HUSIL3.CAMIX)
RAJAY TRANSITION (HUSIL3.RAJAY)

NOTE: Chart not to scale.

SE-3, 26 DEC 2024 to 23 JAN 2025

HUSIL THREE DEPARTURE (RNAV)

(HUSIL3.HUSIL) 19MAY22