

MAYNR THREE DEPARTURE (RNAV)

**TOP ALTITUDE:
ASSIGNED BY ATC**



RNAV 1 - DME/DME/IRU or GPS.
From SLIPT to MAXIM: RNAV 1 - GPS.
From SLIPT to CANOA: RNAV 1 - GPS.

RADAR required for non-GPS equipped aircraft.
RADAR required.

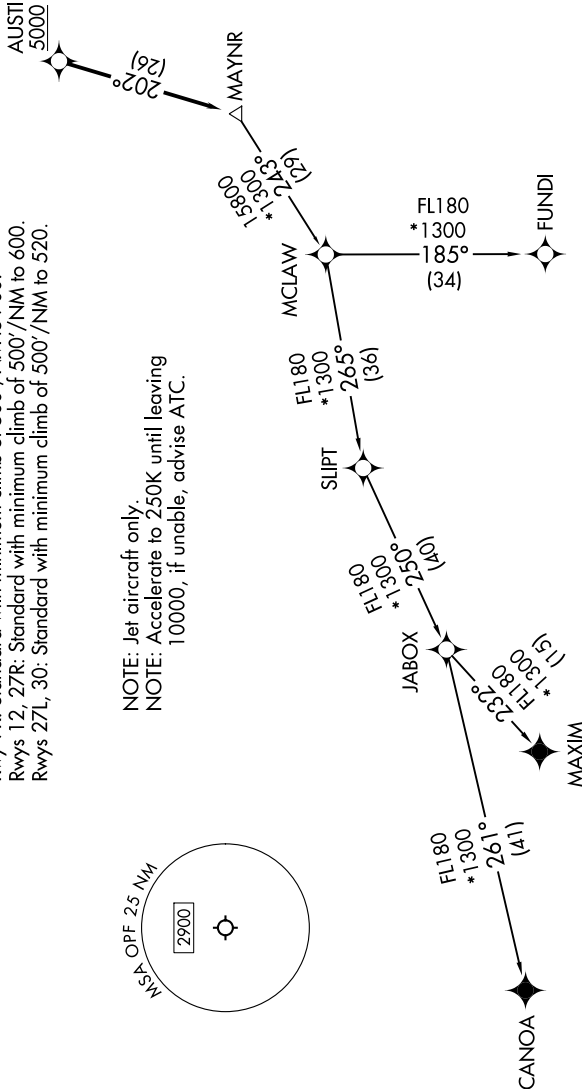
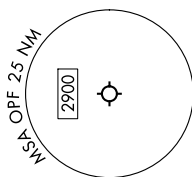
SE-3, 26 DEC 2024 to 23 JAN 2025

MIAMI DEP CON
119.45 290.325
ATIS
125.9
CLNC DEL
119.2
GND CON
120.025
OPA LOCKA TOWER *
134.675 (CTAF)

TAKEOFF MINIMUMS

Rwy 9L: Standard with minimum climb of 500'/NM to 1000.
Rwy 9R: Standard with minimum climb of 500'/NM to 700.
Rwys 12, 27R: Standard with minimum climb of 500'/NM to 600.
Rwys 27L, 30: Standard with minimum climb of 500'/NM to 520.

NOTE: Jet aircraft only.
NOTE: Accelerate to 250K until leaving
10000, if unable, advise ATC.



NOTE: Chart not to scale.

(CONTINUED ON FOLLOWING PAGE)

SE-3, 26 DEC 2024 to 23 JAN 2025

MAYNR THREE DEPARTURE (RNAV)

(MAYNR3.MAYNR) 31OCT24