

(CSTAL.CSTAL2) 23222

AL-257 (FAA)

CSTAL TWO ARRIVAL (RNAV) Arrival Routes

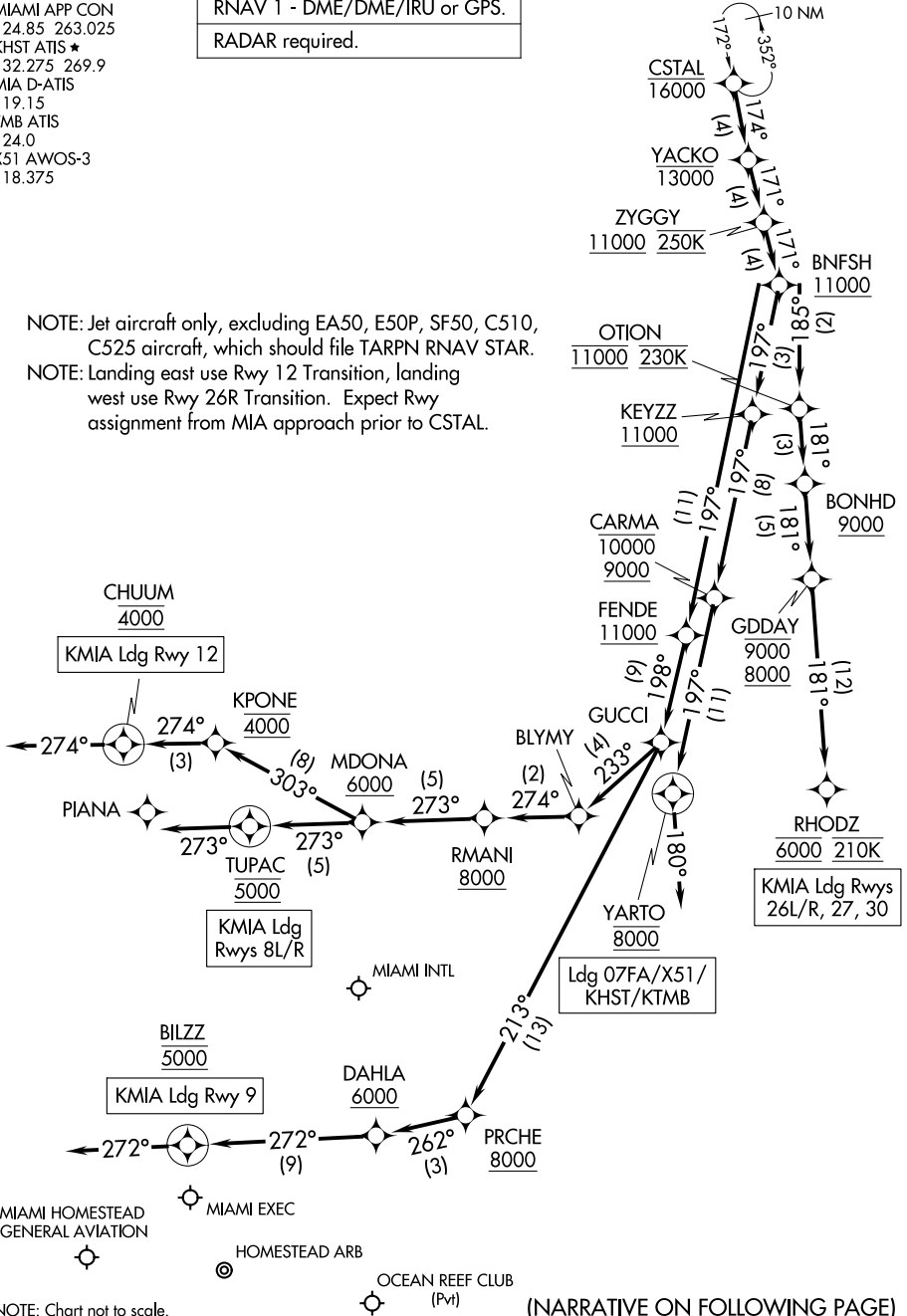
MIAMI, FLORIDA

MIAMI APP CON
 124.85 263.025
 KHST ATIS ★
 132.275 269.9
 MIA D-ATIS
 119.15
 TMB ATIS
 124.0
 X51 AWOS-3
 118.375

RNAV 1 - DME/DME/IRU or GPS.
RADAR required.

NOTE: Jet aircraft only, excluding EA50, E50P, SF50, C510, C525 aircraft, which should file TARPEN RNAV STAR.

NOTE: Landing east use Rwy 12 Transition, landing west use Rwy 26R Transition. Expect Rwy assignment from MIA approach prior to CSTAL.



NOTE: Chart not to scale.

(NARRATIVE ON FOLLOWING PAGE)

SE-3, 26 DEC 2024 to 23 JAN 2025

SE-3, 26 DEC 2024 to 23 JAN 2025

CSTAL TWO ARRIVAL (RNAV) Arrival Routes

MIAMI, FLORIDA

(CSTAL.CSTAL2) 19MAY22