

# GLADZ FOUR DEPARTURE (RNAV) Transition Routes

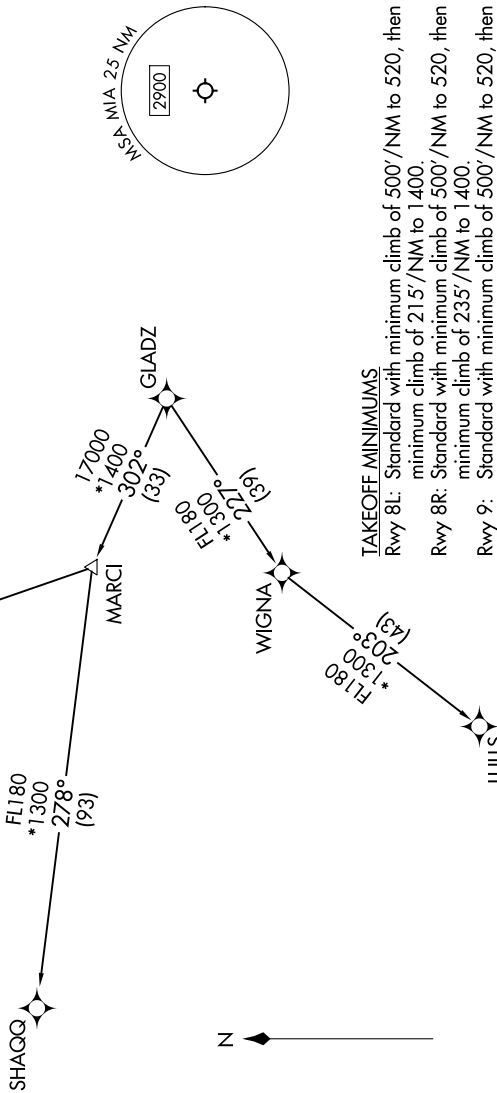
SE-3, 26 DEC 2024 to 23 JAN 2025

**TOP ALTITUDE:**  
**5000**

RNAV-1 DME/DME/IRU or GPS.  
RADAR required for NON-GPS equipped aircraft.  
RADAR required.

MIAMI DEP CON  
119.45 290.325 (Departing East)  
125.5 354.1 (Departing West)  
D-ATIS  
133.675  
CLNC DEL  
135.35  
CPDLC  
GND CON  
(Rvys 8L/R, 12, 26L/R) 121.8 348.6  
(Rvys 9, 27, 30) 127.5 348.6  
MIAMI TOWER  
118.3 256.9

NOTE: Jet aircraft only.  
NOTE: Accelerate to 250K until leaving 10000, if unable, advise ATC.  
NOTE: SHAGG and BAGGS transitions ATC assigned except aircraft departing MIA.



**TAKEOFF MINIMUMS**  
Rwy 8L: Standard with minimum climb of 500'/NM to 520, then minimum climb of 215'/NM to 1400.  
Rwy 8R: Standard with minimum climb of 500'/NM to 520, then minimum climb of 235'/NM to 1400.  
Rwy 9: Standard with minimum climb of 500'/NM to 520, then minimum climb of 240'/NM to 1400.  
Rwy 12: Standard with minimum climb of 500'/NM to 520, then minimum climb of 230'/NM to 1400.  
Rvys 26L/R, 27, 30: Standard with minimum climb of 500'/NM to 520.

(CONTINUED ON FOLLOWING PAGE)

NOTE: Chart not to scale.

SE-3, 26 DEC 2024 to 23 JAN 2025