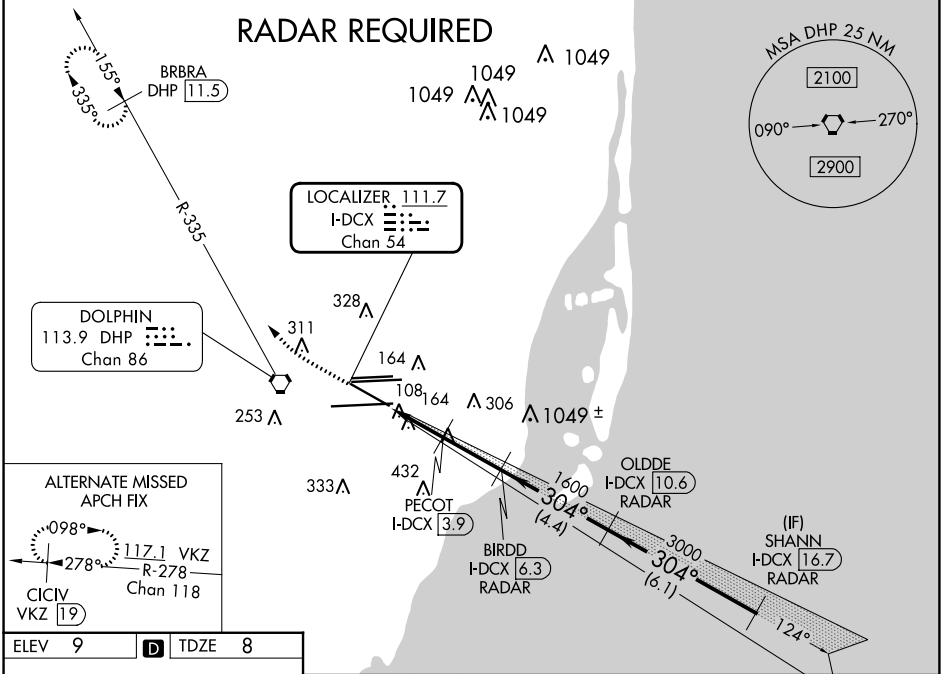


LOC/DME I-DCX 111.7 Chan 54	APP CRS 304°	Rwy Idg TDZE Apt Elev	7913 8 9
---	------------------------	-----------------------------	-------------------------------------

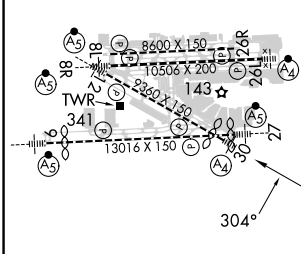
ILS or LOC RWY 30

MIAMI INTL (MIA)

D-ATIS ARR 119.15 DEP 133.675	MIAMI APP CON 124.85 322.3	MIAMI TOWER 118.3 256.9	GND CON 121.8 (8L/8R/12/26L/26R) 127.5 (9/27/30)	MALS 	MISSED APPROACH: Climb to 800 then climbing right turn to 2000 on heading 310° and DHP VORTAC R-335 to BRBRA/11.5 DME and hold.	CLNC DEL 135.35	CPDLC



ELEV 9	D	TDZE 8
--------	----------	--------



800	2000	DHP R-335	BRBRA DHP 11.5	VGSI and ILS glidepath not coincident (VGSI Angle 3.00/TCH 71).
*LOC only.				
I-DCX 1.5	*I-DCX 2.7	PECOT I-DCX 3.9	BIRDD I-DCX 6.3	OLDDE I-DCX 10.6
304°		304°		3000
1600		1600		GS 3.00° TCH 51
-1.2 NM	-1.2 NM	-2.4 NM	4.4 NM	6.1 NM
CATEGORY	A		B	C
S-ILS 30	258/40		250 (300-¾)	
S-LOC 30	460/40	452 (500-¾)	460/60	460-1½
			452 (500-1¼)	452 (500-1½)

SE-3, 26 DEC 2024 to 23 JAN 2025

SE-3, 26 DEC 2024 to 23 JAN 2025