

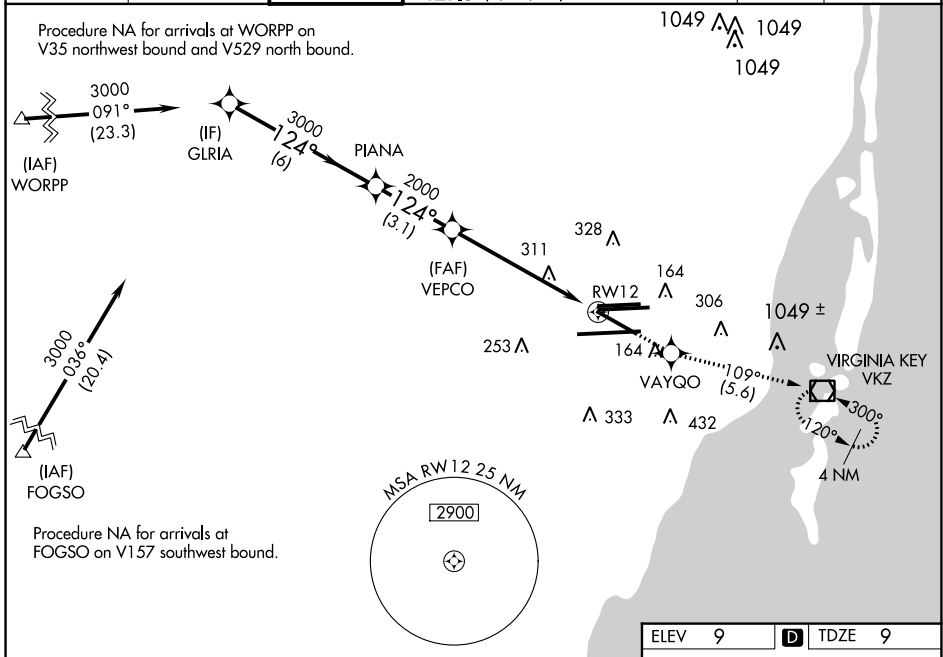
WAAS CH <b>61204</b> <b>W12A</b>	APP CRS <b>124°</b>	Rwy Idg TDZE Apt Elev	<b>8579</b> <b>9</b> <b>9</b>
----------------------------------------	------------------------	-----------------------------	-------------------------------------

# RNAV (GPS) Z RWY 12

MIAMI INTL (MIA)

RNP APCH - GPS.		MALSR	MISSED APPROACH: Climb to 3000 direct VAYGO and on 109° track to VKZ VOR/DME and hold, continue climb-in-hold to 3000.
<p>▼ Rwy 12 helicopter visibility reduction below 3/4 SM NA. For uncompensated Baro-VNAV systems, LNAV/VNAV NA below 9°C or above 54°C. For inop ALS, increase LPV all Cats visibility to RVR 6000, LNAV/VNAV all Cats to 1 3/8 and LNAV Cat A/B to 5500.</p>			

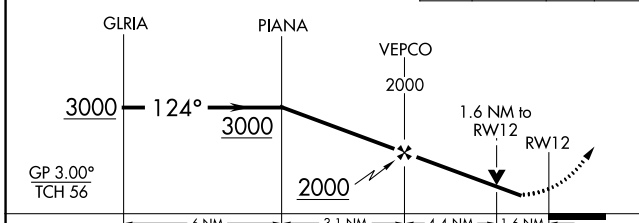
D-ATIS ARR <b>119.15</b> DEP <b>133.675</b>	MIAMI APP CON <b>124.85 322.3</b>	MIAMI TOWER <b>118.3 256.9</b>	GND CON <b>121.8 (8L/8R/12/26L/26R)</b> <b>127.5 (9/27/30)</b>	<b>348.6</b>	CLNC DEL <b>135.35</b>	CPDLC
---------------------------------------------------	--------------------------------------	-----------------------------------	----------------------------------------------------------------------	--------------	---------------------------	-------



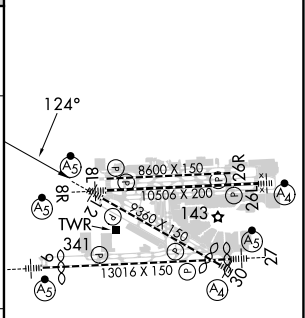
SE-3, 26 DEC 2024 to 23 JAN 2025

SE-3, 26 DEC 2024 to 23 JAN 2025

VGSI and RNAV glidepath not coincident (VGSI Angle 3.00/TCH 72).	3000	VAYGO	tr 109°	VKZ



ELEV 9	<b>D</b> TDZE 9
--------	-----------------



CATEGORY	A	B	C	D
LPV DA		391/40	382 (400-3/4)	
LNAV/VNAV DA		512/55	503 (600-1)	
LNAV MDA	600/40	591 (600-3/4)	600-1 1/4	591 (600-1 1/4)

TDZ/CL Rwy 8R  
REIL Rwys 8L and 26R  
HIRL all Rwys