

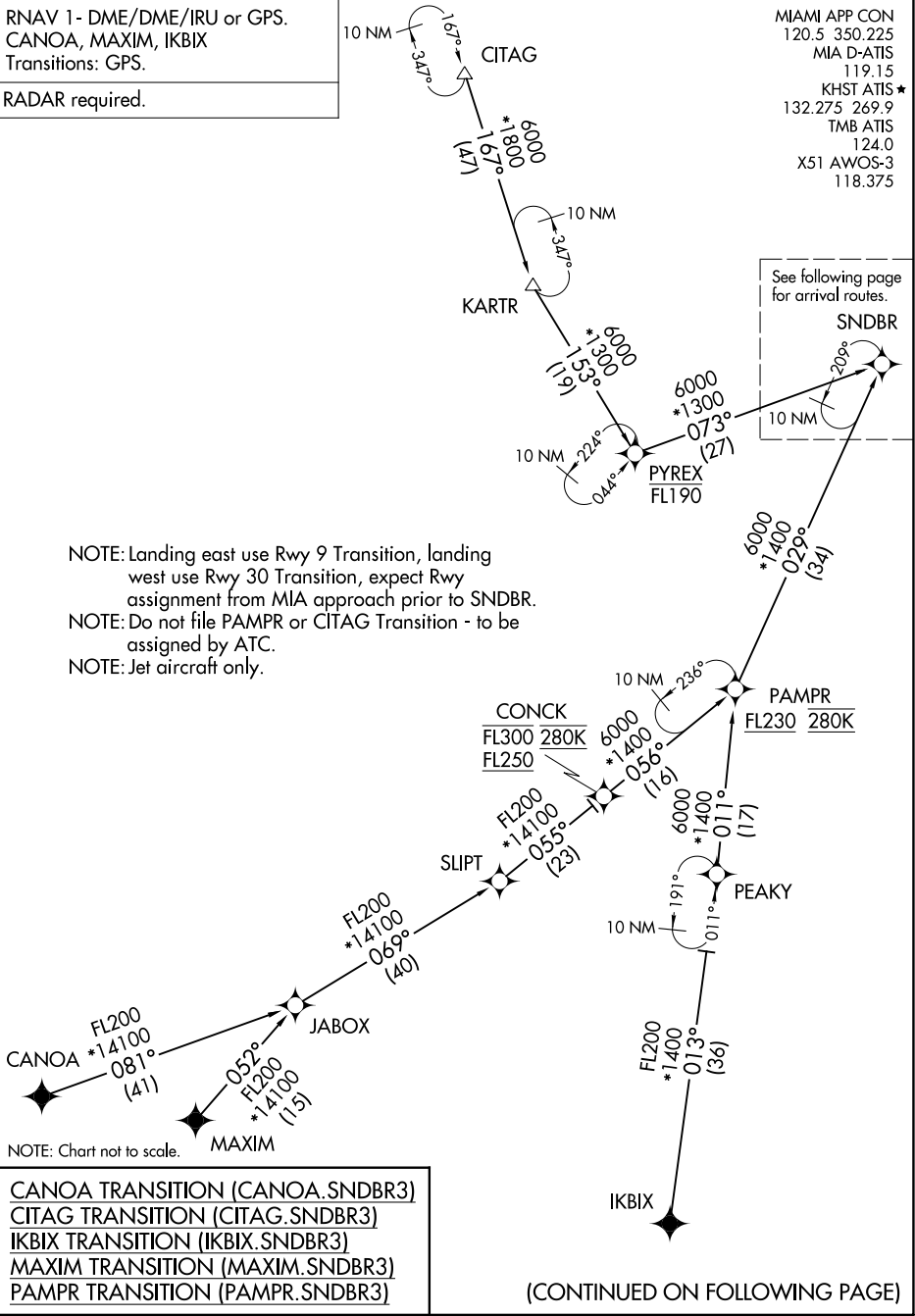
# SNDBR THREE ARRIVAL (RNAV) Transition Routes

MIAMI, FLORIDA

RNAV 1 - DME/DME/IRU or GPS.  
CANOA, MAXIM, IKBIX  
Transitions: GPS.

RADAR required.

MIAMI APP CON  
120.5 350.225  
MIA D-ATIS  
119.15  
KHST ATIS \*  
132.275 269.9  
TMB ATIS  
124.0  
X51 AWOS-3  
118.375



NOTE: Landing east use Rwy 9 Transition, landing west use Rwy 30 Transition, expect Rwy assignment from MIA approach prior to SNDBR.  
 NOTE: Do not file PAMPR or CITAG Transition - to be assigned by ATC.  
 NOTE: Jet aircraft only.

NOTE: Chart not to scale.

- CANOA TRANSITION (CANOA.SNDBR3)
- CITAG TRANSITION (CITAG.SNDBR3)
- IKBIX TRANSITION (IKBIX.SNDBR3)
- MAXIM TRANSITION (MAXIM.SNDBR3)
- PAMPR TRANSITION (PAMPR.SNDBR3)

(CONTINUED ON FOLLOWING PAGE)

SE-3, 26 DEC 2024 to 23 JAN 2025

SE-3, 26 DEC 2024 to 23 JAN 2025