

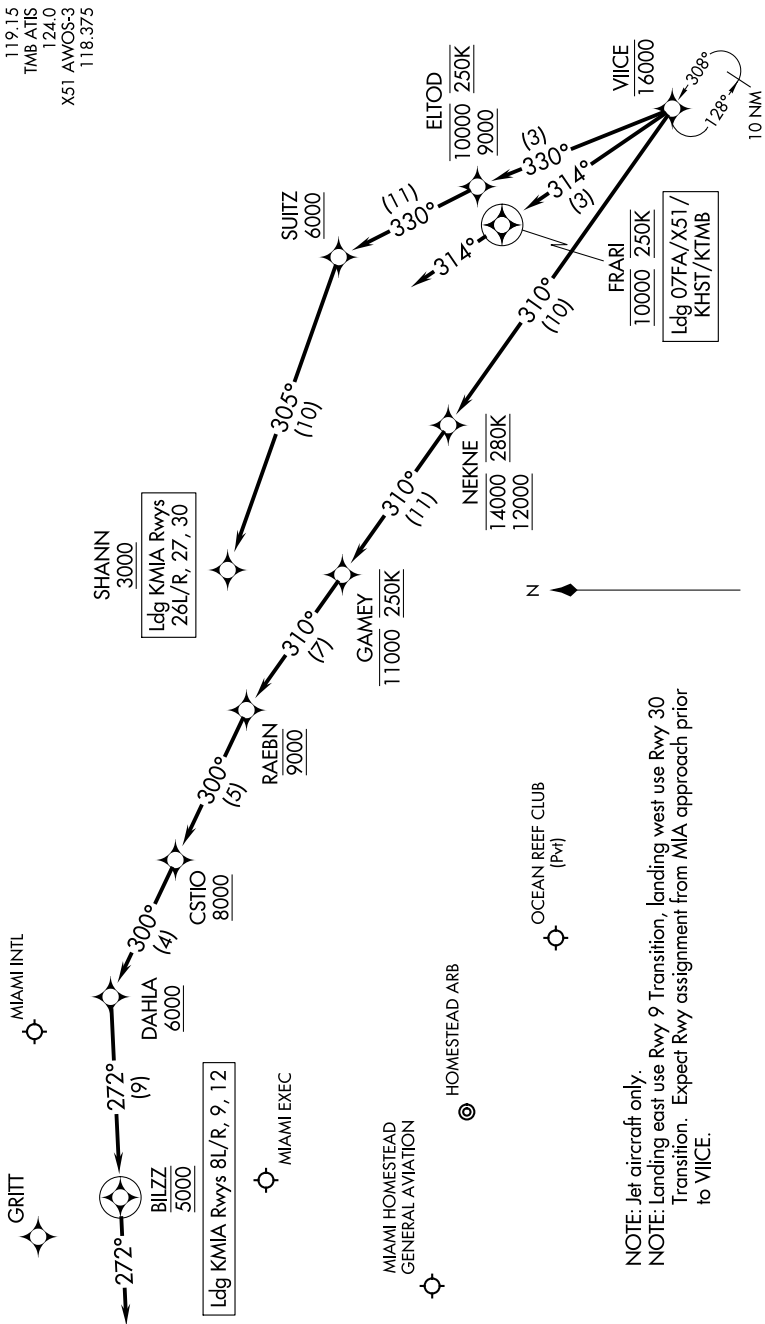
VIICE TWO ARRIVAL (RNAV) Arrival Routes

MIAMI, FLORIDA

MIAMI APP CON
 120.5 350.225
 KHST ATIS ★
 132.275 269.9
 MIA D-ATIS
 119.15
 TMB ATIS
 124.0
 X51 AWOS-3
 118.375

SE-3, 26 DEC 2024 to 23 JAN 2025

RNAV 1 - DME/DME/IRU or GPS.
 RADAR required.



NOTE: Jet aircraft only.
 NOTE: Landing east use Rwy 9 Transition, landing west use Rwy 30 Transition. Expect Rwy assignment from MIA approach prior to VIICE.

(NARRATIVE ON FOLLOWING PAGE)

NOTE: Chart not to scale.

VIICE TWO ARRIVAL (RNAV) Arrival Routes

MIAMI, FLORIDA

SE-3, 26 DEC 2024 to 23 JAN 2025