

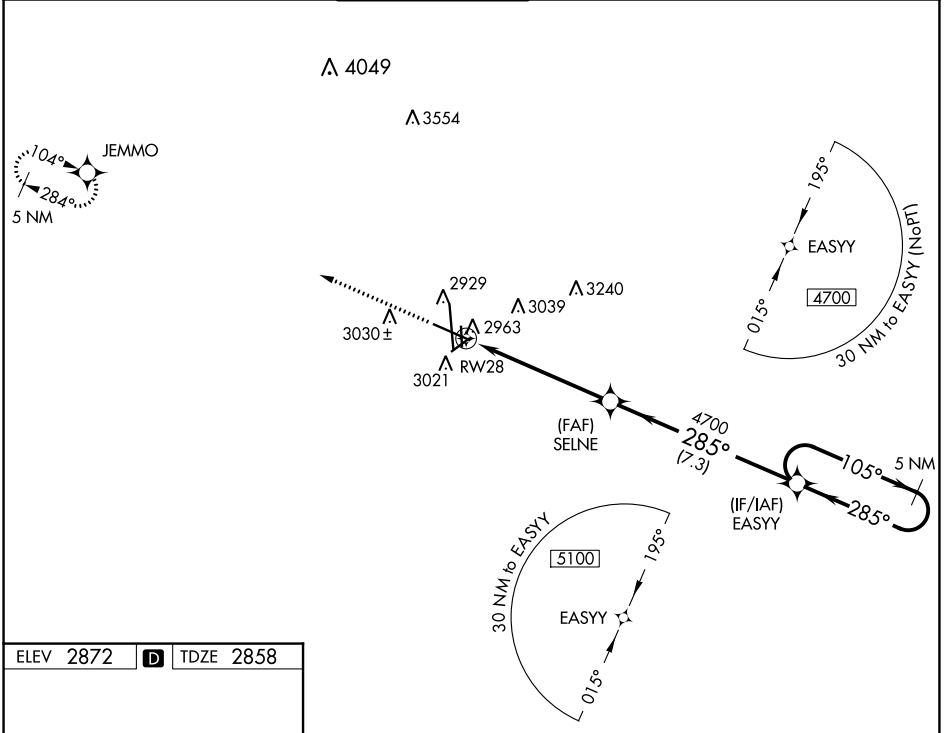
WAAS CH <b>81816</b> <b>W28A</b>	APP CRS <b>285°</b>	Rwy Idg TDZE Apt Elev	<b>7610</b> <b>2858</b> <b>2872</b>
--	------------------------	-----------------------------	---

# RNAV (GPS) RWY 28

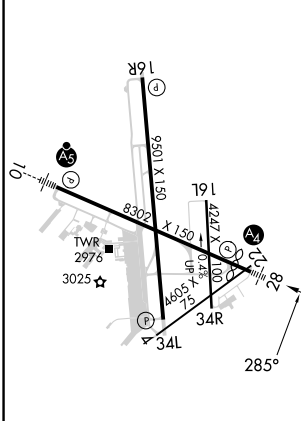
MIDLAND INTL AIR AND SPACE PORT (M.A.F)

<p>▼ For uncompensated Baro-VNAV systems, LNAV/VNAV NA below -11°C (13°F) or above 25°C (77°F). Circling Rwy 16L NA at night. DME/DME RNP-0.3 NA. Inop table does not apply to LPV all Cats.</p>		<p>MALS</p>	<p>MISSED APPROACH: Climb to 5000 direct JEMMO and hold.</p>
--	--	-------------	--

ATIS <b>126.8 235.975</b>	MIDLAND APP CON * <b>124.6 290.4</b>	MIDLAND TOWER * <b>118.7 (CTAF) 0273.45</b>	GND CON <b>121.9 348.6</b>	CLNC DEL <b>118.05 317.65</b>	UNICOM <b>122.95</b>
------------------------------	---	--	-------------------------------	----------------------------------	-------------------------



ELEV 2872	<b>D</b>	TDZE 2858
-----------	----------	-----------



REIL Rwy 34L  
MIRL Rwy 4-22 and 16L-34R  
HIRL Rwy 10-28 and 16R-34L

<p>5000</p>	<p>5 NM Holding Pattern</p>			
*LNAV only	<p>*1.2 NM to RWY28</p>	<p>SELNE 4700</p>	<p>EASY 4700</p>	
	<p>1.2</p>	<p>4.4 NM</p>	<p>7.3 NM</p>	
<p>GP 3.00°</p> <p>TCH 53'</p>				
CATEGORY	A	B	C	D
LPV DA		3058-¾	200 (200-¾)	
LNAV/VNAV DA		3271-1½	413 (500-1½)	
LNAV MDA	3280-¾	422 (500-¾)	3280-1	422 (500-1)
CIRCLING	3440-1	568 (600-1)	3440-1½ 568 (600-1½)	3520-2 648 (700-2)