

VORTAC MLF 112.1 Chan 58	APP CRS 344°	Rwy Idg TDZE Apt Elev 5042	N/A N/A
--	------------------------	--	--------------------------

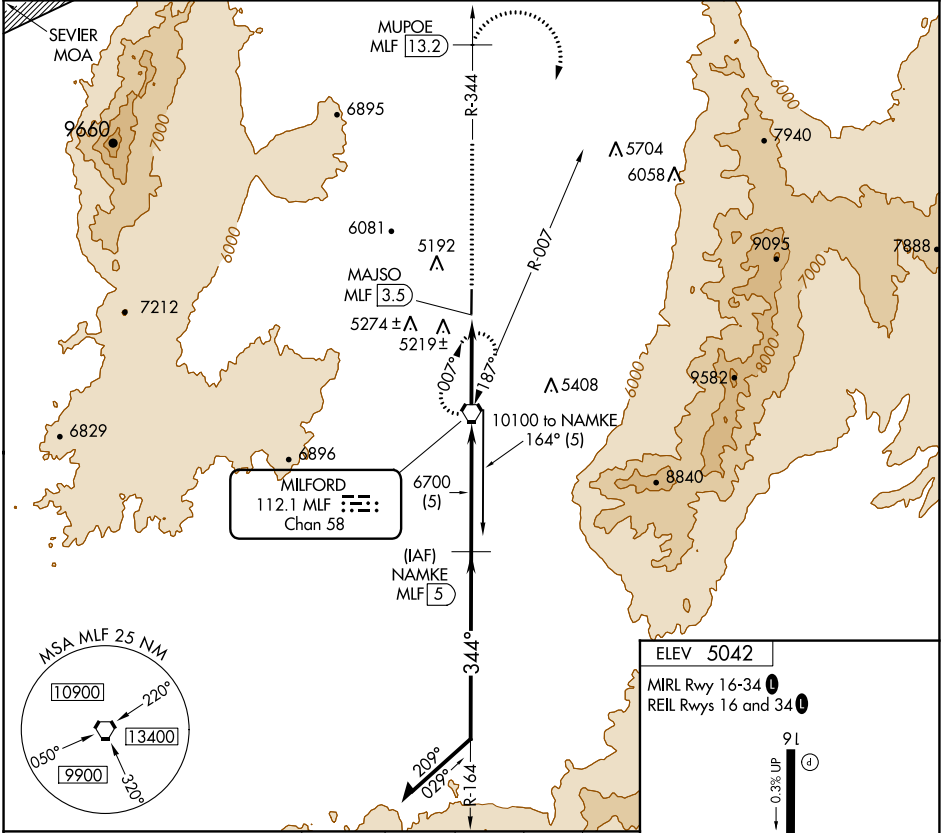
VOR/DME-A

MILFORD MUNI/BEN AND JUDY BRISCOE FLD (MLF)

⚠ When local altimeter setting not received, use Cedar City altimeter setting and increase all MDAs 180 feet, Circling Cat D NA. When VGSI inop, procedure NA at night. Visibility reduction by helicopters NA.

⚠ MISSED APPROACH: Climb on MLF VORTAC R-344 to MUPOE/MLF 13.2 DME then climbing right turn to 9600 on heading 150° and MLF VORTAC R-007 to MILFORD VORTAC and hold.

ASOS 135.025	SALT LAKE CENTER 125.575 379.275	UNICOM 122.8 (CTAF) 0
------------------------	--	---------------------------------



Remain within 10 NM	NAMKE MLF 5		MUPOE MLF 13.2	9600	MLF R-007	MLF
	9100	10100	MLF R-344	hdg 150°	MLF R-007	MLF
8100		MLF VORTAC		MAJISO MLF 3.5		
6700		4.28° TCH 42				
5 NM		3.5 NM				
CATEGORY	A	B	C	D		
CIRCLING	5660-1	618 (700-1)	6300-3 1258 (1300-3)	6540-3 1498 (1500-3)		

ELEV 5042

MIRL Rwy 16-34

REIL Rws 16 and 34

91

0.3% UP

5004 X 7.5

34

344°

SW-4, 26 DEC 2024 to 23 JAN 2025

SW-4, 26 DEC 2024 to 23 JAN 2025