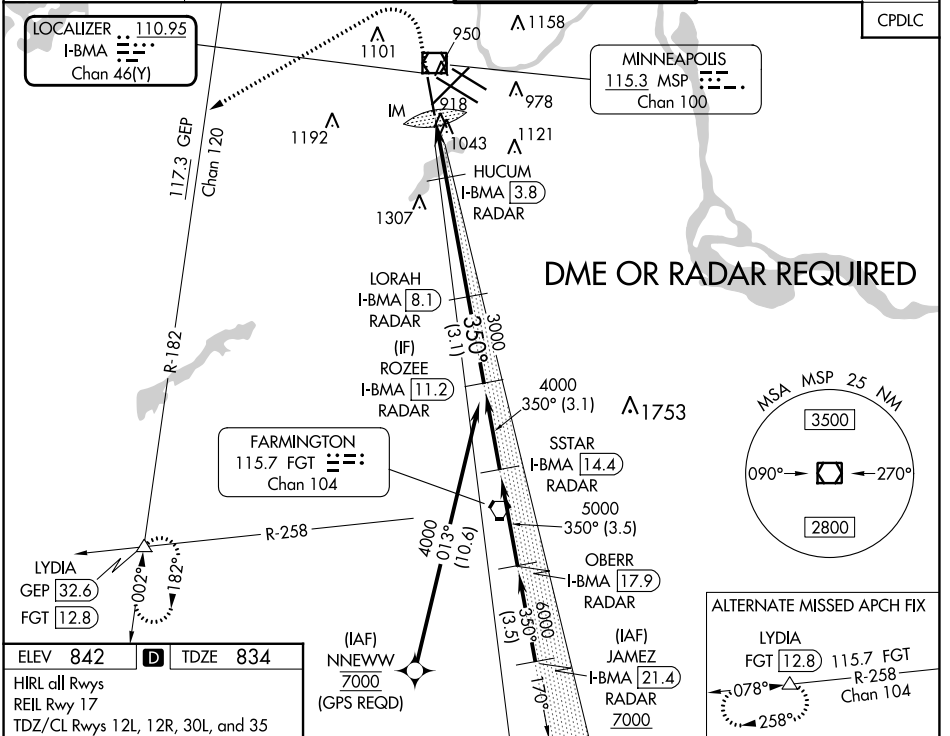


LOC/DME I-BMA <b>110.95</b> Chan 46 (Y)	APP CRS <b>350°</b>	Rwy ldg 8000 TDZE 834 Apt Elev 842
---	------------------------	---

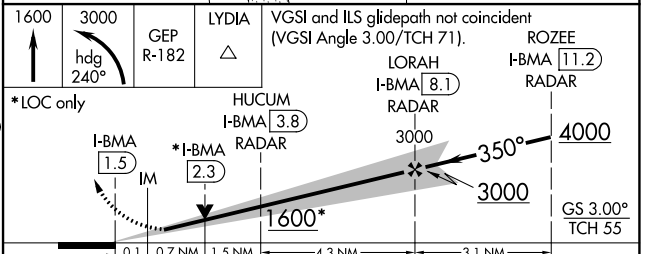
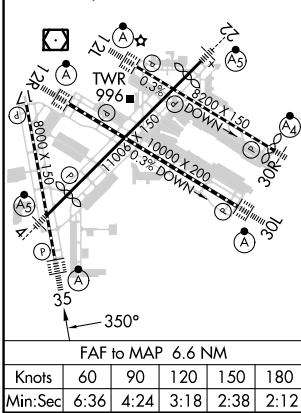
# ILS Z or LOC RWY 35

MINNEAPOLIS-ST PAUL INTL/WOLD-CHAMBERLAIN (MSP)

<b>▼</b> DME or RADAR required. For inop ALS, increase S-ILS 35 Cat E visibility to RVR 4000 and S-LOC 35 Cats C/D/E visibility to RVR 5500. <b>▲</b>	ALS F-2	MISSED APPROACH: Climb to 1600 then climbing left turn to 3000 on heading 240° and on GEP VORTAC R-182 to LYDIA INT/GEP 32.6 DME and hold.		
	ARR <b>135.35 239.275</b> DEP <b>120.8</b>	MINNEAPOLIS APP CON <b>118.725 335.65</b> (Rwy 35) <b>119.3 335.65</b> (12L-30R, 4-22, 17) <b>126.95 335.65</b> (12R-30L)	MINNEAPOLIS TOWER <b>123.675 273.55</b> (17-35) <b>123.95 273.55</b> (12L-30R) <b>126.7 273.55</b> (12R-30L, 4-22)	GND CON <b>N 121.8 348.6</b> <b>S 121.9 348.6</b> <b>W 127.925 348.6</b>



ELEV 842	<b>D</b>	TDZE 834
HIRL all Rwy's REL Rwy 17 TDZ/CL Rwy's 12L, 12R, 30L, and 35		



CATEGORY	A	B	C	D	E
S-ILS 35	1034/18 200 (200-½)				
S-LOC 35	1180/24	346 (400-½)	1180/30 346 (400-¾)		
<b>C</b> CIRCLING	1360-1	518 (600-1)	1460-1¾ 618 (700-1¾)	1660-2¾ 818 (900-2¾)	1800-3 958 (1000-3)

NC-1, 26 DEC 2024 to 23 JAN 2025

NC-1, 26 DEC 2024 to 23 JAN 2025