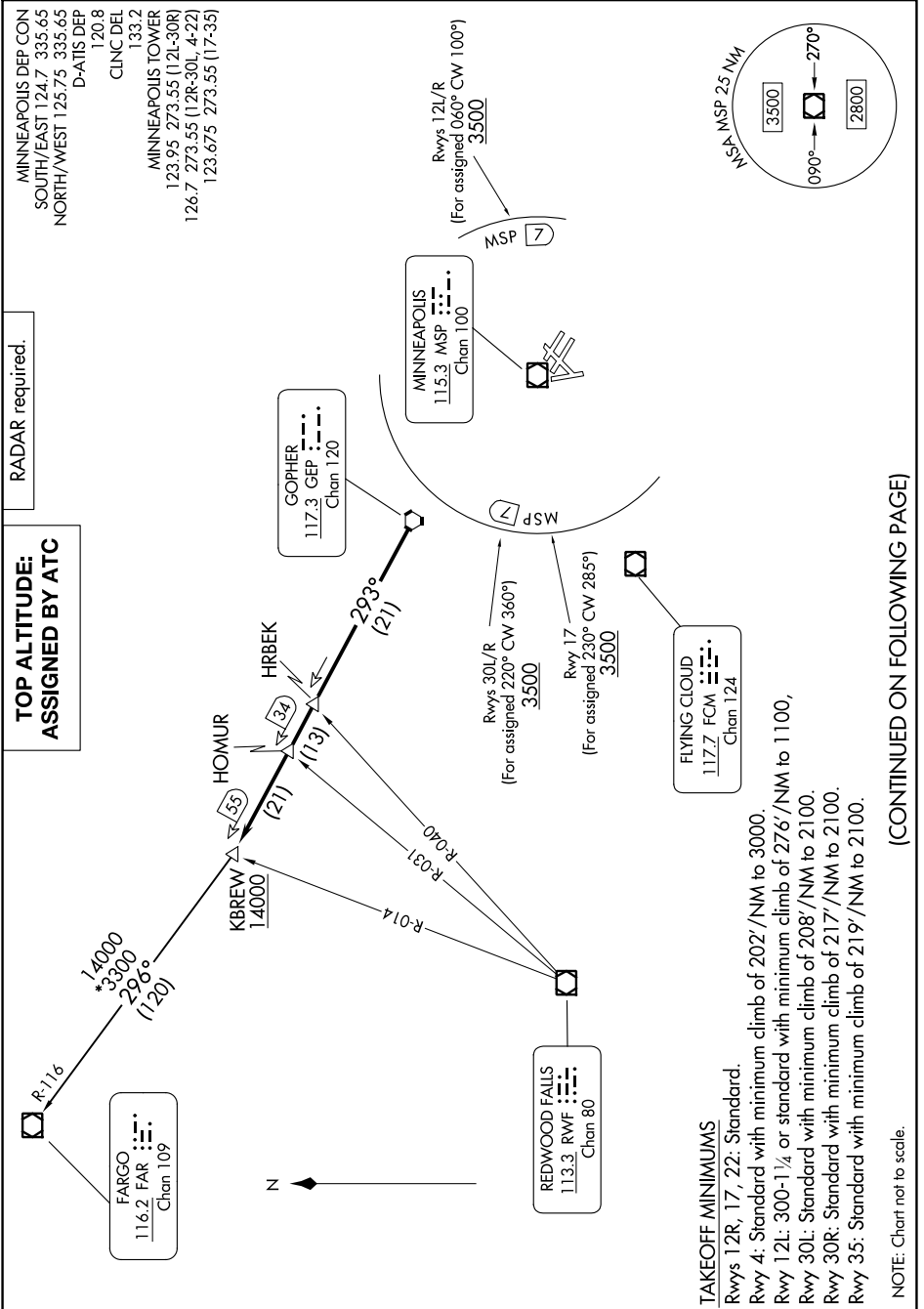


(KBREW2.KBREW) 24137  
**KBREW TWO DEPARTURE**

MINNEAPOLIS-ST PAUL INTL/WOLD-CHAMBERLAIN (MSP)  
 AL-264 (FAA) MINNEAPOLIS, MINNESOTA

NC-1, 26 DEC 2024 to 23 JAN 2025



**TOP ALTITUDE:  
 ASSIGNED BY ATC**

RADAR required.

MINNEAPOLIS DEP CON  
 SOUTH/EAST 124.7 335.65  
 NORTH/WEST 125.75 335.65  
 D-ATIS DEP  
 120.8  
 CLNC DEL  
 133.2  
 MINNEAPOLIS TOWER  
 123.95 273.55 (12L-30R)  
 126.7 273.55 (12R-30L, 4-22)  
 123.675 273.55 (17-35)

**TAKEOFF MINIMUMS**  
 Rwy 12R, 17, 22: Standard.  
 Rwy 4: Standard with minimum climb of 202'/NM to 3000.  
 Rwy 12L: 300-1/4 or standard with minimum climb of 276'/NM to 1100,  
 Rwy 30L: Standard with minimum climb of 208'/NM to 2100.  
 Rwy 30R: Standard with minimum climb of 217'/NM to 2100.  
 Rwy 35: Standard with minimum climb of 219'/NM to 2100.

NOTE: Chart not to scale.

(CONTINUED ON FOLLOWING PAGE)

NC-1, 26 DEC 2024 to 23 JAN 2025

(KBREW2.KBREW) 16MAY24  
**KBREW TWO DEPARTURE**

MINNEAPOLIS, MINNESOTA  
 MINNEAPOLIS-ST PAUL INTL/WOLD-CHAMBERLAIN (MSP)