

(NITZR.NITZR3) 18032

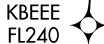
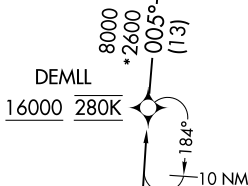
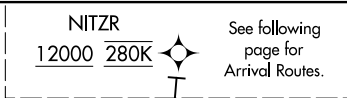
MINNEAPOLIS-ST PAUL INTL/WOLD-CHAMBERLAIN (MSP)

# NITZR THREE ARRIVAL (RNAV) Transition Routes

AL-264 (FAA)

MINNEAPOLIS, MINNESOTA

MINNEAPOLIS APP CON  
135.475 335.5  
D-ATIS ARR  
135.35 239.275



- NOTE: Expect "descend via" clearance and runway transition assignment by Center. Approach will assign landing Rwy.
- NOTE: Turbojet aircraft descend via Mach number until intercepting 280K. Maintain 280K until slowed by the STAR, or assigned by ATC.
- NOTE: DME/DME/IRU or GPS required.
- NOTE: For turbojet aircraft only.
- NOTE: RADAR required.
- NOTE: RNAV 1.

(CONTINUED ON FOLLOWING PAGE)

- DEMML TRANSITION (DEMML.NITZR3)
- ROKKK TRANSITION (ROKKK.NITZR3)
- RRAZZ TRANSITION (RRAZZ.NITZR3)

NOTE: Chart not to scale.

# NITZR THREE ARRIVAL (RNAV) Transition Routes

MINNEAPOLIS, MINNESOTA

(NITZR.NITZR3) 05JAN17

MINNEAPOLIS-ST PAUL INTL/WOLD-CHAMBERLAIN (MSP)

NC-1, 26 DEC 2024 to 23 JAN 2025

NC-1, 26 DEC 2024 to 23 JAN 2025