

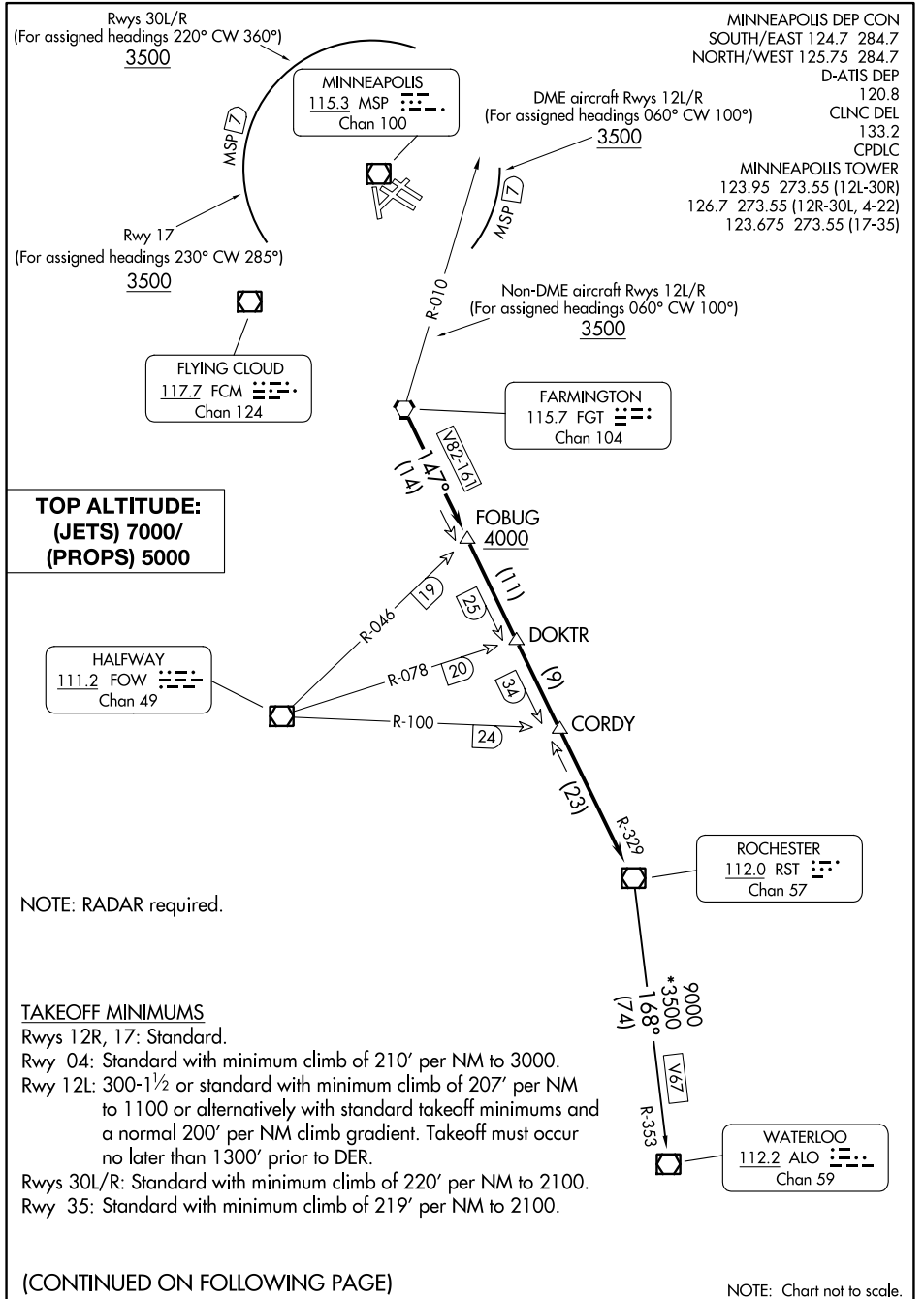
(RST1 .RST) 23334

MINNEAPOLIS-ST PAUL INTL/WOLD-CHAMBERLAIN (MSP)

# ROCHESTER ONE DEPARTURE

AL-264 (FAA)

MINNEAPOLIS, MINNESOTA



**TOP ALTITUDE:  
(JETS) 7000/  
(PROPS) 5000**

HALFWAY  
111.2 FOW  
Chan 49

NOTE: RADAR required.

### TAKEOFF MINIMUMS

- Rwys 12R, 17: Standard.
- Rwy 04: Standard with minimum climb of 210' per NM to 3000.
- Rwy 12L: 300-1½ or standard with minimum climb of 207' per NM to 1100 or alternatively with standard takeoff minimums and a normal 200' per NM climb gradient. Takeoff must occur no later than 1300' prior to DER.
- Rwys 30L/R: Standard with minimum climb of 220' per NM to 2100.
- Rwy 35: Standard with minimum climb of 219' per NM to 2100.

(CONTINUED ON FOLLOWING PAGE)

NOTE: Chart not to scale.

# ROCHESTER ONE DEPARTURE

MINNEAPOLIS, MINNESOTA

(RST1 .RST) 13SEP18

MINNEAPOLIS-ST PAUL INTL/WOLD-CHAMBERLAIN (MSP)

NC-1, 26 DEC 2024 to 23 JAN 2025

NC-1, 26 DEC 2024 to 23 JAN 2025