

RNAV (RNP) Y RWY 30R

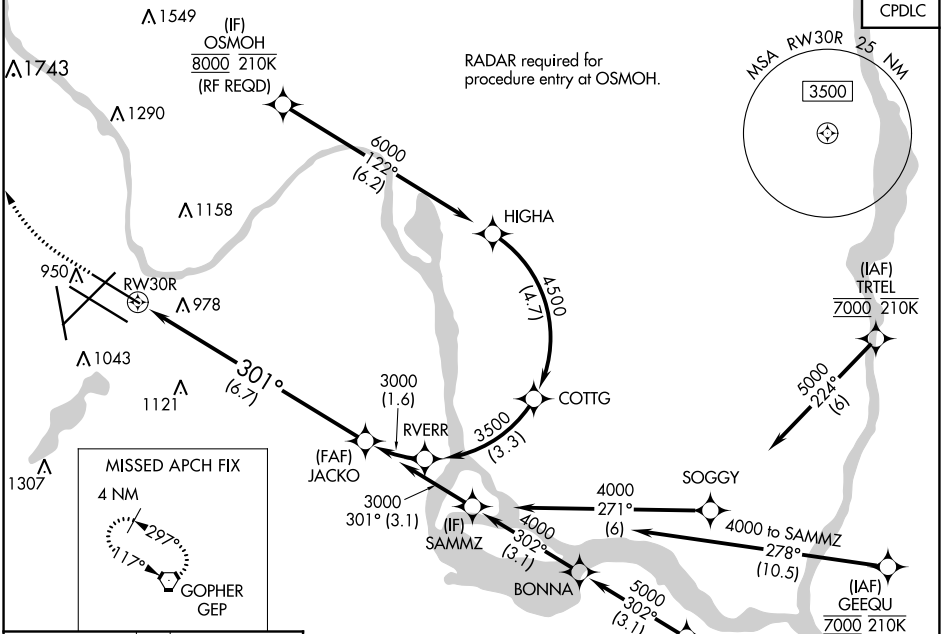
MINNEAPOLIS-ST PAUL INTL/WOLD-CHAMBERLAIN (MSP)

APP CRS	Rwy Idg	8000
301°	TDZE	822
	Apt Elev	842

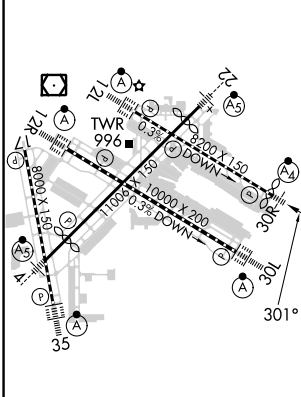
▼ For uncompensated Baro-VNAV systems, procedure NA below -1°C (-2°F) or above 54°C (130°F). Simultaneous approach authorized with Rwy 30L and ILS V RWY 35 (CONVERGING). GPS required. For inop ALS, increase RNP 0.15 all Cats visibility to RVR 4500 and RNP 0.30 Cat D visibility to 1½ SM.

MALSF MISSED APPROACH: Climb to 1300 then climbing right turn to 3000 direct GEP VORTAC and hold.

D-ATIS	MINNEAPOLIS APP CON	MINNEAPOLIS TOWER	GND CON	CLNC DEL
ARR 135.35 239.275	118.725 335.65 (Rwy 35)	123.675 273.55 (17-35)	N 121.8 348.6	133.2
DEP 120.8	119.3 335.65 (12L-30R, 4-22, 17)	123.95 273.55 (12L-30R)	S 121.9 348.6	
	126.95 335.65 (12R-30L)	126.7 273.55 (12R-30L, 4-22)	W 127.925 348.6	



ELEV 842	D	TDZE 822
-----------------	----------	-----------------



HIRL all Rwys
REIL Rwy 17
TDZ/CL Rwys 12L, 12R, 30L, and 35

1300	3000	GEP	VGSI and RNAV glidepath not coincident (VGSI Angle 3.00/TCH 71). See planview for multiple IF locations.	JACKO
				3000
RW30R			301°	GP 3.00° TCH 55
6.7 NM				

CATEGORY	A	B	C	D
RNP 0.15 DA		1097/40	275 (300-¾)	
RNP 0.30 DA		1298-1⅞	476 (500-1⅞)	

AUTHORIZATION REQUIRED

NC-1, 26 DEC 2024 to 23 JAN 2025

NC-1, 26 DEC 2024 to 23 JAN 2025