

(SMERF7.SMERF) 17229

MINNEAPOLIS-ST PAUL INTL/WOLD-CHAMBERLAIN (MSP)

SMERF SEVEN DEPARTURE (RNAV)

AL-264 (FAA)

MINNEAPOLIS, MINNESOTA

D-ATIS DEP

120.8

CLNC DEL

133.2

CPDLC

MINNEAPOLIS TOWER

123.95 273.55 (12L-30R)

126.7 273.55 (12R-30L, 4-22)

123.675 273.55 (17-35)

MINNEAPOLIS DEP CON

SOUTH/EAST 124.7 335.65

NORTH/WEST 125.75 335.65

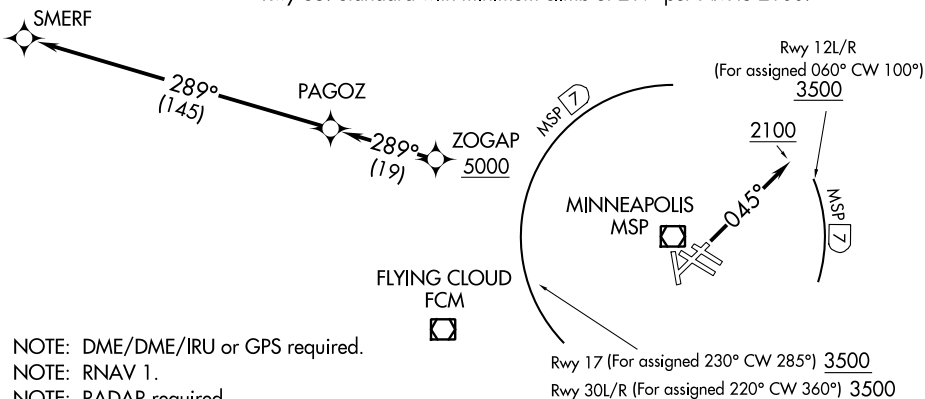
TOP ALTITUDE:
(JETS) 7000/
(PROPS) 5000

TAKEOFF MINIMUMS

Rwys 4, 12R, 17, 22, 30L/R: Standard.

Rwy 12L: 300-1½ or standard with minimum climb of 207' per NM to 1100, or alternatively, with standard takeoff minimums and a normal 200' per NM climb gradient, takeoff must occur no later than 1300' prior to DER.

Rwy 35: Standard with minimum climb of 219' per NM to 2100.



NOTE: DME/DME/IRU or GPS required.

NOTE: RNAV 1.

NOTE: RADAR required.

NOTE: Chart not to scale.

DEPARTURE ROUTE DESCRIPTION

TAKEOFF RUNWAY 4: Climb heading 045° to 2100. Thence

TAKEOFF RUNWAYS 12L/R: For assigned headings from 060° clockwise to 100°, cross MSP VOR/DME 7 DME Arc at or above 3500, maintain assigned altitude. If unable to comply, advise ATC as soon as possible prior to departure. Thence

TAKEOFF RUNWAY 17: For assigned headings from 230° clockwise to 285°, cross MSP VOR/DME 7 DME Arc at or above 3500, maintain assigned altitude. If unable to comply, advise ATC as soon as possible prior to departure. Thence

TAKEOFF RUNWAYS 22, 35: Climb on assigned heading for RADAR vectors. Thence

TAKEOFF RUNWAYS 30L/R: For assigned headings from 220° clockwise to 360°, cross MSP VOR/DME 7 DME Arc at or above 3500, maintain assigned altitude. If unable to comply, advise ATC as soon as possible prior to departure. Thence

. . . . expect RADAR vectors to cross ZOGAP at or above 5000, then on track 289° to PAGOZ and on track 289° to SMERF, turbojet aircraft maintain 7000 or lower assigned altitude, all other aircraft maintain 5000 or lower assigned altitude. Expect filed altitude/flight level ten minutes after departure.

SMERF SEVEN DEPARTURE (RNAV)

MINNEAPOLIS, MINNESOTA

(SMERF7.SMERF) 17AUG17

MINNEAPOLIS-ST PAUL INTL/WOLD-CHAMBERLAIN (MSP)

NC-1, 26 DEC 2024 to 23 JAN 2025

NC-1, 26 DEC 2024 to 23 JAN 2025