

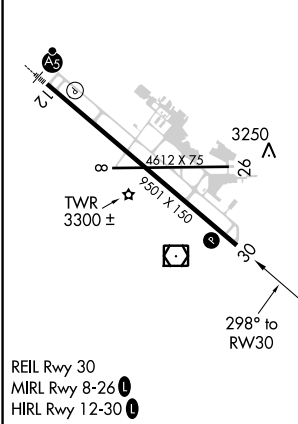
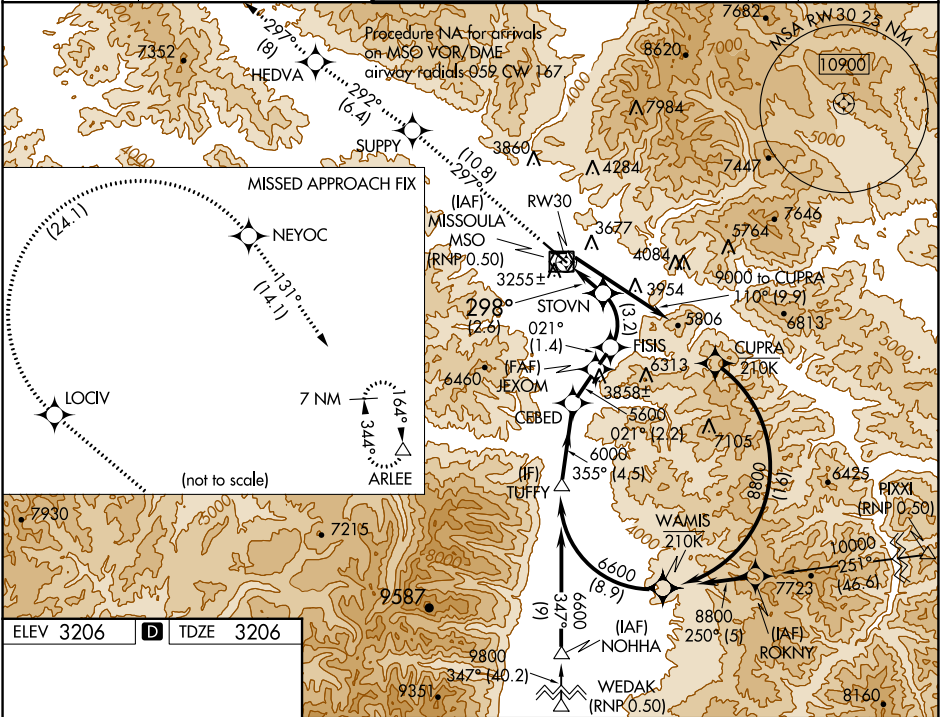
APP CRS	Rwy Idg	9501
298°	TDZE	3206
	Apt Elev	3206

RNAV (RNP) RWY 30

MISSOULA MONTANA (MISO)

RNP AR APCH. RF required.	MISSED APPROACH: Climb to 11000 on track 297° to SUPPY and on track 292° to HEDVA and on track 297° to LOCIV, then right turn to NEYOC and on track 131° to ARLEE and hold. *Misted approach requires minimum climb of 215 feet per NM to 5000.
<p>For uncompensated Baro-VNAV systems, procedure NA below -21°C (-5°F) or above 43°C (109°F). When local altimeter setting not received, procedure NA.</p> <p>-12°C</p>	

ATIS 126.65	SPOKANE APP CON * 124.9 298.95	MISSOULA TOWER * 118.4 (CTAF) 377.175	GND CON 121.9	UNICOM 122.95
-----------------------	--	---	-------------------------	-------------------------



11000 SUPPY	HEDVA	JEXOM	CEBED	TUFFY
tr 297°	tr 292°			
	STOVN	FISIS	JEXOM	CEBED
	4089	5135	5600	6600
	298°	021°	021°	355°
	5600	6000	6000	6600
	2.6 NM	3.2 NM	1.4 NM	2.2 NM
	4.5 NM			
GP 3.00°				TCH 50
CATEGORY	A	B	C	D
RNP 0.30 DA*	3524-1 318 (400-1)			
RNP 0.30 DA	3582-1¼ 376 (400-1¼)			

AUTHORIZATION REQUIRED

NW-1, 26 DEC 2024 to 23 JAN 2025

NW-1, 26 DEC 2024 to 23 JAN 2025