

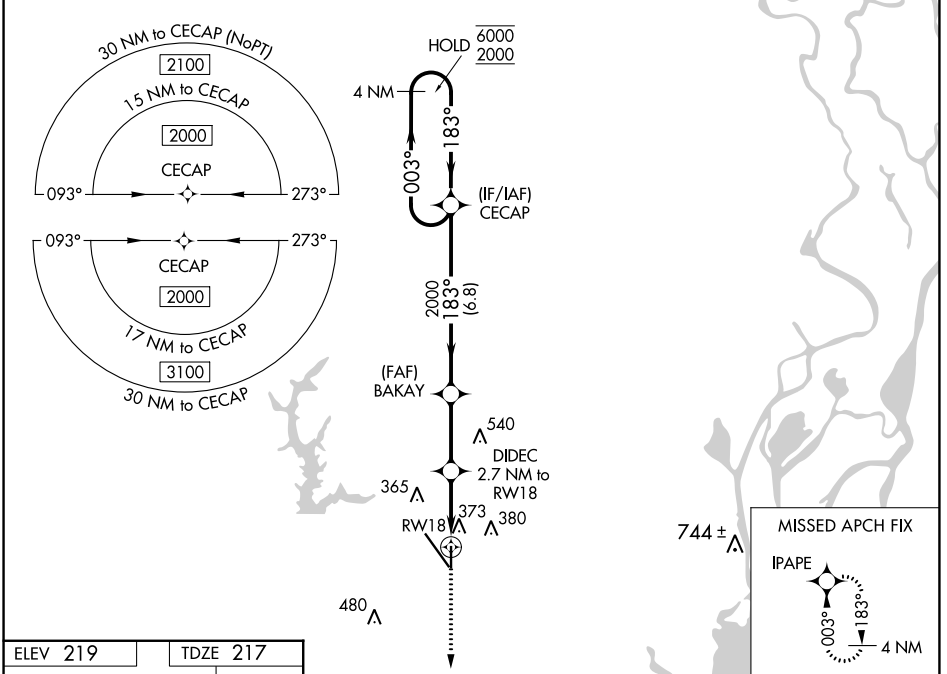
WAAS CH 78128 W18A	APP CRS 183°	Rwy ldg TDZE Apt Elev	4376 217 219
--	------------------------	-----------------------------	---

RNAV (GPS) RWY 18

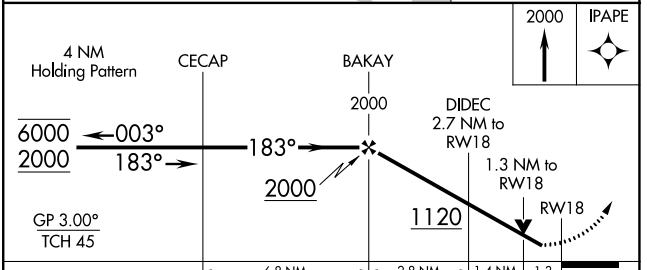
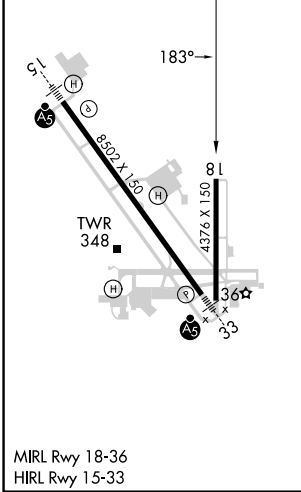
MOBILE RGNL (MOB)

RNP APCH - GPS.	MISSED APPROACH: Climb to 2000 direct IPAPE and hold.
▼ For uncompensated Baro-VNAV systems, LNAV/VNAV NA below -4°C or above 42°C. Rwy 18 helicopter visibility reduction below 3/4 SM NA.	

ATIS 124.75 257.85	MOBILE APP CON ★ 118.5 269.3	MOBILE TOWER ★ 118.3 (CTAF) 239.0	GND CON 121.9 348.6	CLNC DEL 119.85	UNICOM 122.95
------------------------------	--	---	-------------------------------	---------------------------	-------------------------



ELEV 219	TDZE 217
----------	----------



CATEGORY	A	B	C	D
LPV DA		508-1	291 (300-1)	
LNAV/VNAV DA		624-1 3/8	407 (500-1 3/8)	
LNAV MDA	640-1	423 (500-1)	640-1 1/4	423 (500-1 1/4)
C CIRCLING	680-1	461 (500-1)	740-1 1/2	780-2
			521 (600-1 1/2)	561 (600-2)

SE-4, 26 DEC 2024 to 23 JAN 2025

SE-4, 26 DEC 2024 to 23 JAN 2025