

LOC/DME I- RJ	APP CRS	Rwy Idg	9618
108.5	320°	TDZE	25
Chan 22		Apt Elev	26

ILS or LOC RWY 32

MOBILE INTL (BFM)

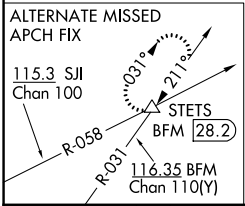
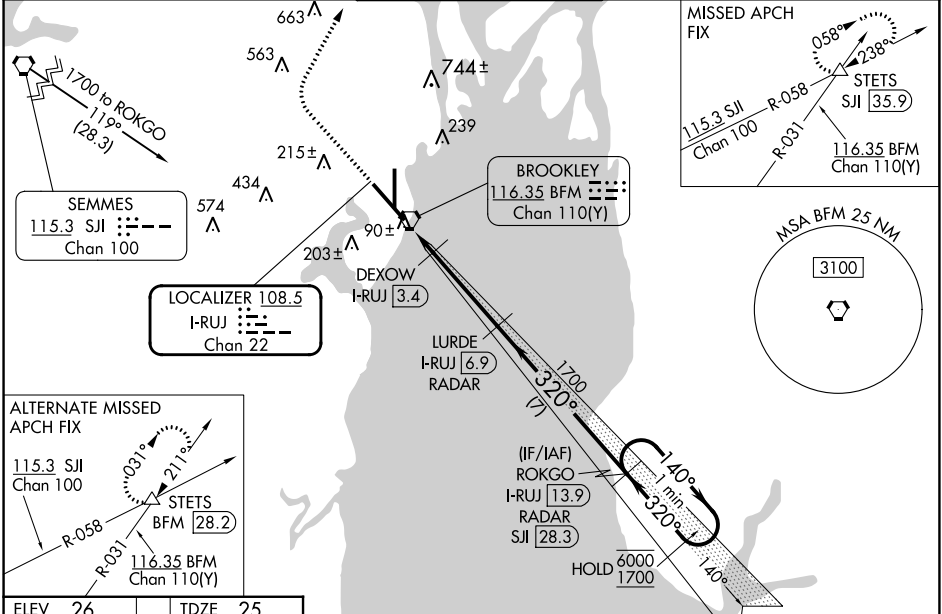
DME or RADAR required.

⚠ For inop ALS, increase S-LOC 32 Cat C/D visibility to 1¾ and DEXOW S-LOC 32 Cat C/D visibility to RVR 4500.

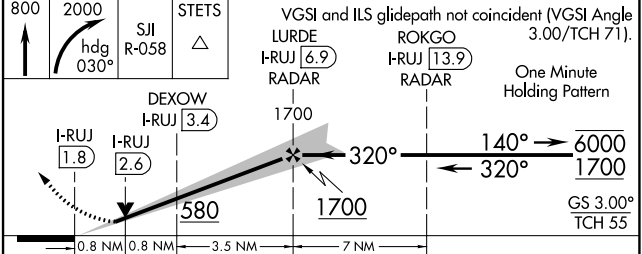
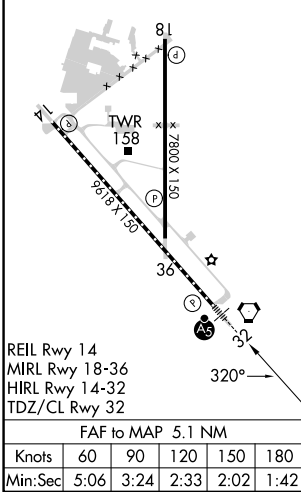
MALS R

MISSED APPROACH: Climb to 800 then climbing right turn to 2000 on heading 030° and on SJJ R-058 to STETS INT/SJJ 35.9 DME and hold.

ATIS 135.575	MOBILE APP CON ★ 118.5 269.3	INTERNATIONAL TOWER ★ 118.8 (CTAF) 251.1	GND CON 121.7 239.3	UNICOM 122.95
------------------------	--	--	-------------------------------	-------------------------



ELEV 26	TDZE 25
---------	---------



CATEGORY	A	B	C	D
S-ILS 32	225/18		200 (200-½)	
S-LOC 32	580/24	555 (600-½)	580/60	555 (600-1¼)
C CIRCLING	680-1	654 (700-1)	680-1¾ 654 (700-1¾)	1100-3 1074 (1100-3)
DEXOW FIX MINIMUMS				
S-LOC 32	340/24		315 (400-½)	
C CIRCLING	680-1	654 (700-1)	680-1¾ 654 (700-1¾)	1100-3 1074 (1100-3)

SE-4, 26 DEC 2024 to 23 JAN 2025

SE-4, 26 DEC 2024 to 23 JAN 2025