

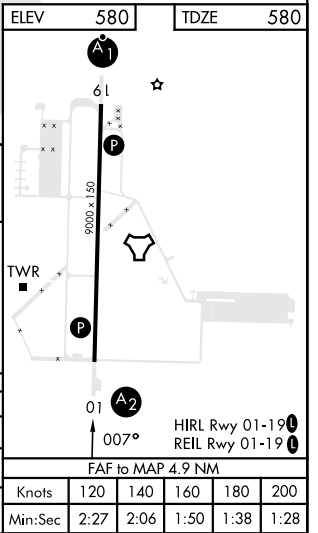
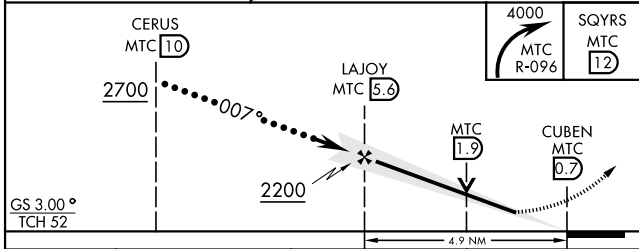
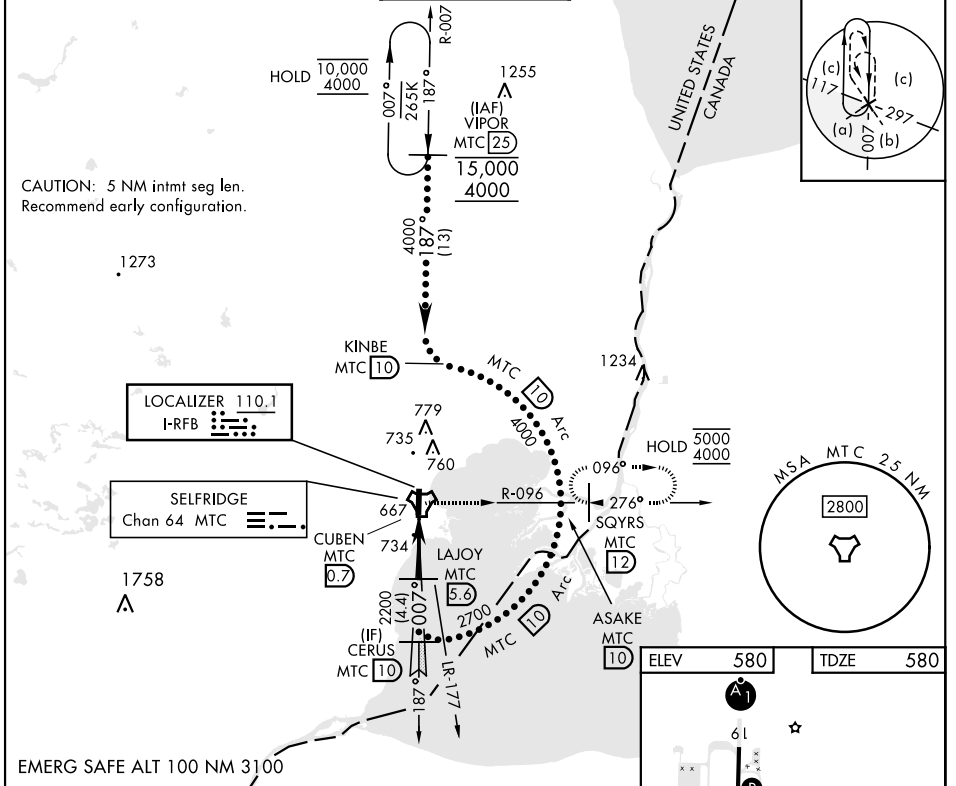
# HI-ILS or LOC Y RWY 1

LOC I-RFB <b>110.1</b>	APCH CRS <b>007°</b>	Rwy Idg TDZE Arprt Elev <b>9000</b> <b>580</b> <b>580</b>	[USAF]	SELFDRIDGE ANGB (KMTC)
---------------------------	-------------------------	--	--------	------------------------

▼ \* When ALS inop, increase RVR to 45 and vis to 7/8 mile.  
 \*\* When ALS inop, increase RVR to 60, vis to 1 1/8 miles.  
 \*\*\* Circling not authorized W of Rwy 01-19.

SALS MISSED APPROACH: Climbing right turn to 4000, intercept MTC R-096 to SQYRS and hold, continue climb-in-hold to 4000.

ATIS <b>125.325 270.1</b>	APP CON <b>119.6 318.2</b>	TOWER ★ <b>120.15 (CTAF) 0 225.4</b>	GND CON <b>128.3 275.8</b>	CLNC DEL <b>128.3 275.8</b>
------------------------------	-------------------------------	---	-------------------------------	--------------------------------



CATEGORY	C	D	E
S-ILS 01*	873/40	293 (300-3/4)	
S-LOC 01**	1000/50	420 (500-1)	
CIRCLING***	1040-1 1/2 460 (500-1 1/2)	1140-2	560 (600-2)

# HI-ILS or LOC Y RWY 1

EC-1, 26 DEC 2024 to 23 JAN 2025

EC-1, 26 DEC 2024 to 23 JAN 2025