

TACAN MTC Chan 64	APCH CRS 018°	Rwy ldg TDZE Arprt Elev 9000 580 580
----------------------	------------------	---

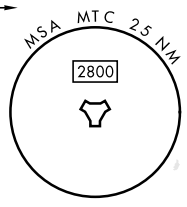
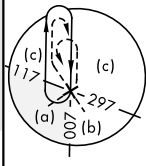
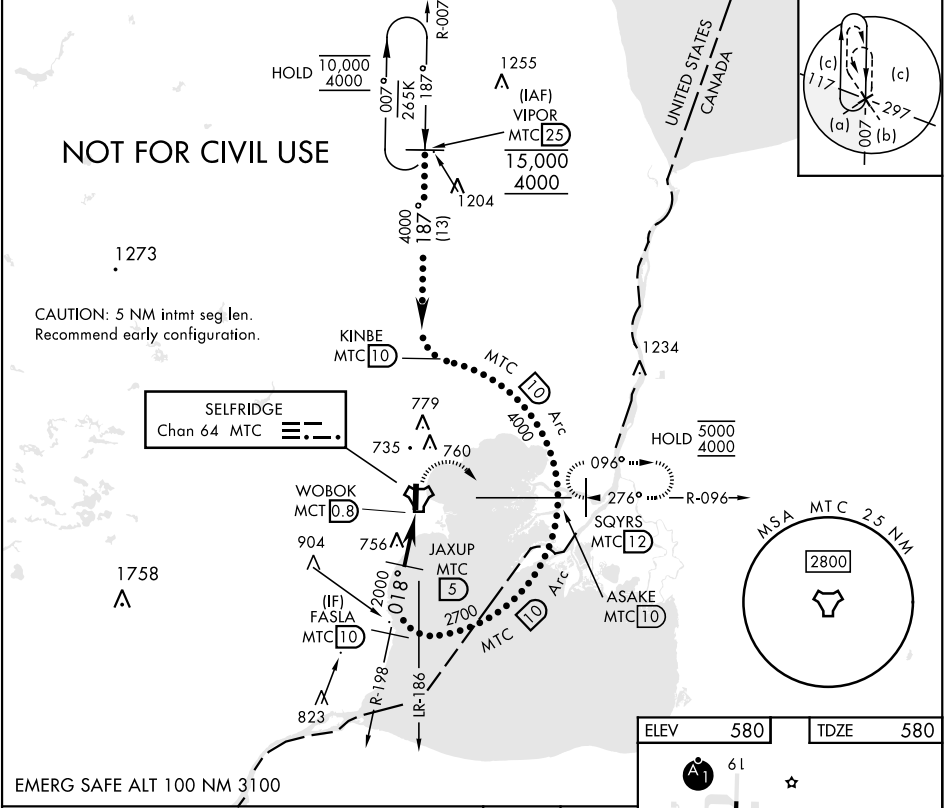
[USAF]

SELFRIDGE ANGB (KMTC)

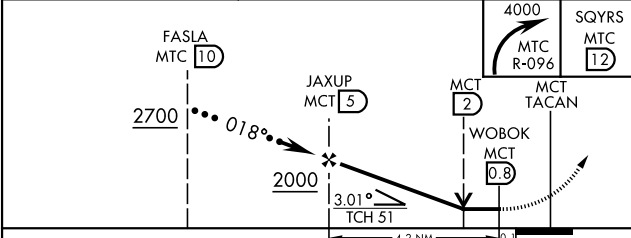
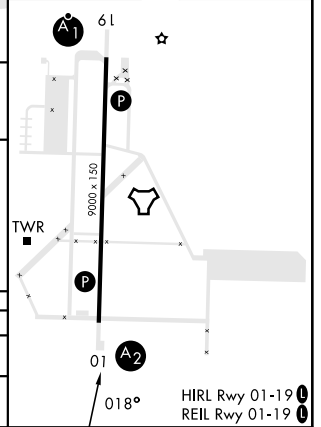
▼ * When ALS inop, increase vis to 1 3/8 miles.
 ** Circling not authorized W of Rwy 01-19.

SALS A2	MISSED APPROACH: Climbing right turn to 4000, intercept MTC R-096 to SQYRS and hold, continue to climb in hold to 4000.
-------------------	---

ATIS 125.325 270.1	APP CON 119.6 318.2	TOWER ★ 120.15 (CTAF) 0 225.4	GND CON 128.3 275.8	CLNC DEL 128.3 275.8
------------------------------	-------------------------------	---	-------------------------------	--------------------------------



ELEV	580	TDZE	580
------	-----	------	-----



CATEGORY	C	D	E
S-1*	1040/55	460 (500-1)	
CIRCLING **	1040-1 1/2 460 (500-1 1/2)	1140-2	560 (600-2)

EC-1, 26 DEC 2024 to 23 JAN 2025

EC-1, 26 DEC 2024 to 23 JAN 2025