

HI-TACAN Y RWY 19

TACAN MTC Chan 64	APCH CRS 177°	Rwy ldg TDZE Arprt Elev 9000 579 580
-----------------------------	-------------------------	--

[USAF]

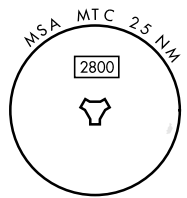
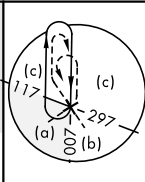
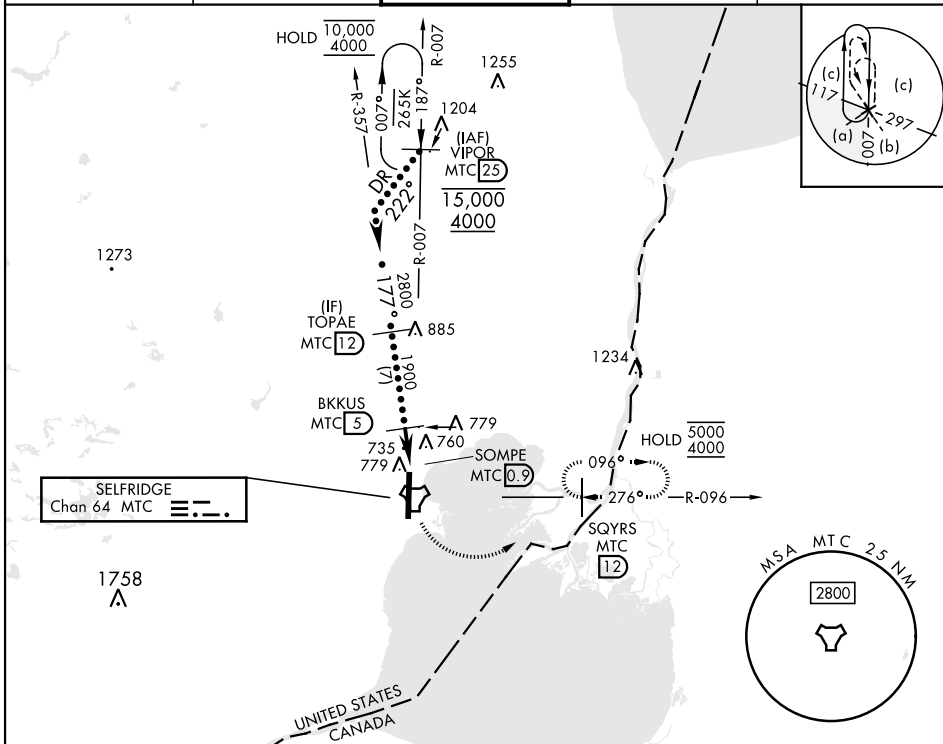
SELFRIDGE ANGB (KMTC)

▼ * When ALS inop, increase vis to 1½ miles.
 ** Circling not authorized W of Rwy 01-19.



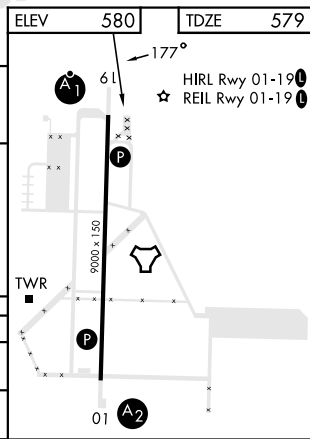
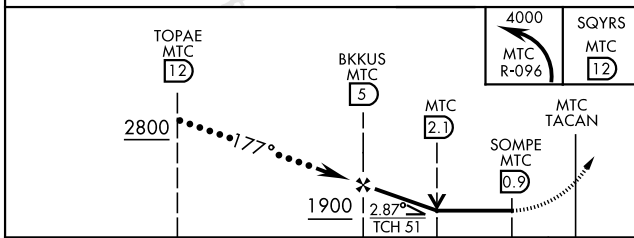
MISSED APPROACH: Climbing left turn to 4000, intercept MTC R-096 to SQYRS and hold, continue climb-in-hold to 4000.

ATIS 125.325 270.1	APP CON 119.6 318.2	TOWER ★ 120.15 (CTAF) 0 225.4	GND CON 128.3 275.8	CLNC DEL 128.3 275.8
------------------------------	-------------------------------	---	-------------------------------	--------------------------------



EMERG SAFE ALT 100 NM 3100

ELEV	580	TDZE	579
------	-----	------	-----



CATEGORY	C	D	E
S-19*	1040/50	461 (500-1)	
CIRCLING**	1040-1½ 460 (500-1½)	1140-2	560 (600-2)

HI-TACAN Y RWY 19

EC-1, 26 DEC 2024 to 23 JAN 2025

EC-1, 26 DEC 2024 to 23 JAN 2025