

MT. CLEMENS, MICHIGAN

RNAV (GPS) RWY 19

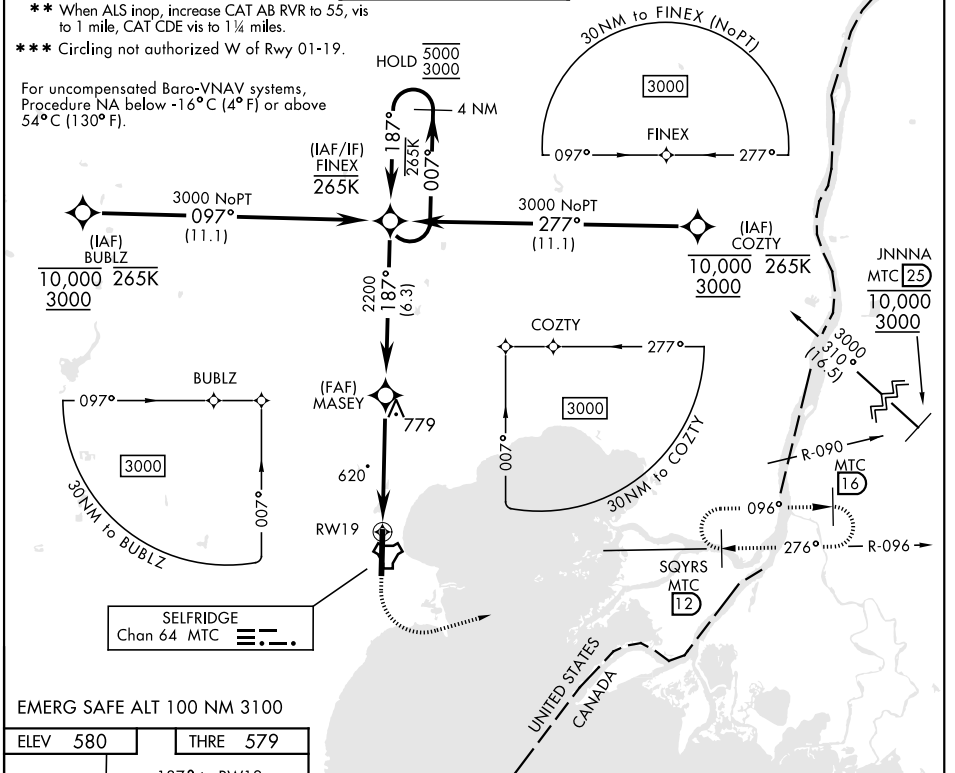
APCH CRS 187°	Rwy ldg THRE Arpt Elev	9000 579 580
-------------------------	------------------------------	---

AL-276 [USAF]

SELFRIDGE ANGB (KMTC)

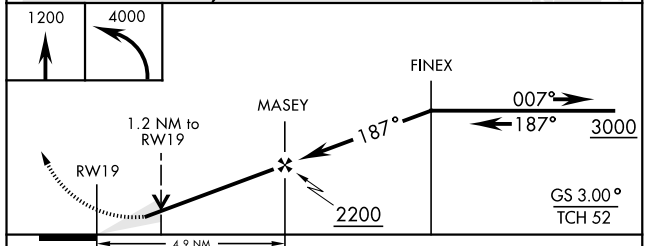
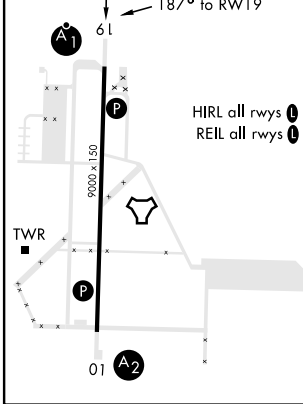
DME/DME RNP-0.3 NA.	ALSF-1	MISSED APPROACH: Climb to 1200 then climbing left turn to 4000 direct SQYRS (MTC TACAN R-096/T2DME), do not exceed 250 KIAS until turn completion and hold, continue climb-in-hold to 4000.
<p>▼ * When ALS inop, increase vis to 1 ¼ miles.</p> 		

ATIS 125.325 270.1	APP CON 119.6 318.2	TOWER ★ 120.15 (CTAF) 0 225.4	GND CON 128.3 275.8	CLNC DEL 128.3 275.8
------------------------------	-------------------------------	---	-------------------------------	--------------------------------



EMERG SAFE ALT 100 NM 3100

ELEV 580	THRE 579
-----------------	-----------------



CATEGORY	A	B	C	D	E
LNAV/VNAV DA*	1000/40		421	(500-¾)	
LNAV MDA**	1000/24 421 (500-½)		1000/40 421 (500-¾)		
C CIRCLING ***	1040-1 460 (500-1)	1040-1½ 460 (500-1½)		1140-2 560 (600-2)	

MT. CLEMENS, MICHIGAN

42° 37' N-82° 50' W

SELFRIDGE ANGB (KMTC)

Orig 12AUG21

RNAV (GPS) RWY 19

EC-1, 26 DEC 2024 to 23 JAN 2025

EC-1, 26 DEC 2024 to 23 JAN 2025