

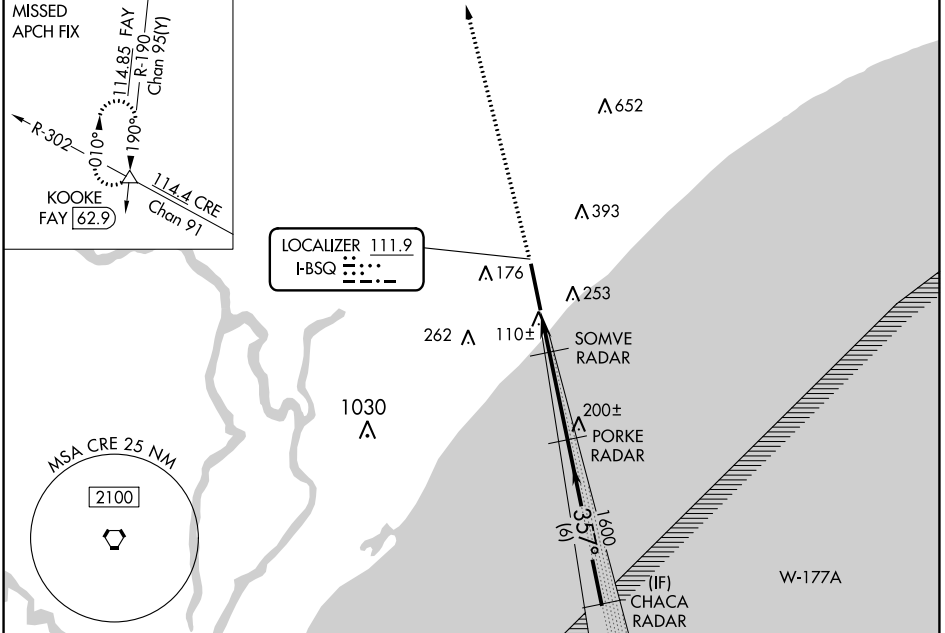
LOC I-BSQ 111.9	APP CRS 357°	Rwy Idg TDZE Apt Elev	9503 25 25
---------------------------	------------------------	-----------------------------	---------------------------------------

ILS or LOC RWY 36

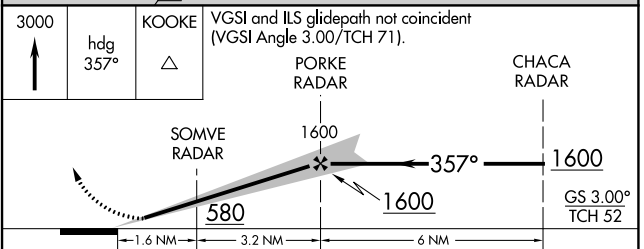
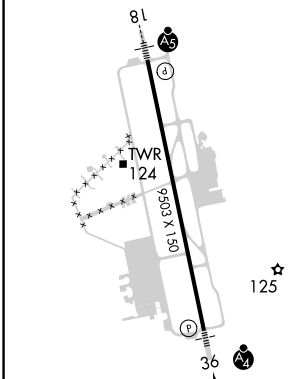
MYRTLE BEACH INTL (MYR)

RADAR required.		MALSF	MISSED APPROACH: Climb to 3000 on heading 357° expect RADAR vectors to KOOKE INT/FAY 62.9 DME and hold.		
For inop ALS increase S-LOC 36 Cats D/E visibility to RVR 5000.					

ATIS 123.925	MYRTLE BEACH APP CON ★ (171° - 321°) 127.4 257.95 (322° - 170°) 119.2 350.3	MYRTLE BEACH TOWER ★ 128.45 (CTAF) 259.3	GND CON 120.3 275.8	CLNC DEL 120.3	UNICOM 122.95
------------------------	---	--	-------------------------------	--------------------------	-------------------------



ELEV 25	TDZE 25
---------	---------



CATEGORY	A	B	C	D	E
S-ILS 36	225/40 200 (200-¾)				
S-LOC 36	360/40 335 (400-¾)				
CIRCLING	560-1 535 (600-1)	700-2 675 (700-2)	700-2¼ 675 (700-2¼)	700-2½ 675 (700-2½)	

SE-2, 26 DEC 2024 to 23 JAN 2025

SE-2, 26 DEC 2024 to 23 JAN 2025