


| | | |
|--|------------------------|---|
| WAAS CH 93819 W18A | APP CRS 177° | Rwy Idg 9503 TDZE 23 Apt Elev 25 |
|--|------------------------|---|

RNAV (GPS) RWY 18

MYRTLE BEACH INTL (MYR)

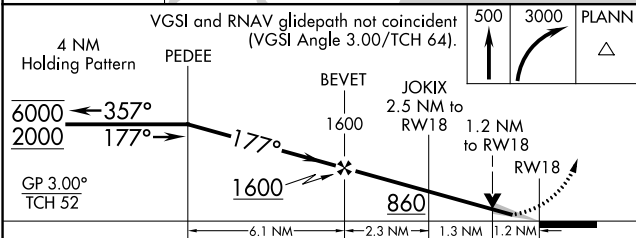
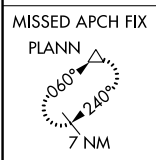
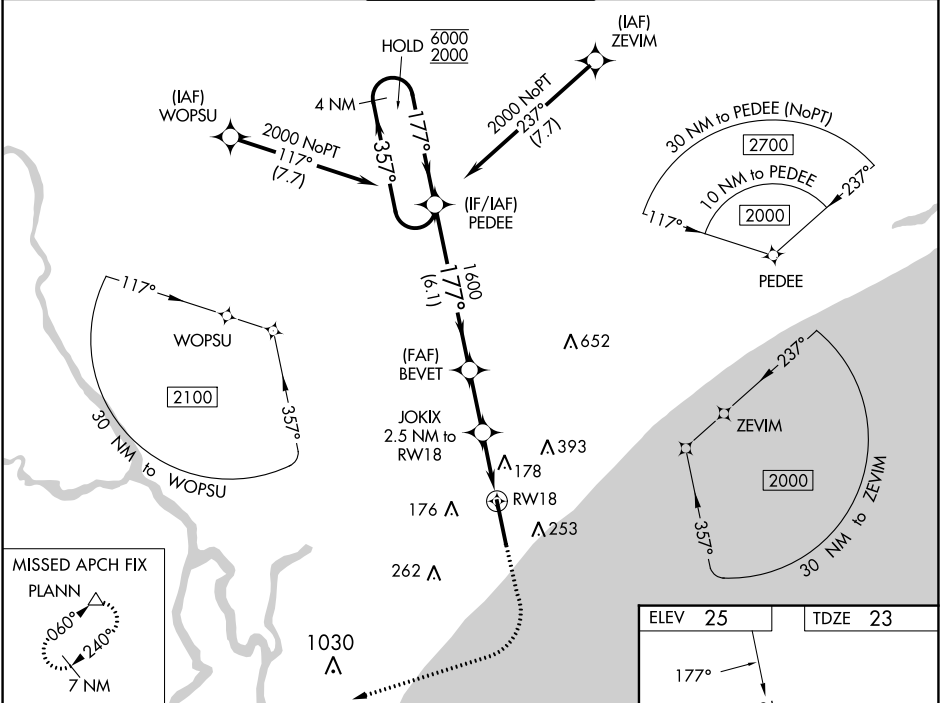
RNP APCH - GPS

⚠ For uncompensated Baro-VNAV systems, LNAV/VNAV NA below -15°C or above 54°C. For inop ALS, increase LPV Cat E visibility to RVR 4000, increase LNAV/VNAV Cat E visibility to 1½ mile and increase LNAV/Cats C, D and E visibility to RVR 6000.
*RVR 1800 authorized with use of FD or AP or HUD to DA.

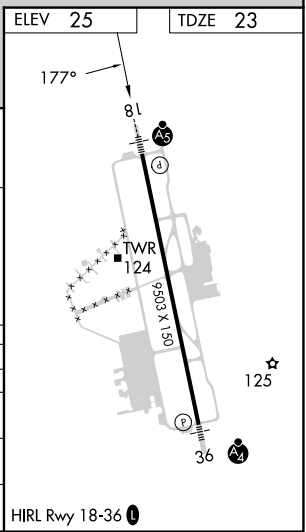
MALSR 

MISSED APPROACH: Climb to 500 then climbing right turn to 3000 direct PLANN and hold, continue climb-in-hold to 3000.

| | | | | | |
|------------------------|---|---|-------------------------------|--------------------------|-------------------------|
| ATIS 123.925 | MYRTLE BEACH APP CON * (171° - 321°) 127.4 257.95 (322° - 170°) 119.2 350.3 | MYRTLE BEACH TOWER * 128.45 (CTAF) 0 259.3 | GND CON 120.3 275.8 | CLNC DEL 120.3 | UNICOM 122.95 |
|------------------------|---|---|-------------------------------|--------------------------|-------------------------|



| | | | |
|--|--------|----------------|------------------------|
| VGSI and RNAV glidepath not coincident (VGSI Angle 3.00/TCH 64). | 500 | 3000 | PLANN |
| 4 NM Holding Pattern | PEDEE | BEVET | JOKIX |
| 6000 ← 357° | 1600 | 2.5 NM to RW18 | 1.2 NM to RW18 |
| 2000 → 177° | 860 | | |
| GP 3.00° TCH 52 | | | |
| | 6.1 NM | 2.3 NM | 1.3 NM |
| CATEGORY | A | B | C |
| LPV DA* | | 223/24 | 200 (200-½) |
| LNAV/VNAV DA | | 465/50 | 442 (500-1) |
| LNAV MDA | 440/24 | 417 (500-½) | 440/40 |
| CIRCLING | 560-1 | 535 (600-1) | 700-2 675 (700-2) |
| | | | 700-2¼ 675 (700-2¼) |
| | | | 700-2½ 675 (700-2½) |



SE-2, 26 DEC 2024 to 23 JAN 2025

SE-2, 26 DEC 2024 to 23 JAN 2025