

APP CRS	Rwy Idg	5008
062°	TDZE	21
	Apt Elev	36

RNAV (GPS) RWY 6

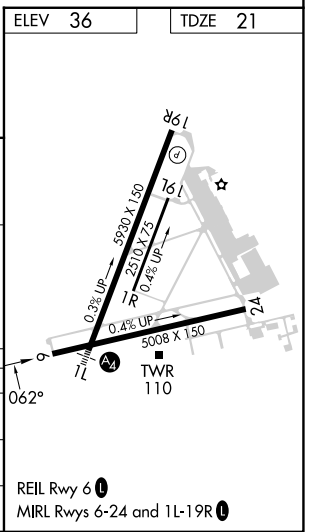
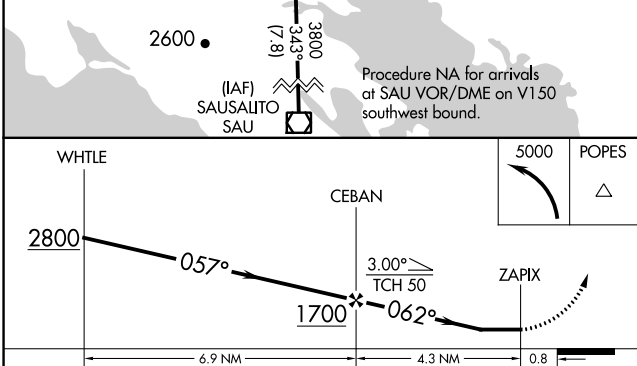
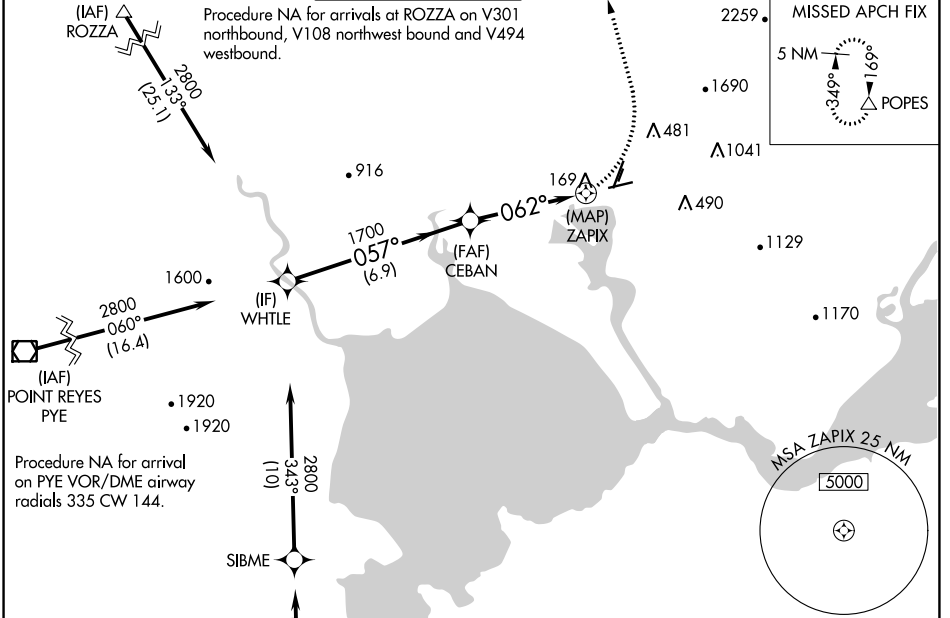
NAPA COUNTY (APC)

RNP APCH-GPS.

▼ Rwy 6 helicopter visibility reduction below 3/4 SM NA.
▲ Circling Cats A/B/C NA east of Rwy 19R and northwest of Rwy 24. Circling Cat D NA east of Rwy 19L-1R.

MISSED APPROACH: Climbing left turn to 5000 direct POPES and hold, continue climb-in-hold to 5000.
 *Missed approach requires minimum climb of 410 feet per NM to 2200.

ATIS 124.05	OAKLAND CENTER 127.8 353.5	NAPA TOWER * 118.7 (CTAF) 257.8	GND CON 121.7	CLNC DEL 127.85	UNICOM 122.95
-----------------------	--------------------------------------	---	-------------------------	---------------------------	-------------------------



CATEGORY	A	B	C	D
LNAV MDA*	480-1	459 (500-1)	480-1 3/8	459 (500-1 3/8)
LNAV MDA	1340-1 1/4 1319 (1400-1 1/4)	1340-1 1/2 1319 (1400-1 1/2)	1340-3	1319 (1400-3)
C CIRCLING	1340-1 1/4 1304 (1400-1 1/4)	1340-1 1/2 1304 (1400-1 1/2)	1340-3	1304 (1400-3)

SW-2, 26 DEC 2024 to 23 JAN 2025

SW-2, 26 DEC 2024 to 23 JAN 2025