

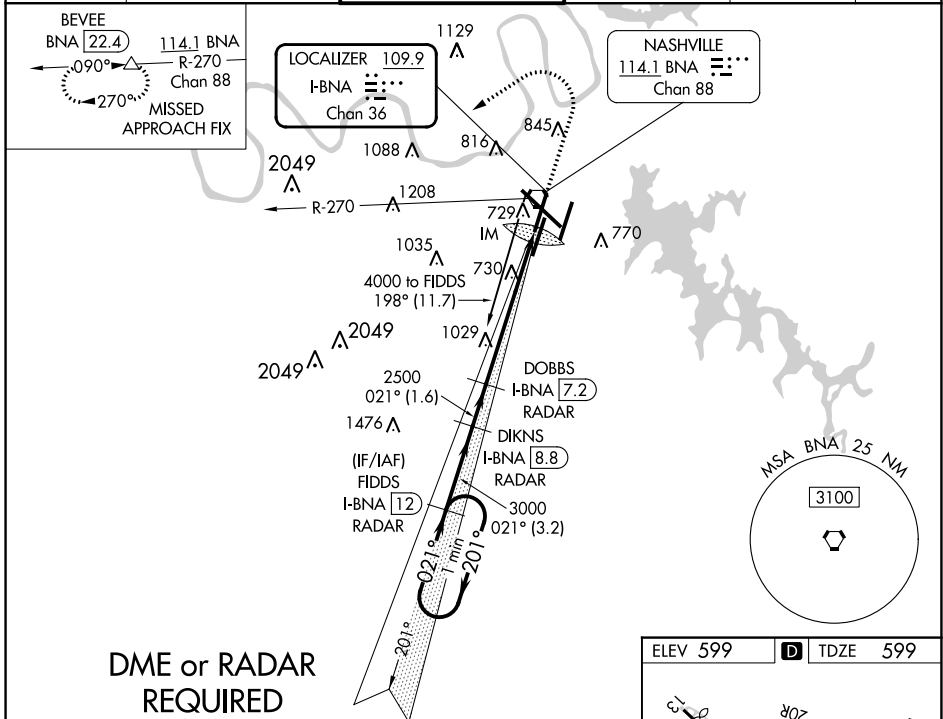
LOC/DME I-BNA 109.9 Chan 36	APP CRS 021°	Rwy ldg 7702 TDZE 599 Apt Elev 599
------------------------------------------	------------------------	---------------------------------------------------------------

ILS RWY 2L (CAT II & III)

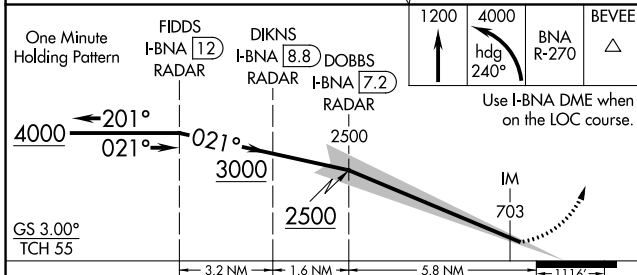
NASHVILLE INTL (BNA)

<p>Simultaneous approach authorized with Rwy 2R. DME or radar required. Cat II: RVR 1000 authorized with specific OPSPEC, MSPEC, or LOA approval and use of Autoland or HUD to touchdown.</p>	ALSF-2 	MISSED APPROACH: Climb to 1200 then climbing left turn to 4000 on heading 240° and on BNA VORTAC R-270 to BEVEE/BNA 22.4 DME and hold.
	<p>Simultaneous approach authorized with Rwy 2R. DME or radar required. Cat II: RVR 1000 authorized with specific OPSPEC, MSPEC, or LOA approval and use of Autoland or HUD to touchdown.</p>	

D-ATIS 135.1	NASHVILLE APP CON 118.4 360.7	NASHVILLE TOWER 118.6 257.8	GND CON 121.9 348.6	CLNC DEL 126.05	CPDLC
------------------------	-----------------------------------------	---------------------------------------	-------------------------------	---------------------------	-------



DME or RADAR REQUIRED



CATEGORY	A	B	C	D
	S-ILS 2L CAT II RA 104/12 100 DA 699			
	S-ILS 2L CAT III RVR 600			

CATEGORY II & III ILS - SPECIAL AIRCREW & AIRCRAFT CERTIFICATION REQUIRED

ELEV 599	D TDZE 599
----------	-------------------