

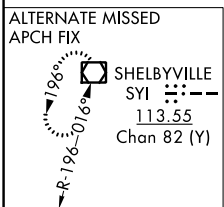
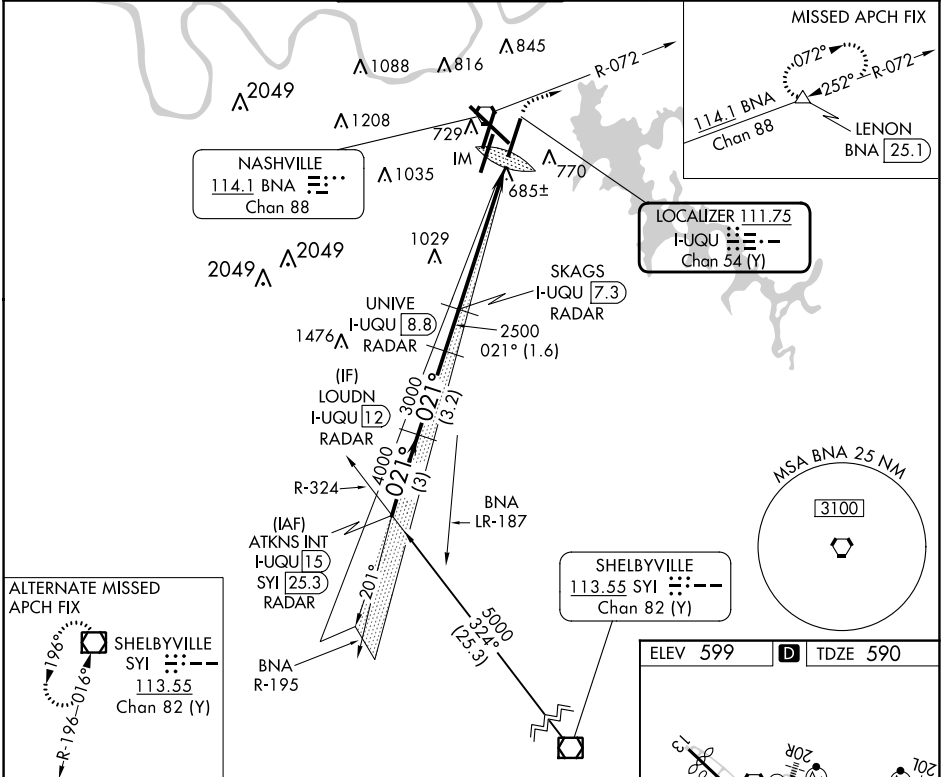
LOC/DME I-UQU 111.75 Chan 54 (Y)	APP CRS 021°	Rwy Idg TDZE Apt Elev 8000 590 599
--	------------------------	--

ILS RWY 2R (SA CAT I)

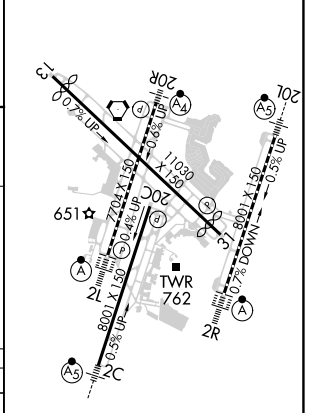
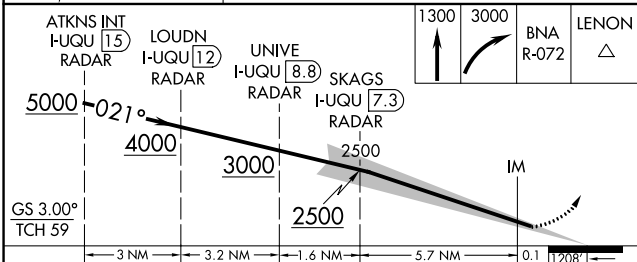
NASHVILLE INTL (BNA)

DME required.	ALSF-2	MISSED APPROACH: Climb to 1300 then climbing right turn to 3000 on BNA R-072 to LENON/BNA 25.1 DME and hold.
<p>Simultaneous approach authorized with Rwy 2L/C. Requires specific OPSPEC, MSPEC, or LOA approval and use of HUD to DA.</p>		

D-ATIS 135.1	NASHVILLE APP CON 118.4 360.7	NASHVILLE TOWER 118.6 257.8	GND CON 121.9 348.6	CLNC DEL 126.05	CPDLC
------------------------	---	---------------------------------------	-------------------------------	---------------------------	-------



ELEV 599	TDZE 590
----------	----------



CATEGORY	A	B	C	D
S-ILS 2R	RA 121/14 150 DA 740			
SA CATEGORY I ILS - SPECIAL AIRCREW & AIRCRAFT CERTIFICATION REQUIRED				

HIRL all Rwys
TDZ/CL Rwys 2L and 2R
REIL Rwys 13, 20C, and 31

SE-1, 26 DEC 2024 to 23 JAN 2025

SE-1, 26 DEC 2024 to 23 JAN 2025