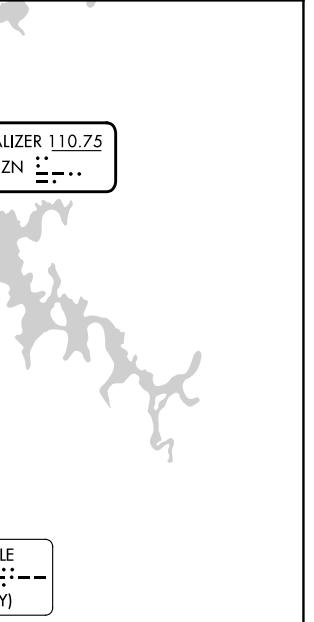
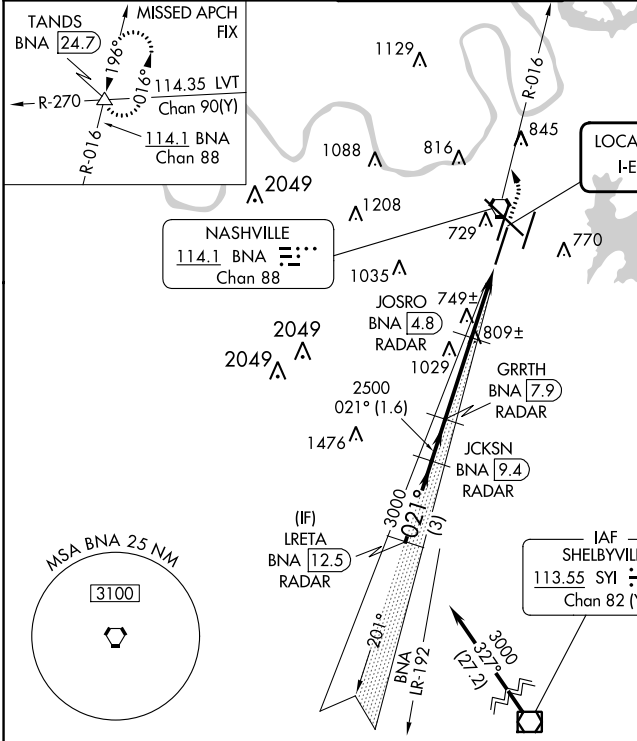


LOC I-EZN 110.75	APP CRS 021°	Rwy Idg TDZE Apt Elev	7601 587 599
----------------------------	------------------------	-----------------------------	---

ILS or LOC RWY 2C

NASHVILLE INTL (BNA)

DME or RADAR required.		MALSR		MISSED APPROACH: Climb to 1300 then climbing left turn to 4000 on BNA VORTAC R-016 to TANDS INT/BNA 24.7 and hold.	
▼ Simultaneous approach authorized. For inop ALS, increase S-LOC 2C Cats C and D visibility to RVR 6000. DME from BNA VORTAC. ▲ Simultaneous reception of I-EZN and BNA DME required. # RVR 1800 authorized with the use of FD or AP or HUD to DA.					
D-ATIS 135.1	NASHVILLE APP CON 118.4 360.7	NASHVILLE TOWER 118.6 257.8	GND CON 121.9 348.6	CLNC DEL 126.05	CPDLC



VGSI and ILS glidepath not coincident.

LRETA BNA 12.5 RADAR	JCKSN BNA 9.4 RADAR	GRRTH BNA 7.9 RADAR	JOSRO BNA 4.8 RADAR	BNA 3.2	BNA 2
3000	2500	1520	1300	4000	TANDS
GS 3.00° TCH 60	021°	021°	021°	021°	△
3 NM	1.6 NM	3.1 NM	1.6 NM	1.2 NM	

*LOC only.

ELEV 599	D	TDZE 587
HIRL all Rwys		
TDZ/CL Rwys 2L and 2R		
REIL Rwys 13, 20C, and 31		
FAF to MAP 5.9 NM		
Knots	60	90 120 150 180
Min:Sec	5:54	3:56 2:57 2:22 1:58

CATEGORY	A	B	C	D
S-ILS 2C #	787/24		200 (200-1/2)	
S-LOC 2C	1000/24	413 (500-1/2)	1000/40	413 (500-3/4)
CIRCLING	1100-1 501 (600-1)	1120-1 521 (600-1)	1200-1 3/4 601 (700-1 3/4)	1380-2 1/2 781 (800-2 1/2)

SE-1, 26 DEC 2024 to 23 JAN 2025

SE-1, 26 DEC 2024 to 23 JAN 2025