

APP CRS	Rwy Idg	<b>8000</b>
<b>201°</b>	TDZE	<b>551</b>
	Apt Elev	<b>599</b>

# RNAV (RNP) Z RWY 20L

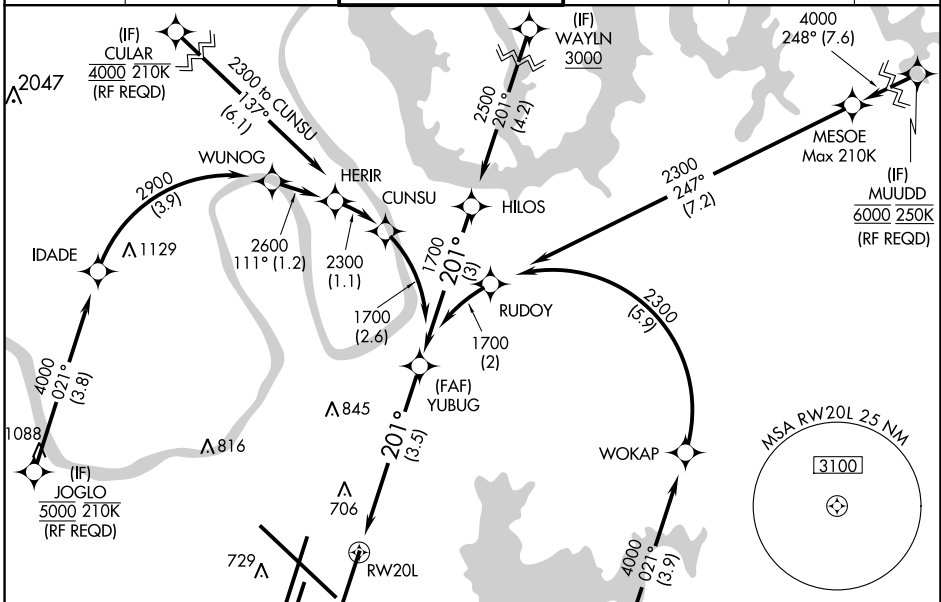
NASHVILLE INTL (BNA)

**GPS required.** Simultaneous approach authorized with Rwy 20R. Use of FD or AP providing RNAV track guidance required during simultaneous operations. For uncompensated Baro-VNAV systems, procedure NA below -11°C (13°F) or above 54°C (130°F). Inop table does not apply to RNP 0.20. For inop MALSRL, increase RNP 0.30 all Cats visibility to 1½.

**MALSRL**

**MISSED APPROACH:** Climb to 1300 then climbing left turn to 4000 direct CENOP and hold.

D-ATIS <b>135.1</b>	NASHVILLE APP CON <b>118.4 360.7</b>	NASHVILLE TOWER <b>118.6 257.8</b>	GND CON <b>121.9 348.6</b>	CLNC DEL <b>126.05</b>	CPDLC
------------------------	---	---------------------------------------	-------------------------------	---------------------------	-------



**RADAR REQUIRED**

ELEV 599 **D** TDZE 551

MISSED APCH FIX

CENOP

1300 4000 CENOP

See planview for multiple IF locations.

RW20L

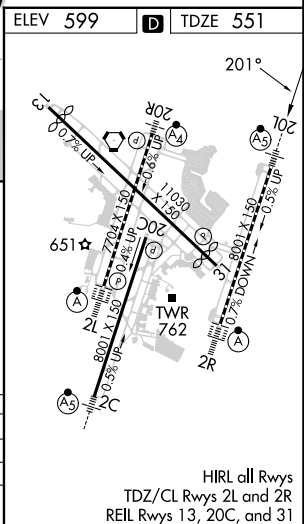
YUBUG 1700

GP 3.00° TCH 47

3.5 NM

CATEGORY	A	B	C	D
RNP 0.20 DA		810/40	259 (200-¾)	
RNP 0.30 DA		1008/55	457 (400-1)	

## AUTHORIZATION REQUIRED



SE-1, 26 DEC 2024 to 23 JAN 2025

SE-1, 26 DEC 2024 to 23 JAN 2025