

# RNAV (RNP) Z RWY 2R

NASHVILLE INTL (BNA)

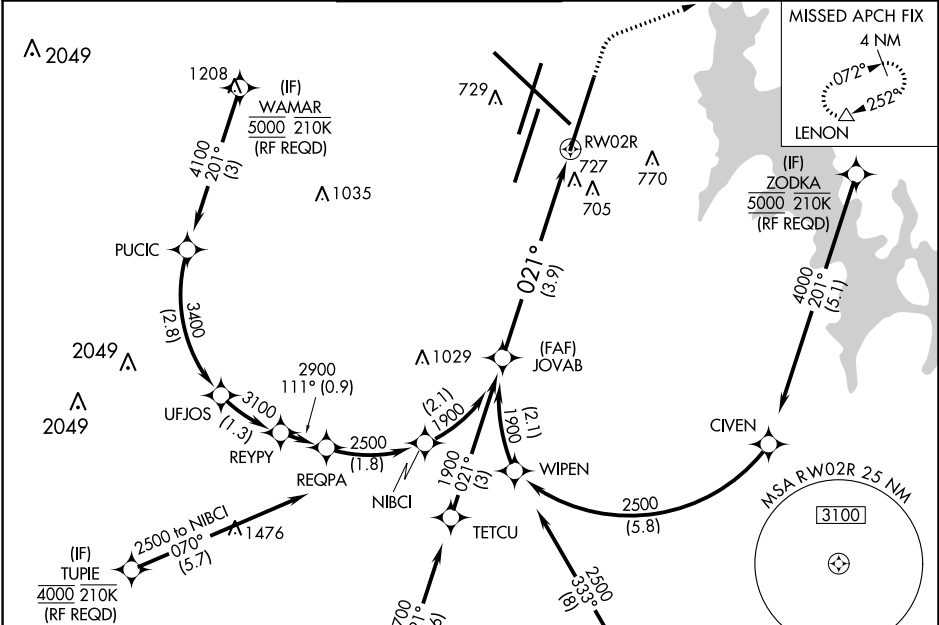
APP CRS	Rwy Idg	<b>8000</b>
<b>021°</b>	TDZE	<b>590</b>
	Apt Elev	<b>599</b>

RNP AR APCH.  
 ▽ For uncompensated Baro-VNAV systems, procedure NA below -11°C or above 54°C.  
 For inoperative ALSF-2, increase RNP 0.15 all Cats visibility to RVR 5600, RNP 0.30 all Cats visibility to 1 3/8 mile. Simultaneous approach authorized with Rwy 2L/C. Use of FD or AP providing RNAV track guidance required during simultaneous operations.

ALSF-2

MISSED APPROACH:  
 Climb to 1300 then climbing right turn to 4000 direct LENON and hold.

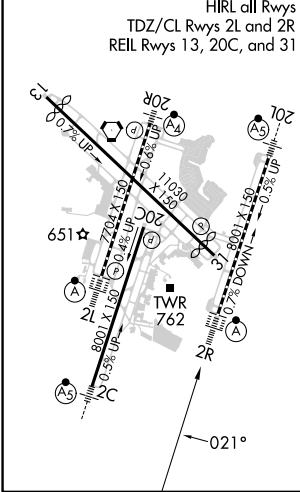
D-ATIS <b>135.1</b>	NASHVILLE APP CON <b>118.4 360.7</b>	NASHVILLE TOWER <b>118.6 257.8</b>	GND CON <b>121.9 348.6</b>	CLNC DEL <b>126.05</b>	CPDLC
------------------------	---	---------------------------------------	-------------------------------	---------------------------	-------



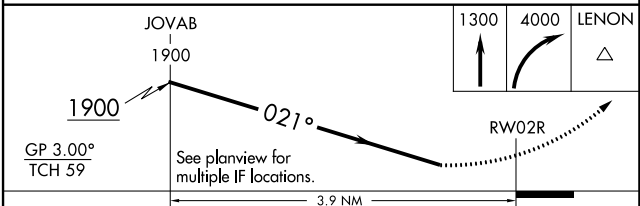
SE-1, 26 DEC 2024 to 23 JAN 2025

SE-1, 26 DEC 2024 to 23 JAN 2025

ELEV 599	<b>D</b>	TDZE 590
----------	----------	----------



Radar required for procedure entry at ATKNS.



CATEGORY	A	B	C	D
RNP 0.15 DA		938/40	348 (400-3/4)	
RNP 0.30 DA		1024/48	434 (500-1)	

### AUTHORIZATION REQUIRED