


WAAS CH 49013 W20D	APP CRS 201°	Rwy Idg 8000 TDZE 551 Apt Elev 599
--	------------------------	---

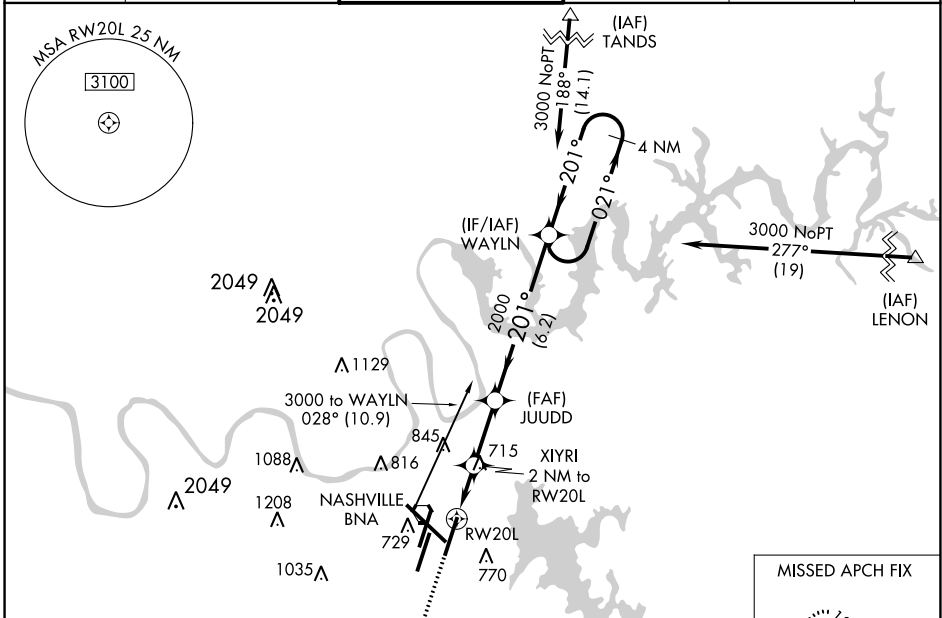
RNAV (GPS) Y RWY 20L

NASHVILLE INTL (BNA)

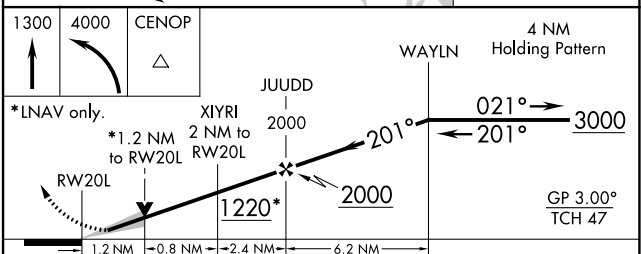
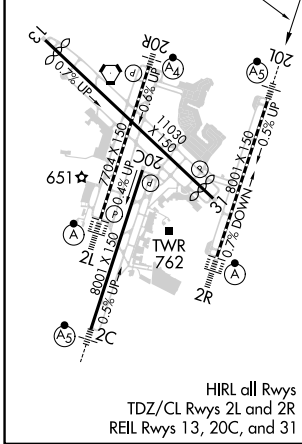
⚠ For uncompensated Baro-VNAV systems, procedure NA below -11°C (13°F) or above 54°C (130°F). DME/DME RNP-0.3 NA. Simultaneous approach authorized with Rwy 20R. LNAV procedure NA during simultaneous operations. Use of FD or AP providing RNAV track guidance required during simultaneous operations. For inop MALS/R, increase LNAV/VNAV all Cats visibility to 1%. ** RVR 1800 authorized with use of FD or AP or HUD to DA.

MALS/R

MISSED APPROACH:
Climb to 1300 then climbing left turn to 4000 direct CENOP and hold.

D-ATIS 135.1	NASHVILLE APP CON 118.4 360.7	NASHVILLE TOWER 118.6 257.8	GND CON 121.9 348.6	CLNC DEL 126.05	CPDLC
------------------------	---	---------------------------------------	-------------------------------	---------------------------	-------



ELEV 599	D	TDZE 551
----------	----------	----------



CATEGORY	A	B	C	D
LPV DA	** 751/24 200 (200-½)			
LNAV/VNAV DA	1025/58 474 (500-1¼)			
LNAV MDA	980/24	429 (400-½)	980/40	429 (400-¾)
C CIRCLING	1100-1 501 (600-1)	1120-1 521 (600-1)	1200-1¾ 601 (700-1¾)	1380-2½ 781 (800-2½)

SE-1, 26 DEC 2024 to 23 JAN 2025

SE-1, 26 DEC 2024 to 23 JAN 2025