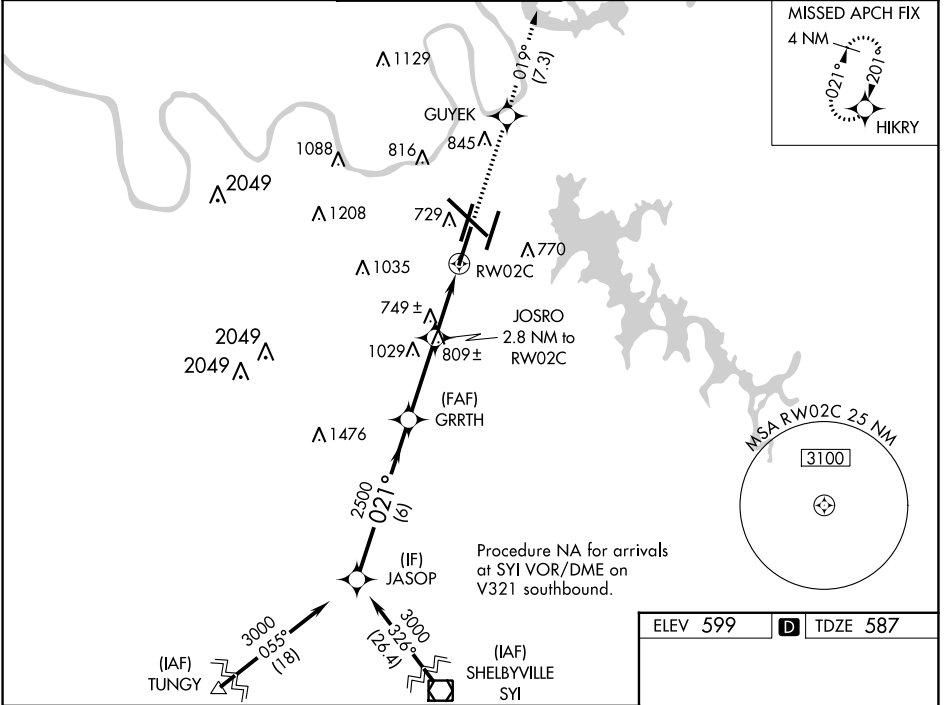


WAAS CH 70613 W02B	APP CRS 021°	Rwy Idg TDZE Apt Elev	7601 587 599
--	------------------------	-----------------------------	---

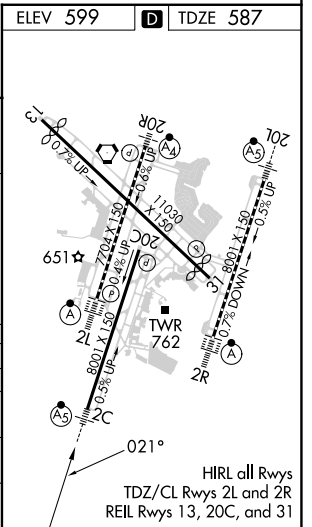
RNAV (GPS) Y RWY 2C

NASHVILLE INTL (BNA)

RNP APCH - GPS.		MALSR		MISSED APPROACH: Climb to 4000 direct GUYEK and on track 019° to HIKRY and hold, continue climb-in-hold to 4000.	
<p>▼ For uncompensated Baro-VNAV systems, LNAV/VNAV NA below -11°C or above 54°C. Use of FD or AP providing RNAV track guidance required during simultaneous operations. LNAV procedure NA during simultaneous operations. Simultaneous approach authorized with Rwy 2R.</p> <p>▲ ** RVR 1800 authorized with use of FD or AP or HUD to DA.</p>					
D-ATIS 135.1	NASHVILLE APP CON 118.4 360.7	NASHVILLE TOWER 118.6 257.8	GND CON 121.9 348.6	CLNC DEL 126.05	CPDLC



VGSI and RNAV glidepath not coincident.		4000	GUYEK	tr 019°	HIKRY
JASOP	GRRTH	JOSRO			
3000	2500	2.8 NM to RWY 2C	*1.2 NM to RWY 2C		*LNAV only
GP 3.00°	021°				
TCH 60	2500				
	6 NM	3.1 NM	1.6 NM	1.2 NM	
CATEGORY	A	B	C	D	
LPV DA**	787/24		200 (200-½)		
LNAV/VNAV DA	1059/60		472 (500-¼)		
LNAV MDA	1000/24	413 (500-½)	1000/40	413 (500-¾)	
CIRCLING	1100-1 501 (600-1)	1120-1 521 (600-1)	1200-1¾ 601 (700-1¾)	1380-2½ 781 (800-2½)	



SE-1, 26 DEC 2024 to 23 JAN 2025

SE-1, 26 DEC 2024 to 23 JAN 2025