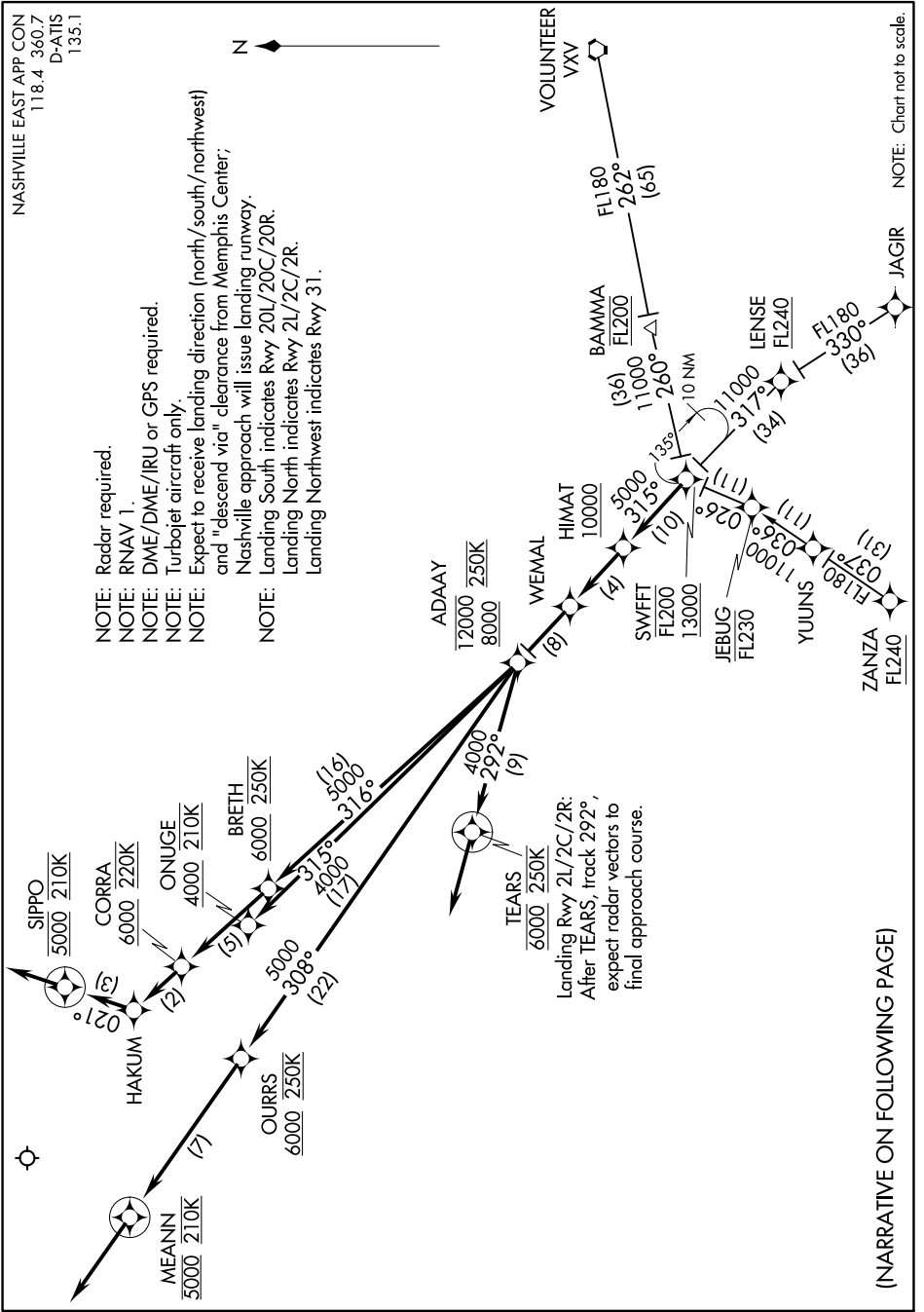


SWFFT TWO ARRIVAL (RNAV)

SE-1, 26 DEC 2024 to 23 JAN 2025



NOTE: Radar required.

NOTE: RNAV 1.

NOTE: DME/DME/IRU or GPS required.

NOTE: Turbojet aircraft only.

NOTE: Expect to receive landing direction (north/south/northwest) and "descend via" clearance from Memphis Center; Nashville approach will issue landing runway.

NOTE: Landing South indicates Rwy 20L/20C/20R.

NOTE: Landing North indicates Rwy 21L/21C/21R.

NOTE: Landing Northwest indicates Rwy 31.

Landing Rwy 21L/21C/21R:
After TEARS, track 292°,
expect radar vectors to
final approach course.

(NARRATIVE ON FOLLOWING PAGE)

NOTE: Chart not to scale.

SE-1, 26 DEC 2024 to 23 JAN 2025

SWFFT TWO ARRIVAL (RNAV)