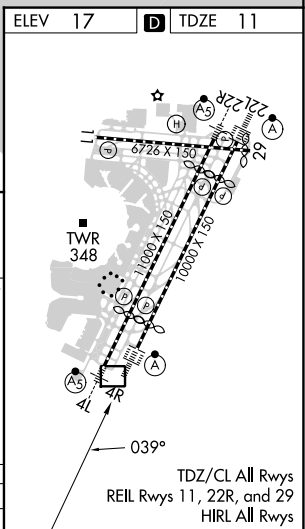
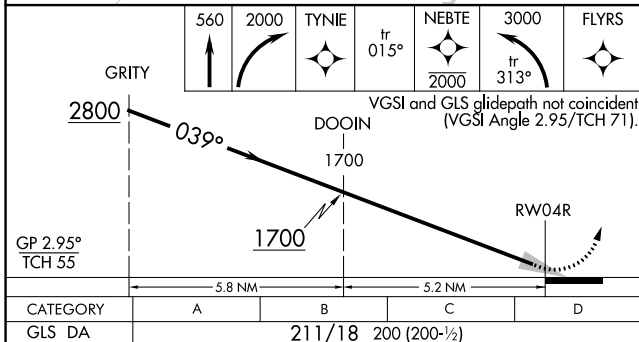
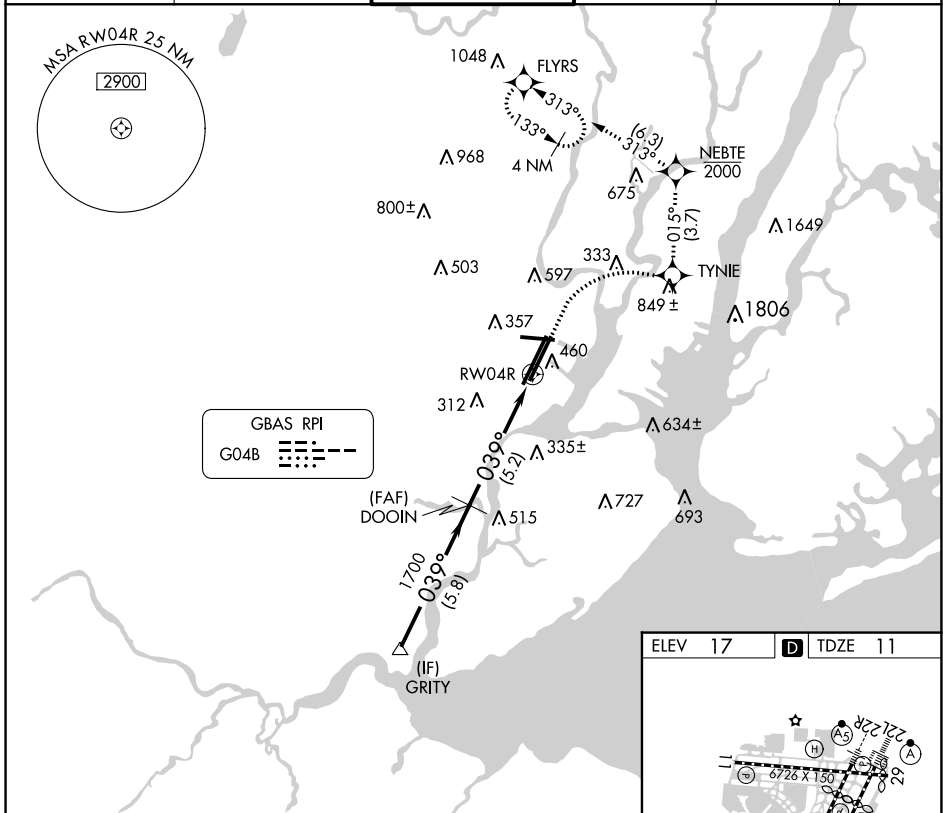


GBAS CH <b>21083</b> <b>G04B</b>	APP CRS <b>039°</b>	Rwy Idg <b>8810</b> TDZE <b>11</b> Apt Elev <b>17</b>
--	------------------------	---

# GLS RWY 4R

NEWARK LIBERTY INTL (EWR)

RNP APCH - GPS. RADAR required.		ALSF-2	MISSED APPROACH: (Do not exceed 210K until NEBTE) Climb to 560 then climbing right turn to 2000 direct TYNIE and on track 015° to NEBTE, cross NEBTE at or below 2000 then climbing left turn to 3000 on track 313° to FLYRS and hold, continue climb-in-hold to 3000.			
Autopilot coupled approach NA below 211.		(A)				
D-ATIS <b>115.7 134.825</b>	NEWARK APP CON <b>128.55 379.9</b>	NEWARK TOWER <b>118.3 257.6</b>	GND CON <b>121.8</b>	CLNC DEL <b>118.85</b>	CPDLC	



# GLS RWY 4R

NE-2, 26 DEC 2024 to 23 JAN 2025

NE-2, 26 DEC 2024 to 23 JAN 2025