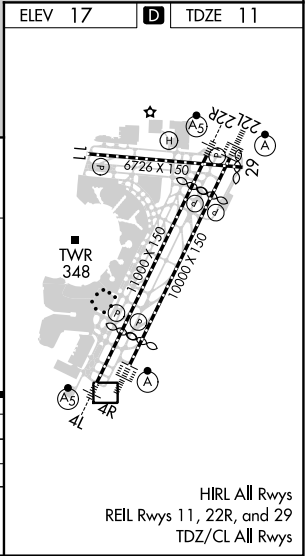
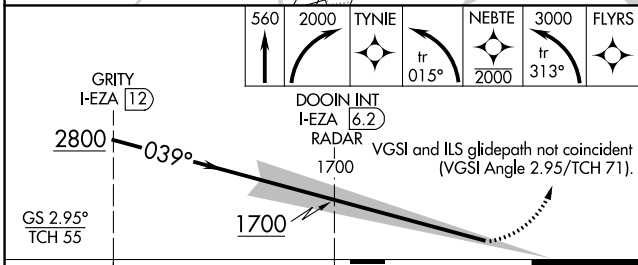
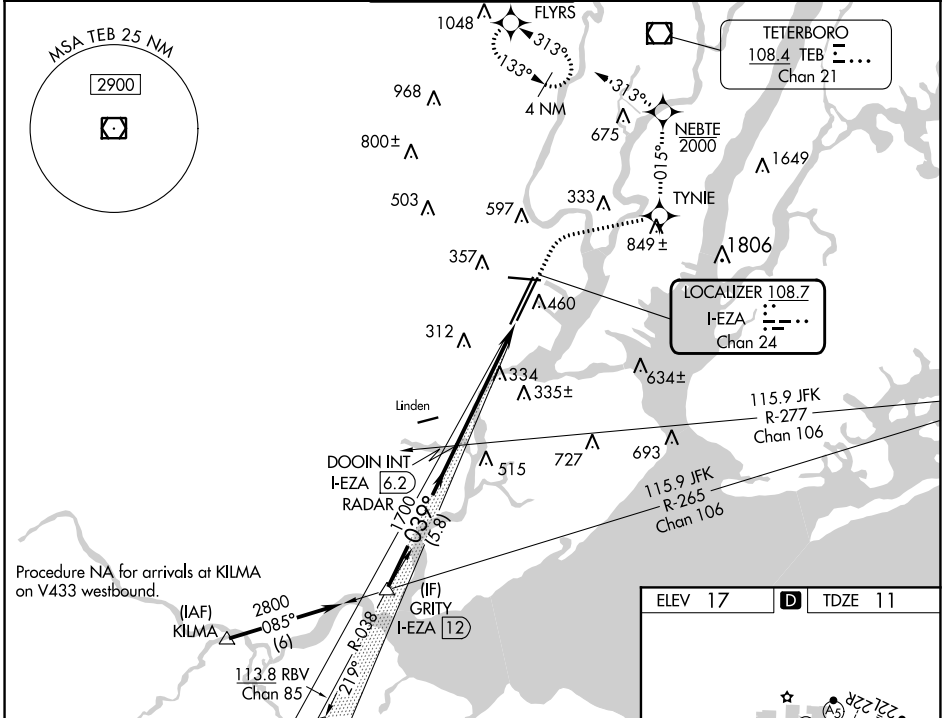


LOC/DME I-EZA <b>108.7</b> Chan <b>24</b>	APP CRS <b>039°</b>	Rwy Idg <b>8810</b> TDZE <b>11</b> Apt Elev <b>17</b>
---	------------------------	---

# ILS RWY 4R (CAT II & III)

NEWARK LIBERTY INTL (EWR)

RNP APCH - GPS. RADAR required.		ALSF-2 	MISSED APPROACH: (Do not exceed 210K until NEBTE) Climb to 560 then climbing right turn to 2000 direct TYNIE and left turn on track 015° to NEBTE, cross NEBTE at or below 2000 then climbing left turn to 3000 on track 313° to FLYRS and hold, continue climb-in-hold to 3000.			
D-ATIS <b>115.7 134.825</b>	NEWARK APP CON <b>128.55 379.9</b>		NEWARK TOWER <b>118.3 257.6</b>	GND CON <b>121.8</b>	CLNC DEL <b>118.85</b>	CPDLC



CATEGORY	A	B	C	D
S-ILS 4R	CAT II RA 100/12 100 DA 111			
S-ILS 4R	CAT III RVR 06			
<b>CATEGORY II &amp; III ILS - SPECIAL AIRCREW &amp; AIRCRAFT CERTIFICATION REQUIRED</b>				

NE-2, 26 DEC 2024 to 23 JAN 2025

NE-2, 26 DEC 2024 to 23 JAN 2025