

# PHLBO FOUR ARRIVAL (RNAV) Transition Routes

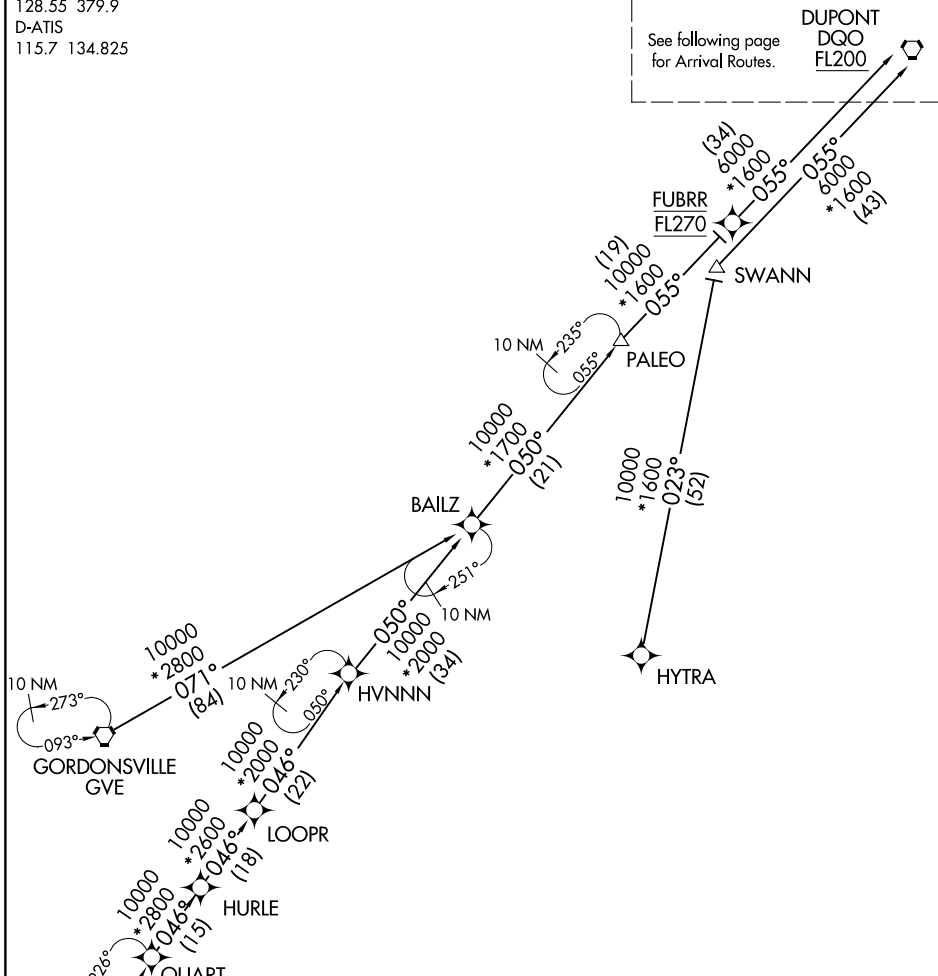
NEWARK LIBERTY INTL (EWR)  
NEWARK, NEW JERSEY

WASHINGTON CENTER  
132.52 307.25  
NEWARK APP CON  
128.55 379.9  
D-ATIS  
115.7 134.825

RNAV 1 - DME/DME/IRU or GPS.

RADAR required.

See following page for Arrival Routes.  
DUPONT  
DQO  
FL200



- NOTE: Jet aircraft only.
- NOTE: HYTRA Transition do not file - to be assigned by ATC.
- NOTE: Landing Rwy 4L/R & 29, approaching METRO expect RADAR vectors.
- NOTE: Landing Rwy 11 & 22L/R, approaching PHLBO expect RADAR vectors.

NOTE: Chart not to scale.

- GORDONSVILLE TRANSITION (GVE.PHLBO4)
- HYTRA TRANSITION (HYTRA.PHLBO4)
- QUART TRANSITION (QUART.PHLBO4)
- SWANN TRANSITION (SWANN.PHLBO4)

(CONTINUED ON FOLLOWING PAGE)

NE-2, 26 DEC 2024 to 23 JAN 2025

NE-2, 26 DEC 2024 to 23 JAN 2025

# PHLBO FOUR ARRIVAL (RNAV) Transition Routes

NEWARK, NEW JERSEY  
NEWARK LIBERTY INTL (EWR)