

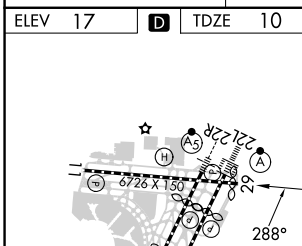
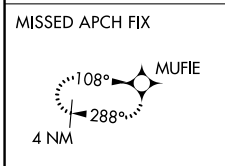
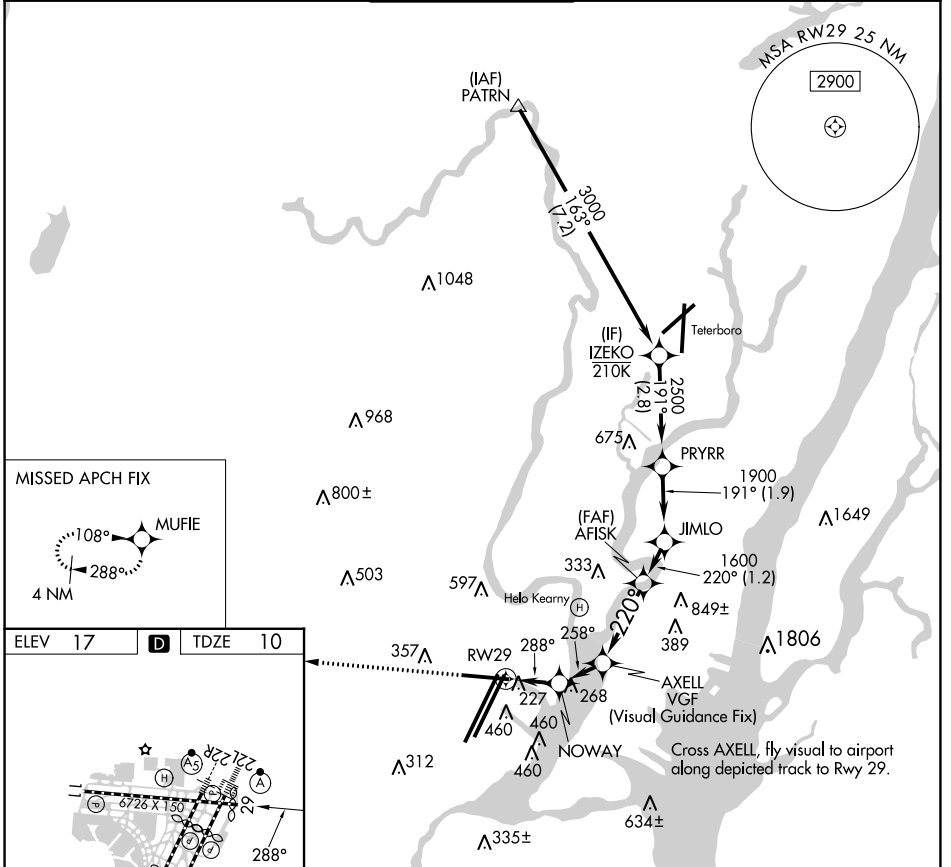
RNAV (GPS) W RWY 29

NEWARK LIBERTY INTL (EWR)

APP CRS	Rwy Idg	6502
288°	TDZE	10
	Apt Elev	17

RNP APCH - GPS.		MISSED APPROACH: (Do not exceed 165K until Rwy 29) Climb to 2000 on the extended visual approach track to Rwy 29, then climb to 3000 direct MUFIE and hold.
RADAR required.		
<p>▼ Rwy 29 helicopter visibility reduction below 1 SM NA. Straight-in Rwy 29 at night, operational VGSi required, remain at or above VGSi glidepath until threshold.</p>		

D-ATIS	NEWARK APP CON	NEWARK TOWER	GND CON	CLNC DEL	CPDLC
115.7 134.825	128.55 379.9	118.3 257.6	121.8	118.85	



2000	to RWY29	3000	MUFIE	Turns required in the visual segment.	IZEKO
↑		↑	✦	* Recommended ALT.	
CATEGORY		A		B	
LNAV		MDA		920-3	
				910 (1000-3)	

NE-2, 26 DEC 2024 to 23 JAN 2025

NE-2, 26 DEC 2024 to 23 JAN 2025