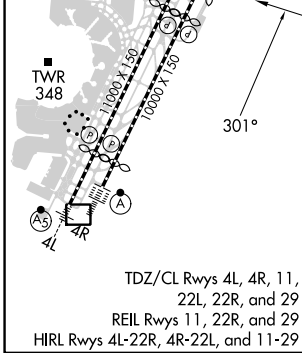
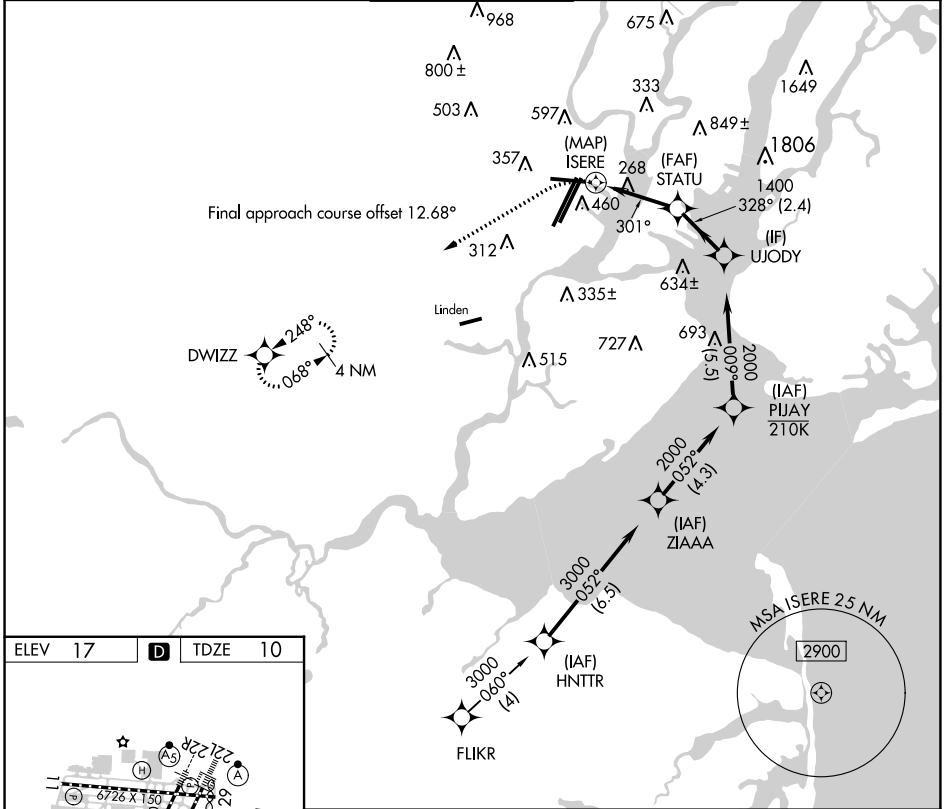


APP CRS	Rwy Idg	<b>6502</b>
<b>301°</b>	TDZE	<b>10</b>
	Apt Elev	<b>17</b>

# RNAV (GPS) X RWY 29

NEWARK LIBERTY INTL (EWR)

RNP APCH - GPS.			MISSED APPROACH: Climbing left turn to 2000 direct DWIZZ and hold.		
⚠ Rwy 29 helicopter visibility reduction below 1 SM NA. Straight-in Rwy 29 at night, and when Circling to Rwy 29 at night, operational VGSI required, remain on or above VGSI glidepath until threshold.					
D-ATIS	NEWARK APP CON	NEWARK TOWER	GND CON	CLNC DEL	CPDLC
<b>115.7 134.825</b>	<b>128.55 379.9</b>	<b>118.3 257.6</b>	<b>121.8</b>	<b>118.85</b>	



ELEV 17	<b>D</b>	TDZE 10		
TDZ/CL Rwy 4L, 4R, 11, 22L, 22R, and 29 REIL Rwy 11, 22R, and 29 HIRL Rwy 4L-22R, 4R-22L, and 11-29				
2000	DWIZZ	VGSI and descent angles not coincident (VGSI Angle 3.00/TCH 60).		
ISERE STATU UJODY 301° 328° 2000 1400 ≤ 3.50° TCH 60				
0.5 3.1 NM 2.4 NM				
CATEGORY	A	B	C	D
LNAV MDA	520-1	510 (600-1)	520-1 <sup>3</sup> / <sub>8</sub>	510 (600-1 <sup>3</sup> / <sub>8</sub> )
<input checked="" type="checkbox"/> CIRCLING	760-1 743 (800-1)	820-1 803 (900-1)	900-2 <sup>3</sup> / <sub>4</sub> 883 (900-2 <sup>3</sup> / <sub>4</sub> )	900-3 883 (900-3)

NE-2, 26 DEC 2024 to 23 JAN 2025

NE-2, 26 DEC 2024 to 23 JAN 2025