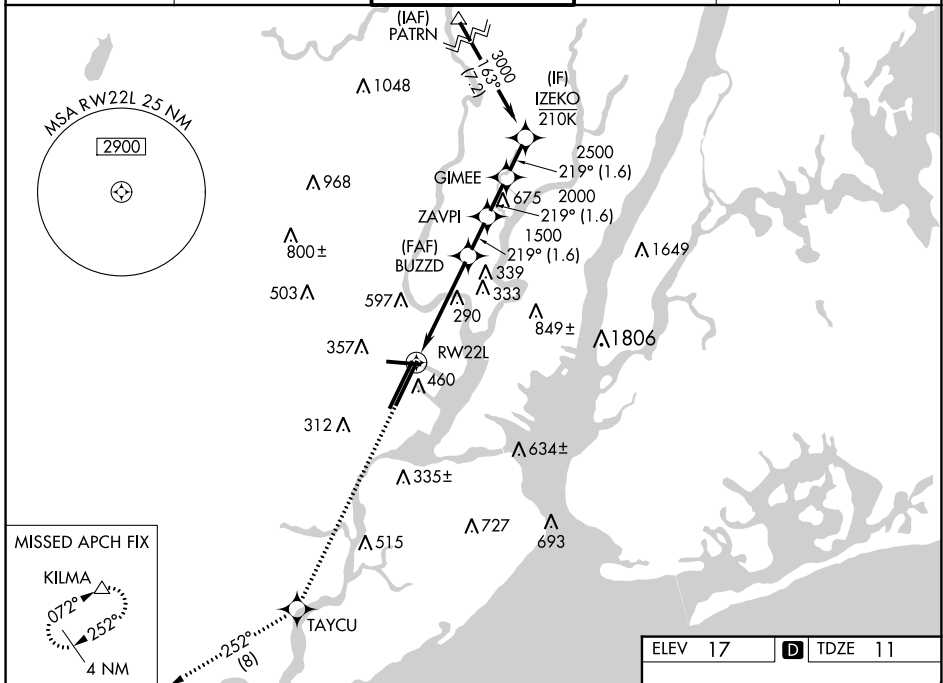


WAAS CH 70324 W22A	APP CRS 219°	Rwy Idg 8207 TDZE 11 Apt Elev 17
--	------------------------	---

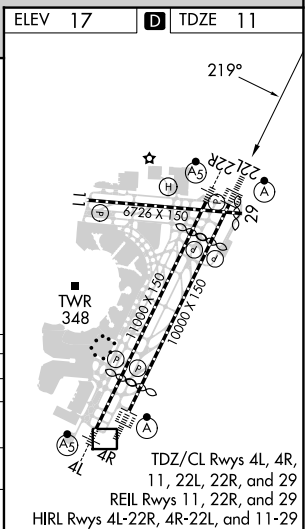
RNAV (GPS) Z RWY 22L

NEWARK LIBERTY INTL (EWR)

RNP APCH - GPS.		NEWARK TOWER 118.3 257.6		GND CON 121.8	CLNC DEL 118.85	CPDLC
<p>⚠ Circling NA south of Rwy 11-29. For uncompensated Baro-VNAV systems, LNAV/VNAV NA below -12°C or above 54°C. When Circling to Rwy 29 at night, operational VGSI required, remain on or above VGSI glidepath until threshold.</p>		ALSIF-2 		MISSED APPROACH: Climb to 3000 direct TAYCU and on track 252° to KILMA and hold.		



3000	TAYCU	tr 252°	KILMA	VGSI and RNAV glidepath not coincident (VGSI Angle 3.00/TCH 60).	
				<p>IZEKO GIMEE 219° 3000</p> <p>BUZZD ZAVPI 1500 2000</p> <p>1.5 NM to RW22L</p> <p>1500</p> <p>GP 3.00° TCH 43</p>	
1.5 NM		3 NM		1.6 NM	
1.5 NM		3 NM		1.6 NM	
CATEGORY	A		B		D
LPV DA	211/18		200 (200-½)		
LNAV/VNAV DA	462/45		451 (500-¾)		
LNAV MDA	560/24	549 (600-½)		560/60	549 (600-1¼)
CIRCLING	660-1	643 (700-1)		900-2¾ 883 (900-2¾)	900-3 883 (900-3)



NE-2, 26 DEC 2024 to 23 JAN 2025

NE-2, 26 DEC 2024 to 23 JAN 2025