

LOC I-POU <b>111.3</b>	APP CRS <b>063°</b>	Rwy Idg TDZE <b>156</b> Apt Elev <b>164</b>
---------------------------	------------------------	---

# ILS or LOC RWY 6

HUDSON VALLEY RGNL (POU)

DME required for LOC only.

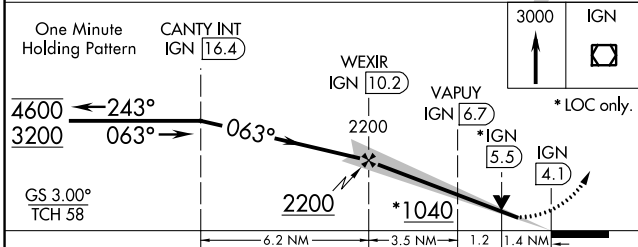
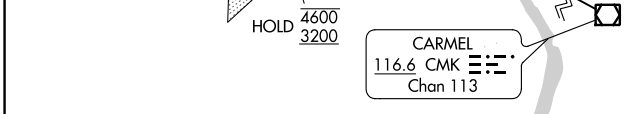
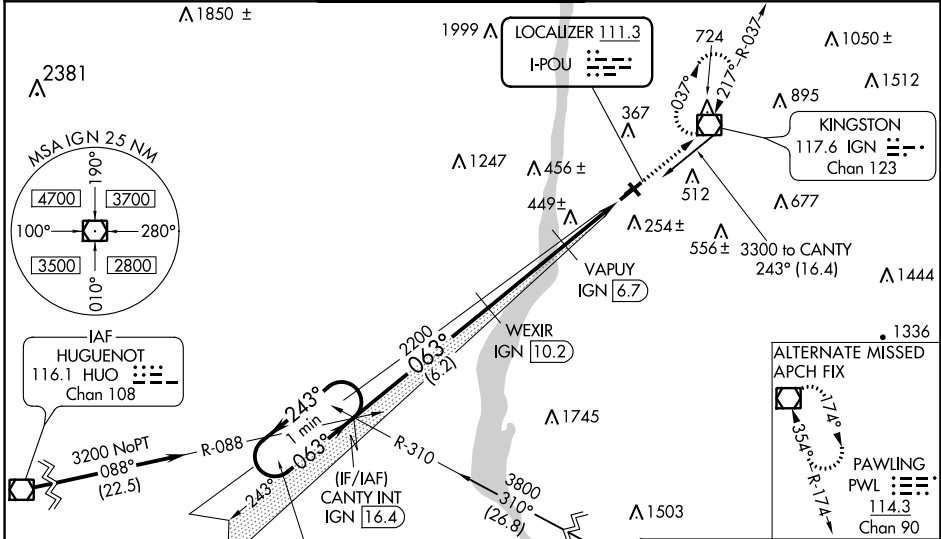
**⚠** Circling NA to Rwys 7 and 25. Circling Rwy 15, 33 NA at night. Rwy 6 helicopter visibility reduction below 3/4 SM NA. DME from IGN VOR/DME. Simultaneous reception of I-POU and IGN DME required. For inop ALS, increase S-LOC 6 Cats C/D visibility to 1 1/2 SM. When local altimeter setting not received, use Montgomery altimeter setting: increase S-ILS 6 DA to 556; increase all MDA 80 feet and S-LOC 6 and Circling Cats C/D visibility 1/4 SM. Inop table does not apply to S-ILS 6 all Cats and S-LOC 6 Cats A/B. For inop ALS when using Montgomery altimeter setting, increase S-ILS 6 all Cats visibility to 1 1/2 SM and S-LOC 6 Cats C/D visibility to 1 1/2 SM.

MALSR

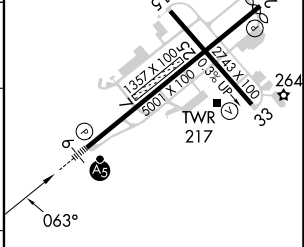


**MISSED APPROACH:**  
Climb to 3000 direct IGN VOR/DME and hold, continue climb-in-hold to 3000.

ATIS <b>126.75</b>	NEW YORK APP CON <b>132.75 363.1</b>	DUTCHESS COUNTY TOWER ★ <b>124.0 (CTAF) 269.15</b>	GND CON <b>121.8</b>	CLNC DEL <b>121.8</b>	UNICOM <b>122.95</b>
-----------------------	---	---	-------------------------	--------------------------	-------------------------



ELEV 164	<b>D</b> TDZE 156
----------	-------------------



CATEGORY	A	B	C	D
S-ILS 6		485-1	329 (400-1)	
S-LOC 6		640-1	484 (500-1)	
CIRCLING	760-1 596 (600-1)	840-1 676 (700-1)	940-2 1/4 776 (800-2 1/4)	1080-3 916 (1000-3)

MIRL Rwy 15-33  
HIRL Rwy 6-24  
REIL Rwy 24  
REIL Rwy 33

NE-2, 26 DEC 2024 to 23 JAN 2025

NE-2, 26 DEC 2024 to 23 JAN 2025