

WAAS CH 61302 W18A	APP CRS 177°	Rwy Idg 5510 TDZE 8 Apt Elev 8
--	------------------------	---

RNAV (GPS) RWY 18R

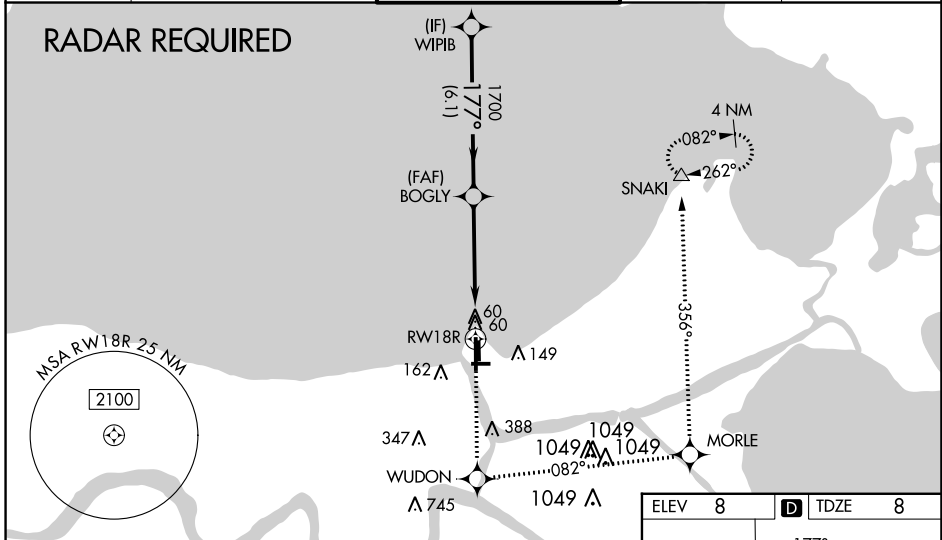
LAKEFRONT (NEW)

⚠ Inoperative table does not apply to LPV all Cats. For inoperative MALSR, increase LNAV Cat A and B visibility to 1 mile. Baro-VNAV NA when using Louis Armstrong New Orleans Intl altimeter setting. For uncompensated Baro-VNAV systems, LNAV/VNAV NA below -1.5°C (5°F) or above 49°C (120°F). DME/DME RNP-0.3 NA. Visibility reduction by helicopters NA. When local altimeter setting not received; use Louis Armstrong New Orleans Intl altimeter setting and increase all DA 29 feet and all MDA 40 feet; increase LNAV/VNAV all Cats and LNAV and Circling Cat C and D visibility ¼ mile. VDP NA with Louis Armstrong New Orleans Intl altimeter setting. For inoperative MALSR when using Louis Armstrong New Orleans Intl altimeter setting, increase LNAV Cat A and B visibility to 1 mile.

MALSR

MISSED APPROACH:
Climb to 2100 direct WUDON and left turn on track 082° to MORLE and on track 356° to SNAKI and hold.

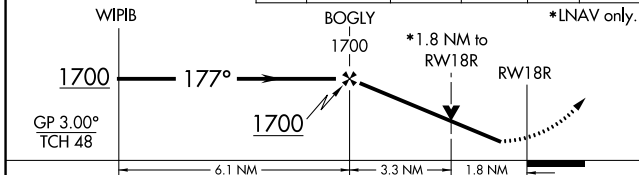
ATIS 124.9	NEW ORLEANS APP CON NORTH 133.15 290.3 SOUTH 123.85 256.9	LAKEFRONT TOWER * 118.95(CTAF) 0	GND CON 121.7 335.575	CLNC DEL 127.4
----------------------	---	---	---------------------------------	--------------------------



SC-4, 26 DEC 2024 to 23 JAN 2025

SC-4, 26 DEC 2024 to 23 JAN 2025

Procedure Turn NA	2100 ↑	WUDON ✦	tr 082° ↘	MORLE ✦	tr 356° ↘	SNAKI △
-------------------	--------	---------	-----------	---------	-----------	---------



CATEGORY	A	B	C	D
LPV DA		258-¾	250 (300-¾)	
LNAV/DA/VNAV		521-1¼	513 (600-1¼)	
LNAV MDA	640-¾	632 (700-¾)	640-1¼ 632 (700-1¼)	640-1½ 632 (700-1½)
CIRCLING	640-1	632 (700-1)	700-2 692 (700-2)	820-2¾ 812 (900-2¾)

ELEV 8	D TDZE 8
--------	----------