

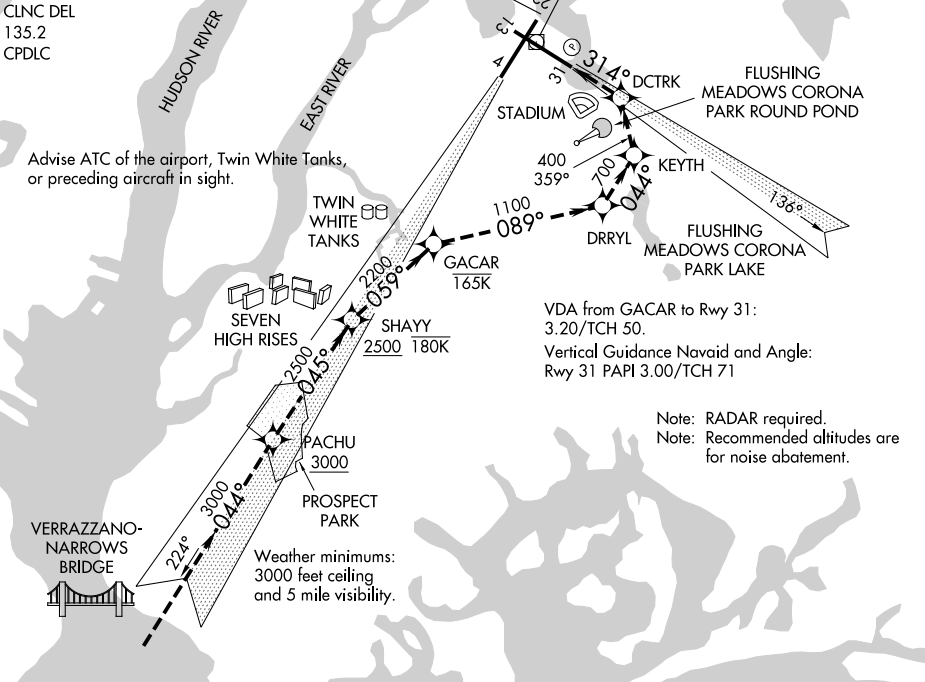
PARK VISUAL RWY 31

D-ATIS ARR 125.95
 D-ATIS DEP 127.05
 NEW YORK APP CON
 120.8 263.0
 LAGUARDIA TOWER
 118.7 263.0
 GND CON
 121.7 263.0
 CLNC DEL
 135.2
 CPDLC

Advise ATC of the airport, Twin White Tanks, or preceding aircraft in sight.

LOCALIZER 110.5
 H-LGA
 Chan 42

LOCALIZER 108.5
 I-PZV
 Chan 22
 LOC offset 1.71°



VDA from GACAR to Rwy 31:
 3.20/TCH 50.
 Vertical Guidance Navaid and Angle:
 Rwy 31 PAPI 3.00/TCH 71

Note: RADAR required.
 Note: Recommended altitudes are for noise abatement.

NE-2, 26 DEC 2024 to 23 JAN 2025

NE-2, 26 DEC 2024 to 23 JAN 2025

1 NM	2	3	4	5	6	7	8	9	10	11	12	13	14	15	16
------	---	---	---	---	---	---	---	---	----	----	----	----	----	----	----

When cleared for the PARK VISUAL RWY 31 aircraft may proceed via the RNAV (GPS) X RWY 31 approach to Rwy 31 and/or cross PACHU at 3000 or above and tracking 045° to SHAYY at or below 180K (Seven High Rises) at 2500 or above and turn right tracking 059° to GACAR at or below 165K (Twin White Tanks) then turn right tracking 089° to DRRYL (Flushing Meadows Corona Park Lake) then turn left tracking 044° to KEYTH (Flushing Meadows Corona Park Round Pond) then left turn tracking 359° to DCTRK (stadium) then left turn direct RWY 31.

PARK VISUAL RWY 31

40°47'N-73°52'W

NEW YORK, NEW YORK
LAGUARDIA (LGA)