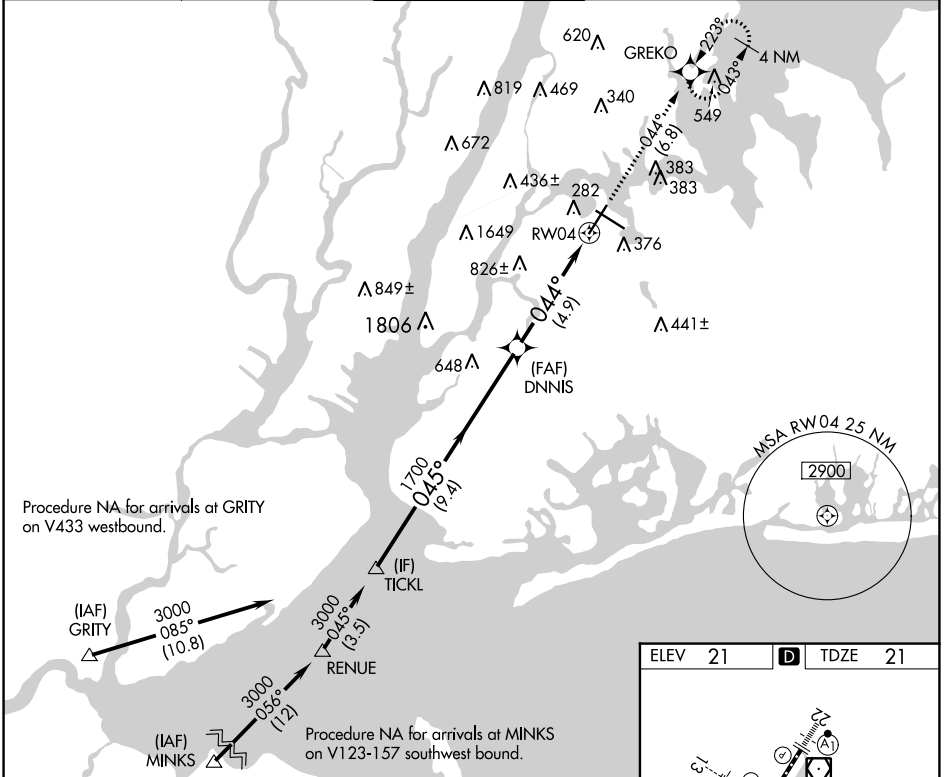


| | | |
|-------------|----------|-------------|
| APP CRS | Rwy Idg | 7002 |
| 044° | TDZE | 21 |
| | Apt Elev | 21 |

RNAV (RNP) Z RWY 4

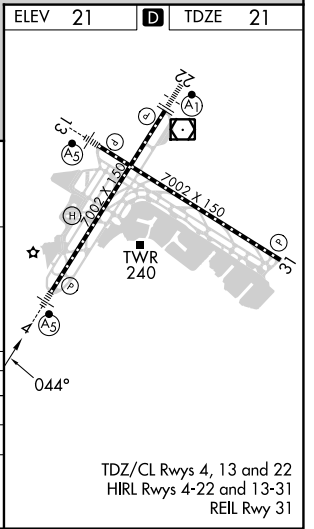
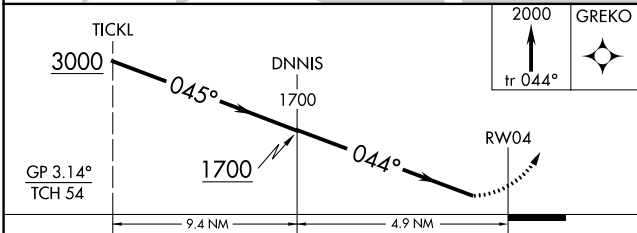
LAGUARDIA (LGA)

| | | | | | |
|---|---------------|------------------|--------------------|---|--------------------|
| RNP AR APCH - GPS. | | MALSR | | MISSED APPROACH: Climb to 2000 on track 044° to GREKO and hold, continue climb-in-hold to 2000. | |
| <p>▼ For uncompensated Baro-VNAV systems, procedure NA below -12°C or above 54°C. For inop ALS, increase RNP 0.18 visibility to 1 3/8 SM.</p> | | | | | |
| D-ATIS ARR | 125.95 | NEW YORK APP CON | 120.8 263.0 | LAGUARDIA TOWER | 118.7 263.0 |
| D-ATIS DEP | 127.05 | | | GND CON | 121.7 263.0 |
| | | | | CLNC DEL | 135.2 |
| | | | | CPDLC | |



NE-2, 26 DEC 2024 to 23 JAN 2025

NE-2, 26 DEC 2024 to 23 JAN 2025



| | | | | |
|-------------------------------|---|-----------|-----------------|---|
| CATEGORY | A | B | C | D |
| RNP 0.18 DA | | 482/50 | 461 (500-1) | |
| RNP 0.30 DA | | 610-1 1/4 | 589 (600-1 1/4) | |
| AUTHORIZATION REQUIRED | | | | |