

# KISRR THREE DEPARTURE

ATIS 127.15  
CLNC DEL  
118.5  
GND CON  
121.9  
NORFOLK TOWER  
120.8 257.8  
NORFOLK DEP CON  
125.2 363.125 379.1

**TOP ALTITUDE:  
4000**

SALISBURY  
111.2 SBY  
Chan 49

SNOW HILL  
112.4 SWL  
Chan 71

FLAT ROCK  
113.3 FAK  
Chan 80

HARCUM  
108.8 HCM  
Chan 25

DUNFE

HOPEWELL  
114.35 HPW  
Chan 90 (Y)

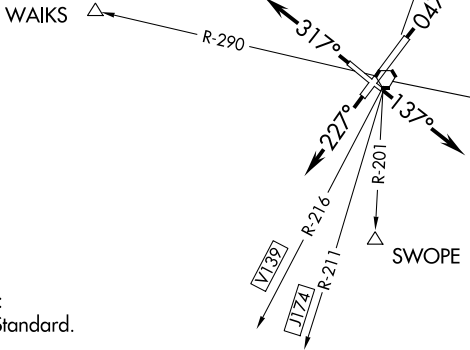
CAPE CHARLES  
112.2 CCV  
Chan 59

SCHOL

WAIKS

NORFOLK  
116.9 ORF  
Chan 116

SWOPE



**TAKEOFF MINIMUMS:**  
Rwys 5, 14, 23, 32: Standard.

NOTE: RADAR required.  
NOTE: Chart not to scale.

## DEPARTURE ROUTE DESCRIPTION

- TAKEOFF RWY 5:** Climb heading 047°. Expect radar vectors to assigned departure route/fix. Thence . . .
  - TAKEOFF RWY 14:** Climb heading 137°. Expect radar vectors to assigned departure route/fix. Thence . . .
  - TAKEOFF RWY 23:** Climb heading 227°. Expect radar vectors to assigned departure route/fix. Thence . . .
  - TAKEOFF RWY 32:** Climb heading 317°. Expect radar vectors to assigned departure route/fix. Thence . . .
- . . . maintain 4000 feet, expect clearance to requested altitude 10 minutes after departure.