

RIVER VISUAL RWY 5

AL-291 (FAA)

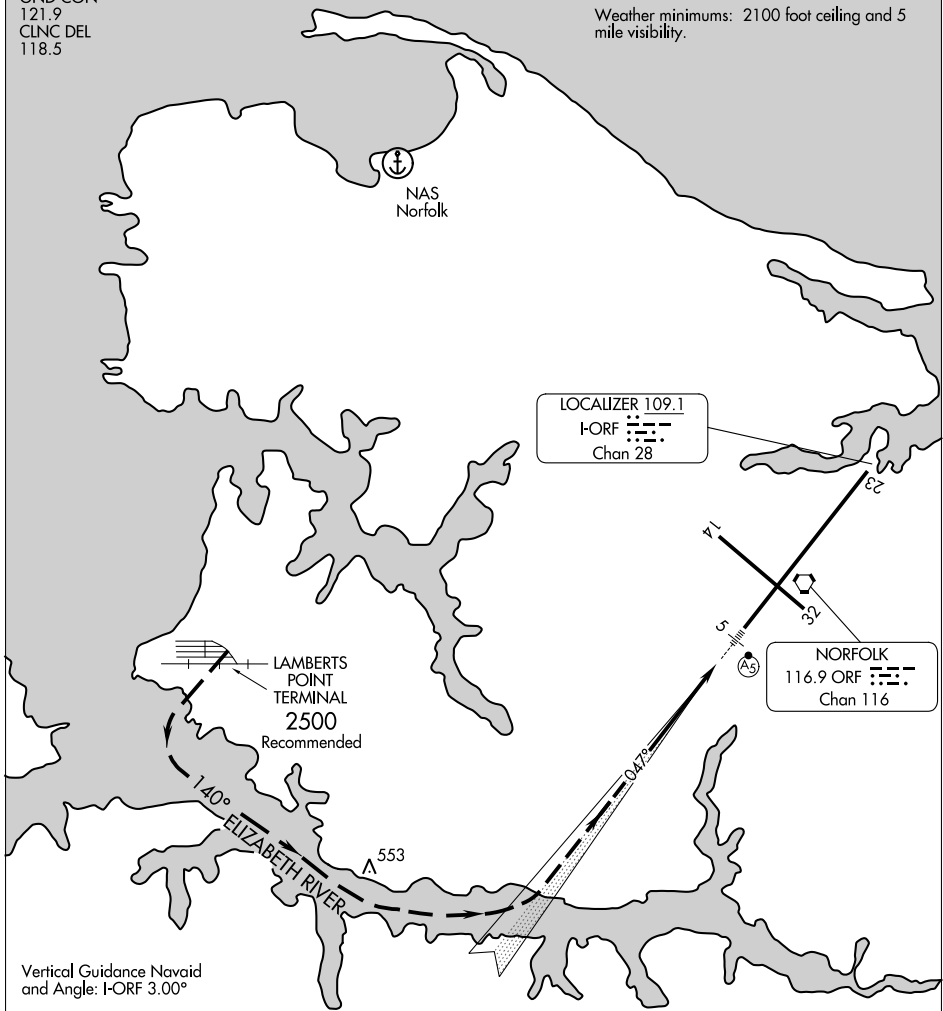
NORFOLK INTL (ORF)
NORFOLK, VIRGINIA

ATIS 127.15
NORFOLK APP CON
118.9 353.7
NORFOLK TOWER
120.8 257.8
GND CON
121.9
CLNC DEL
118.5

Procedure not authorized at night.

RADAR REQUIRED

Weather minimums: 2100 foot ceiling and 5 mile visibility.



NE-3, 26 DEC 2024 to 23 JAN 2025

NE-3, 26 DEC 2024 to 23 JAN 2025

Vertical Guidance Navaid
and Angle: I-ORF 3.00°

1 NM	2	3	4	5	6
------	---	---	---	---	---



RIVER VISUAL RWY 5

RADAR vectors will be provided to the Lambert's Point Terminal. Proceed visually along the Elizabeth River to the extended centerline of Rwy 5. The I-ORF and MALS are available for supplemental guidance.

RIVER VISUAL RWY 5

36°54'N-76°12'W

NORFOLK, VIRGINIA
NORFOLK INTL (ORF)