

|             |          |             |
|-------------|----------|-------------|
| APP CRS     | Rwy Idg  | <b>8995</b> |
| <b>227°</b> | TDZE     | <b>26</b>   |
|             | Apt Elev | <b>27</b>   |

# RNAV (RNP) Y RWY 23

NORFOLK INTL (ORF)

**▼** For uncompensated Baro-VNAV systems, procedure NA below -9°C (16°F) or above 54°C (130°F). GPS required. For inop ALS, increase RNP 0.10 DA visibility all Cats to 1½ SM, increase RNP 0.30 DA visibility all Cats to 1¾ SM.

**MALS**  
  
**MISSED APPROACH:** Climb to 2000 on track 227° to CALEY and hold.

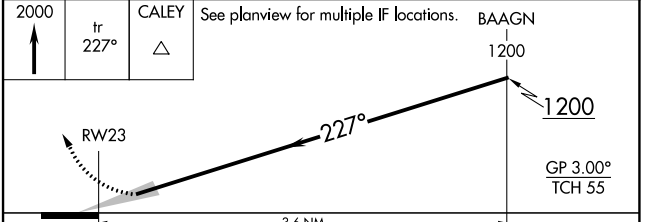
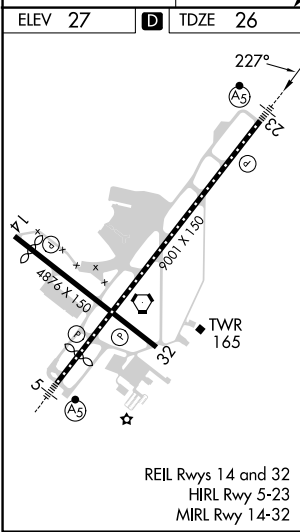
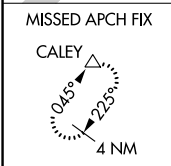
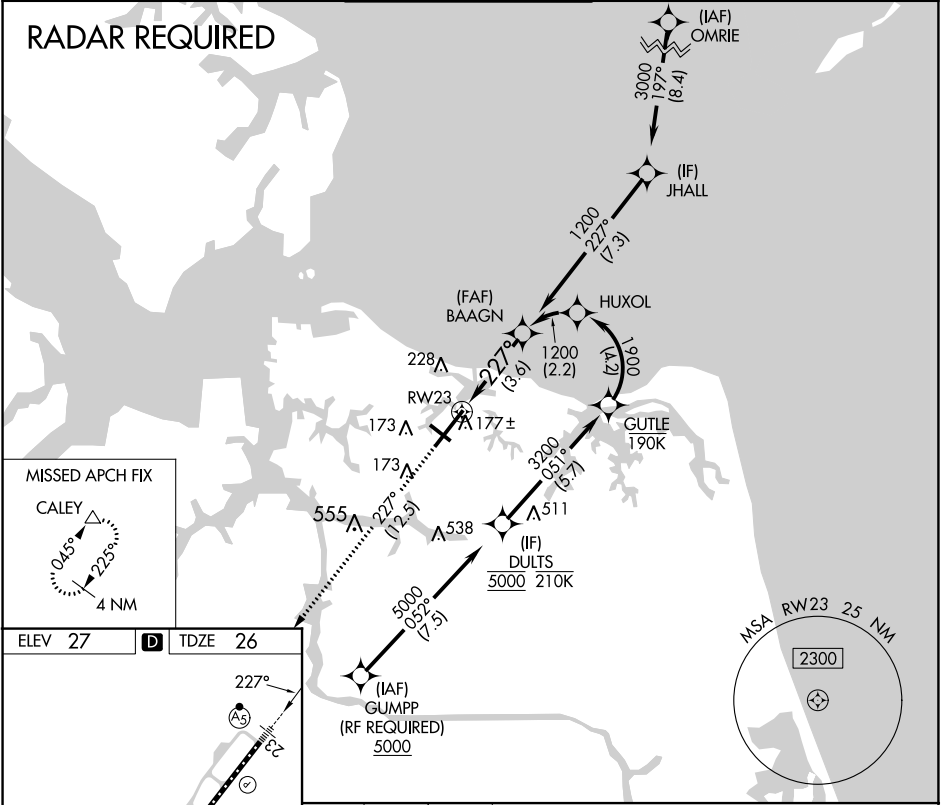
ATIS  
**127.15**

NORFOLK APP CON  
**118.9 353.7**

NORFOLK TOWER  
**120.8 257.8**

GND CON  
**121.9**

CLNC DEL  
**118.5**



| CATEGORY    | A | B     | C           | D |
|-------------|---|-------|-------------|---|
| RNP 0.10 DA |   | 432-¾ | 406 (500-¾) |   |
| RNP 0.30 DA |   | 491-1 | 465 (500-1) |   |

## AUTHORIZATION REQUIRED