

VORTAC ORF 116.9 Chan 116	APP CRS 326°	Rwy Idg TDZE 25 Apt Elev 26	3901
--	------------------------	---	-------------

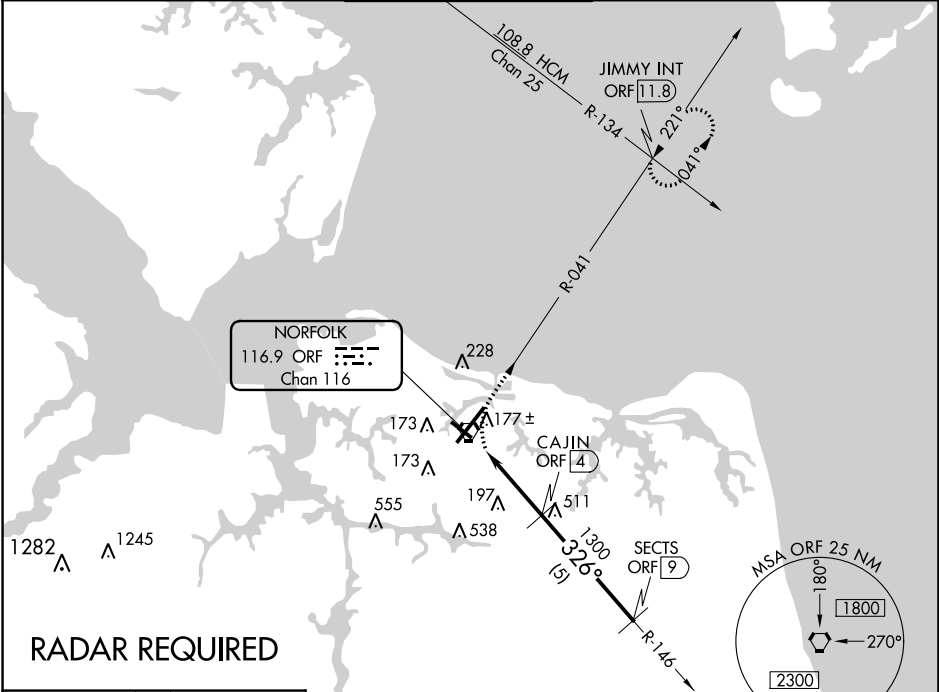
VOR/DME RWY 32

NORFOLK INTL (ORF)

⚠ Visibility reduction by helicopters NA.

MISSED APPROACH: Climbing right turn to 2000 via ORF R-041 to JIMMY Int/11.8 DME and hold.

ATIS 127.15	NORFOLK APP CON 118.9 353.7	NORFOLK TOWER 120.8 257.8	GND CON 121.9	CLNC DEL 118.5
-----------------------	---------------------------------------	-------------------------------------	-------------------------	--------------------------



NE-3, 26 DEC 2024 to 23 JAN 2025

NE-3, 26 DEC 2024 to 23 JAN 2025

RADAR REQUIRED

