

HI-TACAN RWY 25

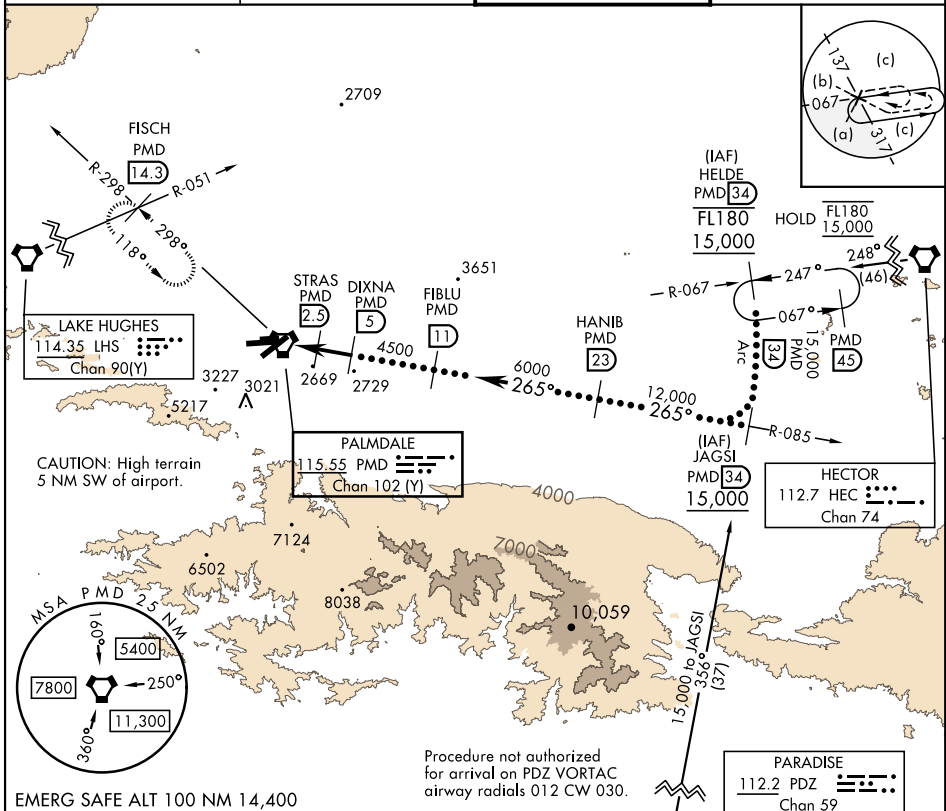
TACAN PMD Chan 102 (Y)	APCH CRS 265°	Rwy Idg TDZE Arprt Elev 12,000 2503 2543
----------------------------------	-------------------------	--

AL-310 [USAF]

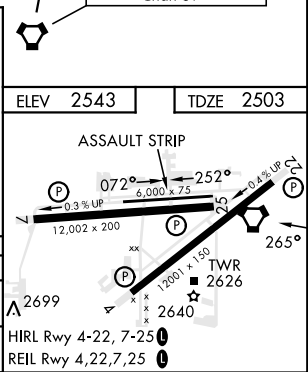
PALMDALE USAF PLANT 42 (KPMD)

▽ * Circling NA S of Rwy 4 and 25.
▲ MISSED APPROACH: Climb to 3000 then climbing right turn to 6700 on heading 318° on PMD VORTAC R-298 to FISCH INT/PMD 14.3 DME/RADAR and hold, continue climb-in-hold to 6700.

ATIS 118.275	JOSHUA APP CON 124.55 363.0	TOWER★ 123.7 (CTAF) 0 317.6	GND CON 121.9 317.6
------------------------	---------------------------------------	---------------------------------------	-------------------------------



3000	6700	VGS1 and descent angles not coincident.	
↑		Hdg 318°	
VORTAC	STRAS 2.5	DIXNA 5	HANIB 23
EKOTY 0.3	3500	4500	6000
0.8	2.2 NM	2.5 NM	
JAGSI R-085	HELDE R-067	FL180 15,000	
12,000	15,000	Arc 34	
TCH 58		3.00°	
CATEGORY	C	D	E
S-25	2840-1	337 (400-1)	
CIRCLING*	3140-1½ 597 (600-1½)	3740-3 1197 (1200-3)	3760-3 1217 (1300-3)



HI-TACAN RWY 25

SW-3, 26 DEC 2024 to 23 JAN 2025

SW-3, 26 DEC 2024 to 23 JAN 2025